

TRIAL OF CSO WARNING LIGHTS

1. Introduction

- 1.1. The PLA and the Tideway Tunnel Project team invite you to share your feedback on this trial (see [Proposal](#)) and in particular your views on the location and visibility of lights for river users.
- 1.2. This consultation and trial affect the following areas:
 - A. [Chelsea Embankment Foreshore](#)
 - B. [Victoria Embankment Foreshore](#)
 - C. [Heathwall Pumping Station](#)
 - D. [Albert Embankment Foreshore](#)

2. The Consultation Process

Affected Parties

- 2.1. This consultation is directed towards river users who frequently or occasionally navigate in or near the areas described in 1.2.

Consultation Duration

- 2.2. This consultation **opens on 20th March 2025** and will last for 30 days including the trial period. It will **close on 19th April 2025** at 23:59.

Conclusion

- 2.3. The information you submit will be made available to other parties and responses to this consultation are anonymous.
- 2.4. We appreciate all responses to our consultations however, as responses to this consultation are anonymous, we are unable to respond directly to respondents. We will issue a Consultation Statement once responses have been reviewed.

Issue Date:
20/08/2022

Port of London Authority
London River House, Royal Pier Road,
Gravesend, Kent DA12 2BG

LYDIA HUTCHINSON
Marine Manager

CLOSING DATE: 19/04/2025

TO RECEIVE FUTURE CONSULTATIONS BY **E-MAIL**,
PLEASE REGISTER VIA OUR WEBSITE pla.co.uk/Subscription-to-Newsletter



View all Active Public
Consultations using the above QR
Code

3. Responses to this Consultation

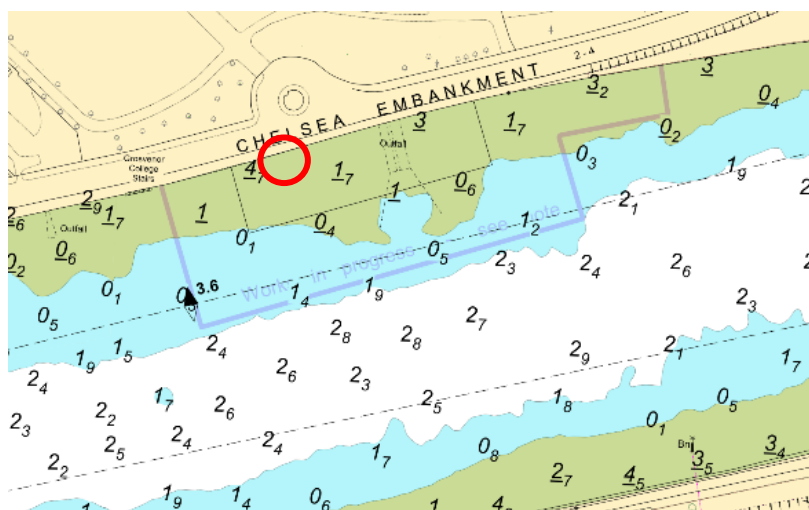
- 3.1. Responses to the consultation should be sent so that they are received no later than the closing date detailed in 2.2.
- 3.2. Unlike previous navigational consultations from the PLA, responses to this consultation may only be submitted by using the [online form](#). We regret that we cannot accept responses in any other format.
- 3.3. To access the form, follow the link or scan the QR code below. Please note that this form will only accept responses during the time period described in 2.2 [Consultation Duration](#).



4. Proposal

- 4.1. Mariners are advised that for a **period of five days from 20th- 24th March 2025** the Tideway Tunnel Project team will be trialling Combined Sewer Outfall (CSO) warning lights at their sites at Chelsea Embankment, Albert Embankment, Heathwall Pumping Station and Victoria Embankment Foreshore.
- 4.2. These warning lights will be used to indicate to mariners when a CSO is discharging. **This is a trial only** and these lights do not currently indicate an active CSO discharging. Separate NTMs will be published for each site once it comes online.
- 4.3. Mariners should note that the trial light at Chelsea Embankment will be in addition to the operational light described in [NTM 23-25](#), which should be followed.
- 4.4. The approximate location of the trial lights on each site is shown on the following chartlets.

Chelsea Embankment Foreshore

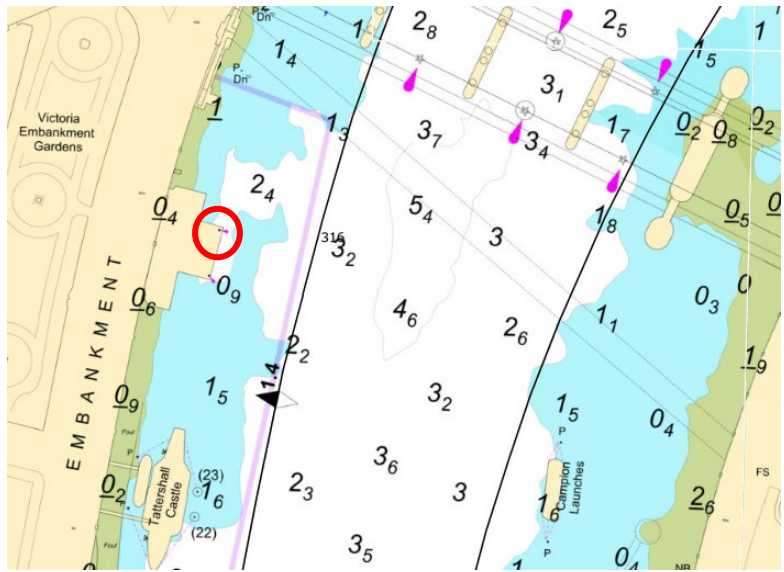


**CLOSING
DATE: 19/04/2025**

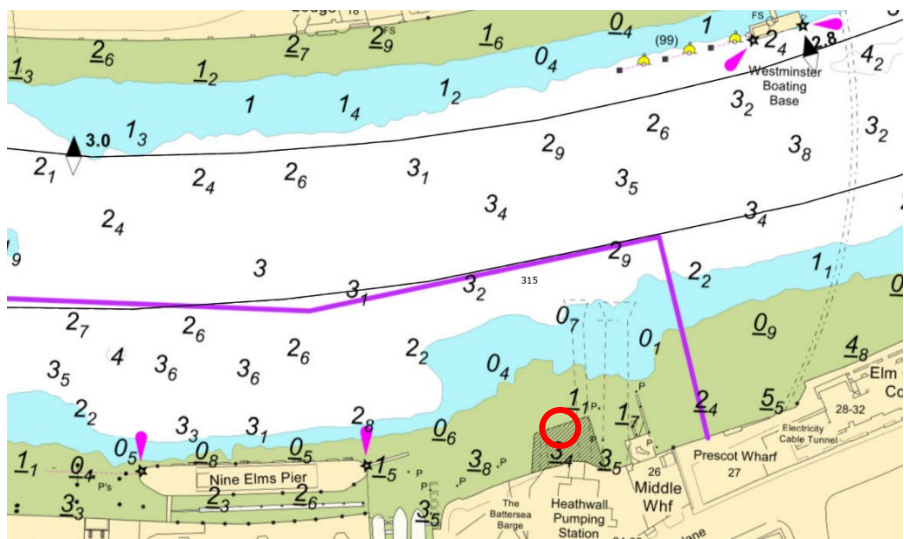
Port of London Authority
London River House, Royal Pier Road,
Gravesend, Kent DA12 2BG

**LYDIA HUTCHINSON
Marine Manager**

Victoria Embankment Foreshore



Heathwall Pumping Station

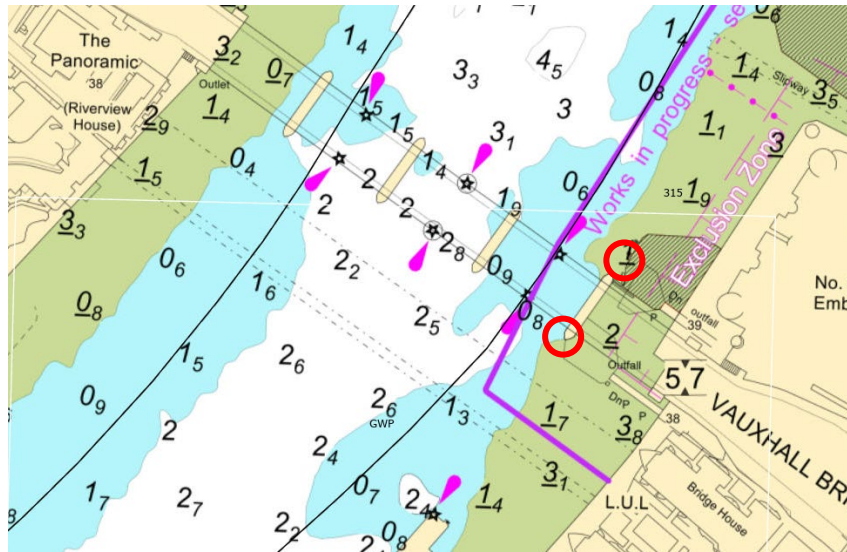


CLOSING
DATE:19/04/2025

Port of London Authority
London River House, Royal Pier Road,
Gravesend, Kent DA12 2BG

LYDIA HUTCHINSON
Marine Manager

Albert Embankment Foreshore



- 4.5. The lights will be mounted on masts at each site and will display two vertical yellow lights alternately flashing ½ second over a 1 second period. Albert site will also have a repeater light located on Vauxhall Bridge facing upriver between arches 4 &5, as shown on the chartlet above.