

U28-25

Michael Spice, Deputy Harbour Master

Published: 05/09/2025

Expires: 22/09/2025

Greenwich Reach to Cross Deep



Greenwich Reach to Cross Deep - Great River Race 2025

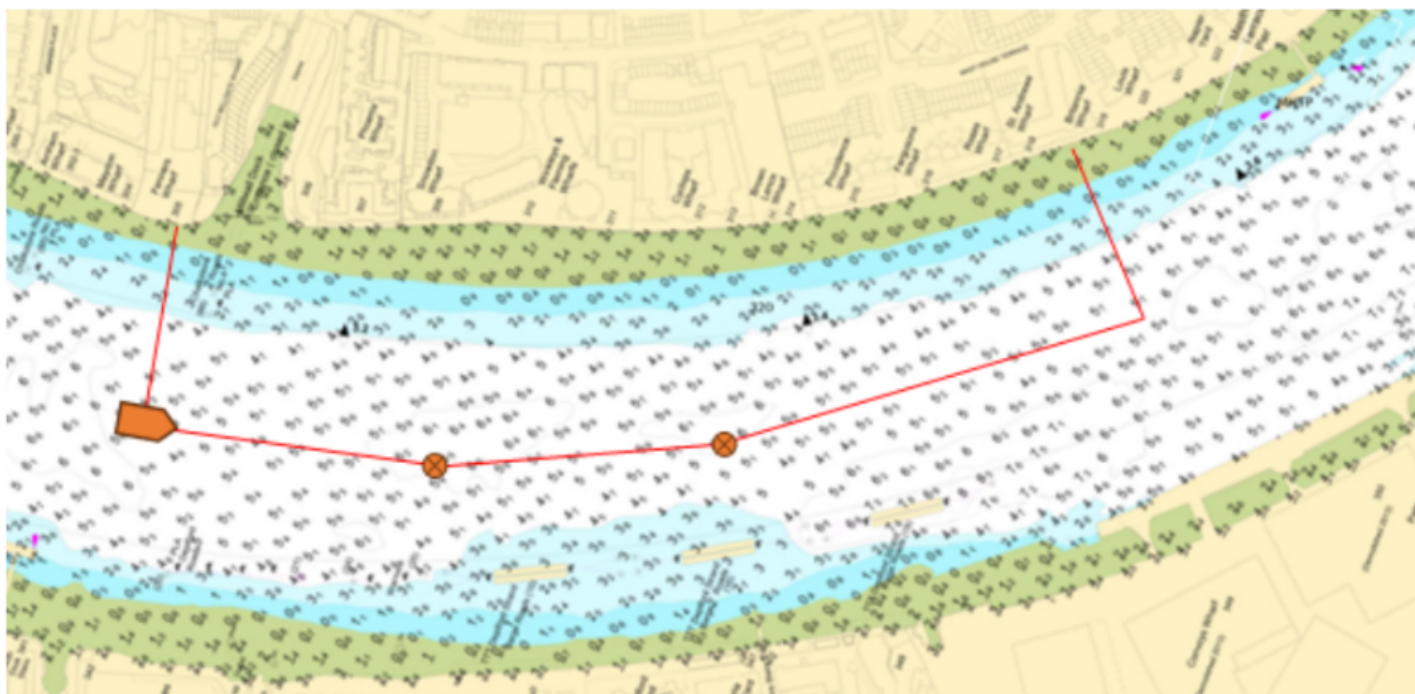
NOTICE TO MARINERS

Greenwich Reach to Cross Deep - Great River Race 2025

The annual event of Great River Race will take place of **SATURDAY 20th SEPTEMBER 2025**.

Commencing from **Masthouse Terrace Pier, Greenwich Reach** at 10:15, competitors will navigate inbound for **Hams, Richmond** for a 17:15 completion. To safely facilitate the race, **Local Traffic Control, Pier Closures and River Closures** will be implemented as detailed below.

RACE START



Telephone calls, VHF radio traffic, CCTV and radar traffic images may be recorded in the VTS Centre

Port of London Authority
London River House, Royal Pier Road,
Gravesend, Kent DA12 2BG

This Notice may be amended or withdrawn at any time. To check the validity of this notice, scan the QR code or visit pla.co.uk/notices



U28-25

Michael Spice, Deputy Harbour Master

Published: 05/09/2025

Expires: 22/09/2025

Greenwich Reach to Cross Deep



Greenwich Reach to Cross Deep - Great River Race 2025

NOTICE TO MARINERS

Competitors will be taking to the water from an assembled pontoon at Millwall Dock commencing at 09:15. A large number of vessels will congregate within the start area, between Masthouse Terrace Pier and the start line in vicinity of Chalkstone Moorings. The approximate area as illustrated in the chartlet above by the red lines to the north embankment is designated as a **Sterile Zone**, to which only event persons, vessels or activities are permitted. The southern limit will be marked by a Thames Sailing Barge and inflatable buoys.

Local Traffic Control will be in force at the start area from 08:45 until 11:15 by an attending PLA Harbour Service Launch, exhibiting a blue flashing light. All vessels navigating between Masthouse Terrace Pier and Chalkstones moorings at this time are to pay particular attention to this event and maintain a continuous watch on VHF Channel 14, following any instructions from the attending Harbour Service Launch; call sign prefix '**THAMES PATROL**'.

A **Pier Closure** will be implemented at **Canary Wharf Pier** from 10:15 to approximately 11:25 to aid a safe start to the race.

A **Lock Closure** will be implemented at **Limehouse Marina** from 10:20 to approximately 11:30.

THE RACE

Competitors have been instructed to remain on the starboard side of the channel throughout the race. Competitor vessels are not to overtake one another under bridge arches. Marshalling, safety vessels and PLA Harbour Service Launches will accompany the race.

An attending PLA Harbour Service Launch will accompany the lead competitors, who are expected to be in the vicinity of Tower Bridge from 10:35.

A **Lock Closure** will be implemented at **St. Katherine's Haven** from 10:35 to approximately 11:35.

Pier Closures will be implemented, in order to improve competitor safety. Those piers on the northern side of the river Thames, **will be closed to navigation** upon the approach of the first competitors, the expected timings are indicated below:

Location	Adjusted Time
Canary Wharf Pier	10:15
Limehouse Marina Entrance	10:20

Telephone calls, VHF radio traffic, CCTV and radar traffic images may be recorded in the VTS Centre



U28-25

Michael Spice, Deputy Harbour Master

Published: 05/09/2025

Expires: 22/09/2025

Greenwich Reach to Cross Deep



Greenwich Reach to Cross Deep - Great River Race 2025

NOTICE TO MARINERS

Location	Adjusted Time
St Katherine's Haven Entrance	10:35
Tower Bridge Quay	10:35
Tower Pier	10:40
Blackfriars Pier	10:40
Crown Pier	10:55
Temple Pier	11:00
Woods Quay	11:05
Embankment Pier	11:05
Westminster Pier	11:10
Millbank Pier	11:20
Cadogan Pier	11:35
Chelsea Harbour Pier	11:50

Piers will remain closed until the final competitor has passed, which is anticipated to be approximately 1 hour from the times indicated above, piers will be opened by an attending PLA Harbour Service Launch.

Masters of all vessels are to navigate with due care and attention, following any instructions from the Harbour Service Launches on **VHF Channel 14**.

RACE FINISH

Telephone calls, VHF radio traffic, CCTV and radar traffic images may be recorded in the VTS Centre



Greenwich Reach to Cross Deep - Great River Race 2025

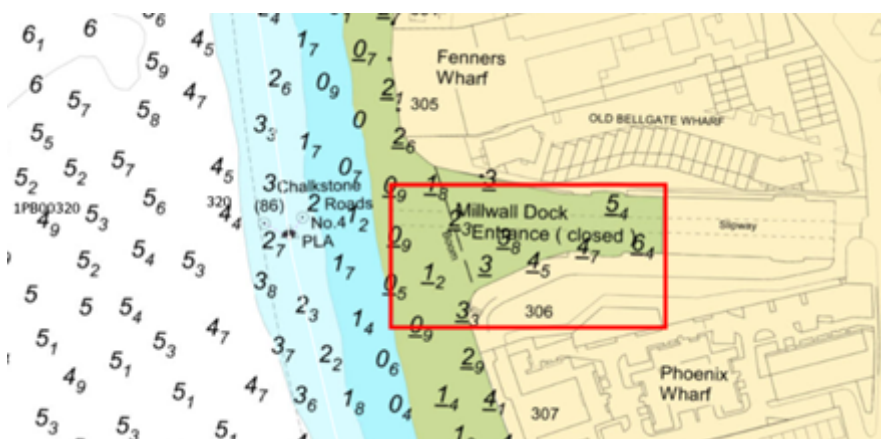
NOTICE TO MARINERS

Due to the large number of competitor vessels finishing at Ham Landing Stage, a **River Closure** will be implemented from the lower end of **Eel Pie Island** to **Richmond Bridge**. The river will be **closed to navigation** within this area from 13:30 until 16:15. This closure will be implemented by two PLA Harbour Service Launches exhibiting blue flashing lights. Only vessels officially involved in the Great River Race will be permitted to navigate within the closure area.

TEMPORARY PONTOONS

To aid with competitor vessel launching and recovery, two temporary pontoons will be installed as detailed below.

At Millwall Dock, a modular pontoon will be installed within the area illustrated by the red box on the below chartlet. Installation will take place on or about 17th September 2025 and expected to be in position until 21st September 2025. The pontoon will be marked at night by two all-round green lights marking the lower and upper extremities.



At Ham Riverside, a mooring barge and access gangway will be installed within the area illustrated by the red box on the below chartlet. Installation will take place on or about 19th September 2025, and expected to be in position until 21st September 2025. The pontoon will be marked by two all-round red lights marking the lower and upper extremities.

Telephone calls, VHF radio traffic, CCTV and radar traffic images may be recorded in the VTS Centre



U28-25

Michael Spice, Deputy Harbour Master

Published: 05/09/2025

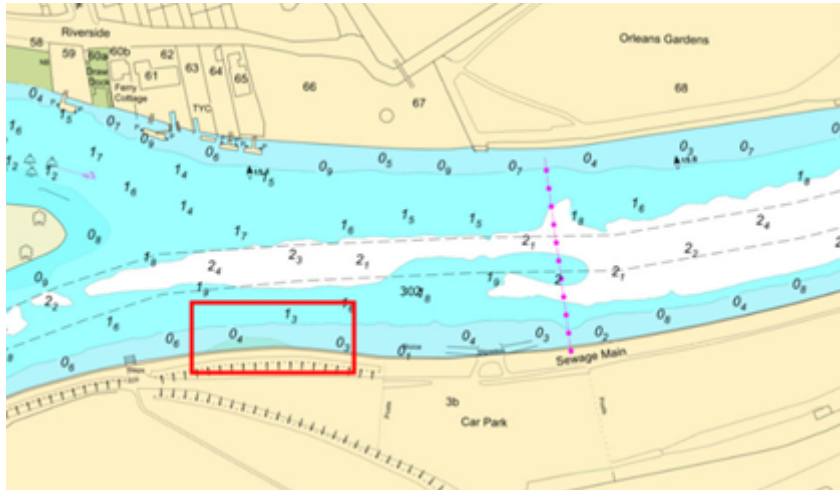
Expires: 22/09/2025

Greenwich Reach to Cross Deep



Greenwich Reach to Cross Deep - Great River Race 2025

NOTICE TO MARINERS



All timings contained in this Notice to Mariners are approximate and will be adjusted to facilitate the safe passage of competitor vessels.

Further information will be broadcast, as required, by London VTS on **VHF Channel 14**.

Telephone calls, VHF radio traffic, CCTV and radar traffic images may be recorded in the VTS Centre

Port of London Authority
London River House, Royal Pier Road,
Gravesend, Kent DA12 2BG

This Notice may be amended or withdrawn at any time. To check the validity of this notice, scan the QR code or visit pla.co.uk/notices

