

M98-25

Joshua Rebbettes, Deputy Harbour Master

Published: 03/07/2025

Expires: 04/08/2025

Nine Elms Reach

OF

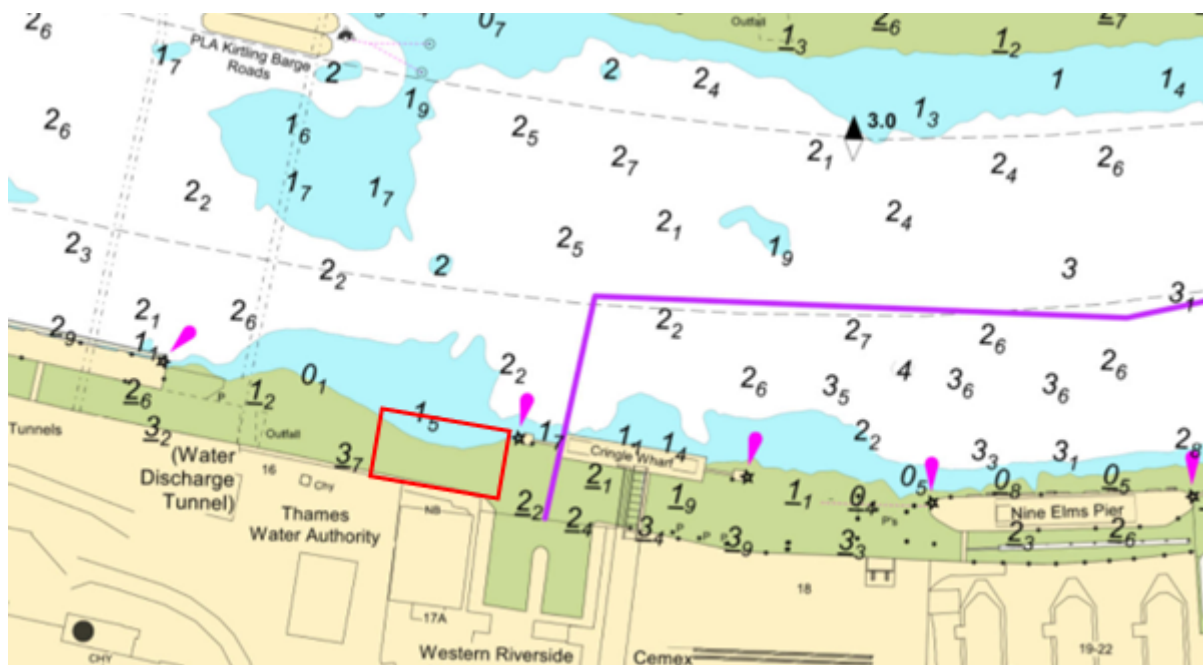
Nine Elms Reach - Cringle Dock River Wall Repairs

NOTICE TO MARINERS

Nine Elms Reach - Cringle Dock River Wall Repairs

Mariners are advised that, commencing on **Monday 14th July 2025** for approximately 3 weeks, contractors on behalf of Cory Riverside Energy will be carrying out repairs to the river wall and timber fender replacement at Cringle Dock. Works will include heavy lifting and persons working on the foreshore and at the waterline.

The general location of works is indicated by the red box on the chartlet below:



Telephone calls, VHF radio traffic, CCTV and radar traffic images may be recorded in the VTS Centre

Port of London Authority
London River House, Royal Pier Road,
Gravesend, Kent DA12 2BG

This Notice may be amended or withdrawn at any time. To check the validity of this notice, scan the QR code or visit pla.co.uk/notices



M98-25

Joshua Rebbettes, Deputy Harbour Master

Published: 03/07/2025

Expires: 04/08/2025

Nine Elms Reach

OF

Nine Elms Reach - Cringle Dock River Wall Repairs

NOTICE TO MARINERS

Any requirements to proceed with caution or at slow speed, will be made in accordance with the procedures set out in the Port of London Authority's [Port Information Guide](#), under 'London VTS', 'Section 4' with the International Code Flags 'Romeo Yankee' displayed, which are illustrated below.



The display of these signals will be in addition to any lights or shapes required under local regulations and the International Regulations for Preventing Collisions at Sea.

Further details will be broadcast by **London VTS** on VHF Channel **14**.

Telephone calls, VHF radio traffic, CCTV and radar traffic images may be recorded in the VTS Centre

