

# M97-25

Sophie Williams, Deputy Harbour Master

Published: 03/07/2025

Expires: 30/08/2025

Battersea Reach



## Battersea Reach - Imperial Wharf - Marine Pile Installation

### NOTICE TO MARINERS

## Battersea Reach - Imperial Wharf - Marine Pile Installation

Mariners are advised that on or about **Monday 14th July 2025** contractors will commence pile installation works on the inside of Imperial Wharf Marina. These works are expected to take 5 weeks, between the hours of 0800 and 1800 Monday to Friday, and 0800 and 1300 on Saturdays.

The general location of works is indicated by the red box on the chartlet below:

Telephone calls, VHF radio traffic, CCTV and radar traffic images may be recorded in the VTS Centre

Port of London Authority  
London River House, Royal Pier Road,  
Gravesend, Kent DA12 2BG

This Notice may be amended or withdrawn at any time. To check the validity of this notice, scan the QR code or visit [pla.co.uk/notices](https://pla.co.uk/notices)



# M97-25

Sophie Williams, Deputy Harbour Master

Published: 03/07/2025

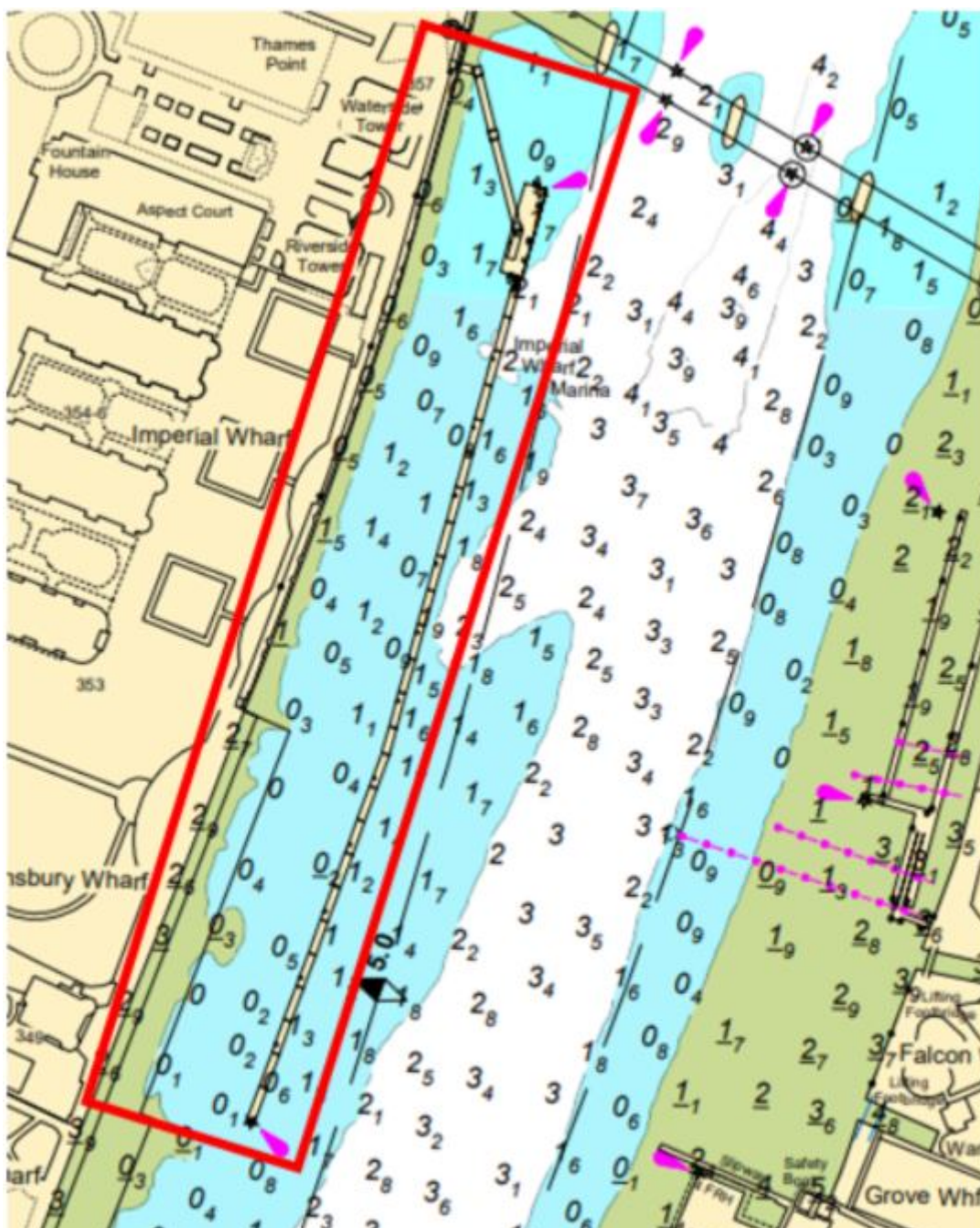
Expires: 30/08/2025

Battersea Reach

OF

## Battersea Reach - Imperial Wharf - Marine Pile Installation

### NOTICE TO MARINERS



Telephone calls, VHF radio traffic, CCTV and radar traffic images may be recorded in the VTS Centre

Port of London Authority  
London River House, Royal Pier Road,  
Gravesend, Kent DA12 2BG

This Notice may be amended or withdrawn at any  
time. To check the validity of this notice, scan the  
QR code or visit [pla.co.uk/notices](https://pla.co.uk/notices)



# M97-25

Sophie Williams, Deputy Harbour Master

Published: 03/07/2025

Expires: 30/08/2025

Battersea Reach

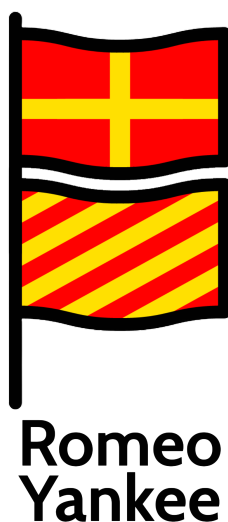


## Battersea Reach - Imperial Wharf - Marine Pile Installation

### NOTICE TO MARINERS

To facilitate these works, two spud leg pontoons will be utilised, along with associated tugs and safety boats. The first will be moored inside Imperial Wharf, with the latter moored outside the wharf, adjacent to the authorised channel.

Vessels should navigate with caution in the vicinity of the works. Any requirements to proceed with caution or at slow speed, will be made in accordance with the procedures set out in the Port of London Authority's [Port Information Guide](#), under 'London VTS', 'Section 4' with the International Code Flags 'Romeo Yankee' displayed, which are illustrated below.



**Romeo  
Yankee**

The display of these signals will be in addition to any lights or shapes required under local regulations and the International Regulations for Preventing Collisions at Sea.

Further details will be broadcast by **London VTS** on VHF Channel **14**.

Telephone calls, VHF radio traffic, CCTV and radar traffic images may be recorded in the VTS Centre

