

M86-25

Sophie Williams, Deputy Harbour Master

Published: 13/06/2025

Expires: 29/06/2025

Blackwall Reach to Upper Pool



Blackwall Reach to Upper Pool - Royal Thames Yacht Club Pageant Local Traffic Control, Pier and Lock Closures

NOTICE TO MARINERS

Blackwall Reach to Upper Pool - Royal Thames Yacht Club Pageant Local Traffic Control, Pier and Lock Closures

Mariners are advised that on Saturday 28th June 2025, the Royal Thames Yacht Club will be conducting a Pageant between West India Dock and the Upper Pool.

The event will commence from outside West India Dock, Blackwall Reach at 1415 hours, with up to 26 participating sailing vessels (under power) navigating inbound in a single column approximately 1,500 metres long, proceeding to the Upper Pool.

To safely facilitate the pageant Local Traffic Control, Pier Closures, and Lock Closures will be implemented.

PAGEANT MUSTER (approx. 1330 to 1415)

Competitors will begin exiting West India Dock and mustering in Blackwall Reach at 1330 hours. A significant number of vessels will congregate within the designated start area, located outside the north side of the authorised channel between Crown Wharf and Folly House.

This area, as illustrated in the chartlet below, is designated as a Sterile Zone, accessible only to authorised event personnel, vessels, and activities.

Telephone calls, VHF radio traffic, CCTV and radar traffic images may be recorded in the VTS Centre



M86-25

Sophie Williams, Deputy Harbour Master

Published: 13/06/2025

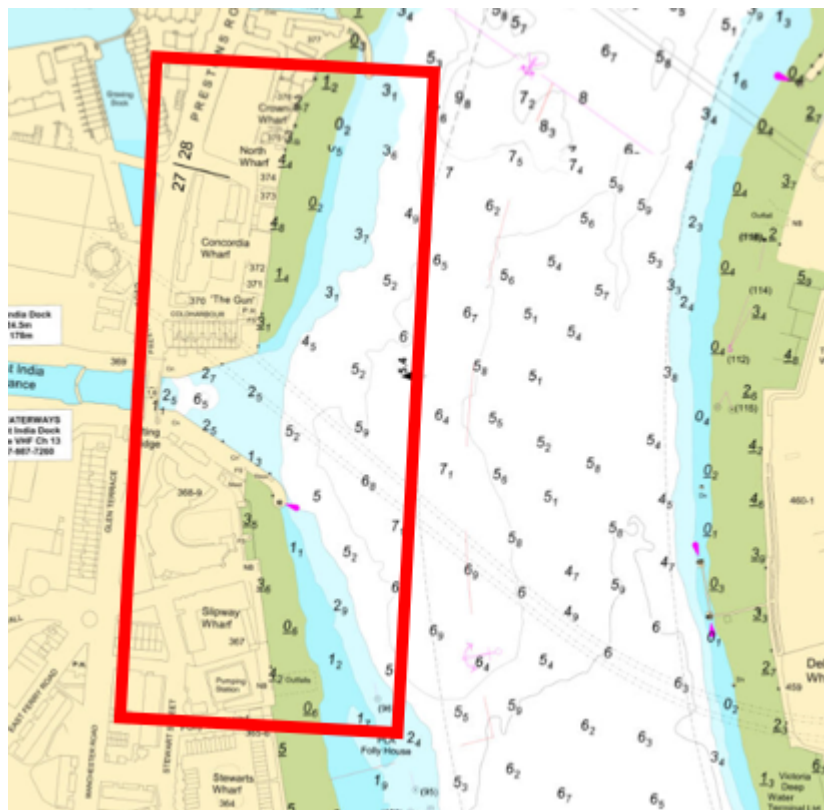
Expires: 29/06/2025

Blackwall Reach to Upper Pool



Blackwall Reach to Upper Pool - Royal Thames Yacht Club Pageant Local Traffic Control, Pier and Lock Closures

NOTICE TO MARINERS



A Harbour Service Launch will be in attendance and will conduct ad-hoc Local Traffic Control as required, callsign '**PAGEANT CONTROL**', operating on **VHF Channel 14**.

Mariners are advised to navigate with caution and comply with instructions issued by the Harbour Service Launch.

PAGEANT & ASSOCIATED LOCK/PIER CLOSURES (from 1415 until 1600)

The Pageant will depart the muster area at 1415, proceeding inbound in a single column approximately 1500m long, keeping to the starboard side of the channel. It will be accompanied by event safety vessels and PLA Harbour Service Launches.

To ensure safety, piers and locks on the northern side of the Thames will be temporarily closed as the Pageant approaches. Closures will last approximately 7-10 minutes, reopening once the final vessel has

Telephone calls, VHF radio traffic, CCTV and radar traffic images may be recorded in the VTS Centre



M86-25

Sophie Williams, Deputy Harbour Master
Published: 13/06/2025
Expires: 29/06/2025
Blackwall Reach to Upper Pool



Blackwall Reach to Upper Pool - Royal Thames Yacht Club Pageant Local Traffic Control, Pier and Lock Closures

NOTICE TO MARINERS

passed.

LOCATION	APPROXIMATE TIME
Masthouse Terrace Pier	1440
Canary Wharf Pier	1455
Limehouse Marina	1500
Shadwell basin	1510
Tunnel Pier	1515
Police Piers	1515
St Katherines Dock	1520
Tower Bridge Quay	1520

Closures will be lifted by an attending PLA Harbour Service Launch.

ST KATHERINES DOCK (from 1520 until 1600)

The majority of Pageant vessels will proceed directly into St Katharine Docks, which will be in free flow to facilitate smooth entry.

Exceptions include:

- Six vessels continuing through Tower Bridge
- RNLI vessel
- One spectator vessel proceeding to Tower Pier

Mariners are advised to remain clear of these areas during and follow instructions from PLA Harbour Service Launches.

LOCAL TRAFFIC CONTROL IN THE UPPER POOL (1520 to 1550)

Six vessels will transit through No. 2 arch of Tower Bridge, with a bridge lift scheduled for 1520. These vessels will turn in the Upper Pool before returning to St Katharine Docks at approximately 1550.

During this period, **Local Traffic Control** will be implemented with a PLA Harbour Service Launch in attendance, exhibiting blue flashing lights. When in force, Local Traffic Control will be broadcast by London VTS on VHF Ch.14. All vessels intending to the Upper Pool are to call **‘PAGEANT CONTROL’** on **VHF Channel 14** as directed by the harbour Service Launch and/or London VTS.

Telephone calls, VHF radio traffic, CCTV and radar traffic images may be recorded in the VTS Centre



M86-25

Sophie Williams, Deputy Harbour Master

Published: 13/06/2025

Expires: 29/06/2025

Blackwall Reach to Upper Pool



Blackwall Reach to Upper Pool - Royal Thames Yacht Club Pageant Local Traffic Control, Pier and Lock Closures

NOTICE TO MARINERS

NAVIGATION OF OTHER RIVER USERS

Except for the Upper Pool Local Traffic Control, Pier Closures, and Lock Closures the river will remain open to navigation throughout the Pageant. Mariners are reminded to navigate with caution and with due regard to prevailing conditions and circumstances.

All river users are advised that a temporary speed reduction will be in effect in the vicinity of the Pageant vessels. Requirements to proceed with caution or at slow speed will be made in accordance with the procedures set out in the Port of London Authority's Port Information Guide, under 'London VTS', 'Section 4' with the International Code Flags 'Romeo Yankee' displayed, which are illustrated below.



**Romeo
Yankee**

All timings provided in this Notice are approximate and may be adjusted to ensure the safe passage of Pageant vessels.

Further information and updates will be broadcast by **London VTS** on **VHF Channel 14**, as required.

Telephone calls, VHF radio traffic, CCTV and radar traffic images may be recorded in the VTS Centre

