

M85-24

Cathryn Spain, Senior Harbour Master

Published: 11/11/2024

Expires: 31/12/2025

Barn Elms Reach



Barn Elms Reach - Thames Tideway Tunnel Putney Foreshore Embankment CSO Diversion/Activation.

NOTICE TO MARINERS

Barn Elms Reach - Thames Tideway Tunnel Putney Foreshore Embankment CSO Diversion/Activation.

Mariners are advised of the continued interim operation of the Tideway Tunnel Combined Sewer Outfall (CSO) at the Putney Embankment site.

The CSO may discharge onto the foreshore and into the river whenever there is, or has recently been, a significant amount of rain in the local catchment area. The discharge amount and velocity will vary, but during a storm this could be up to 4 knots at low water, lessening the further from the outfall (example modelled flow velocities are included at the end of this Notice).

The approximate location of the CSO at the Putney Embankment Foreshore site is shown in red on the chartlet below.

Telephone calls, VHF radio traffic, CCTV and radar traffic images may be recorded in the VTS Centre



M85-24

Cathryn Spain, Senior Harbour Master

Published: 11/11/2024

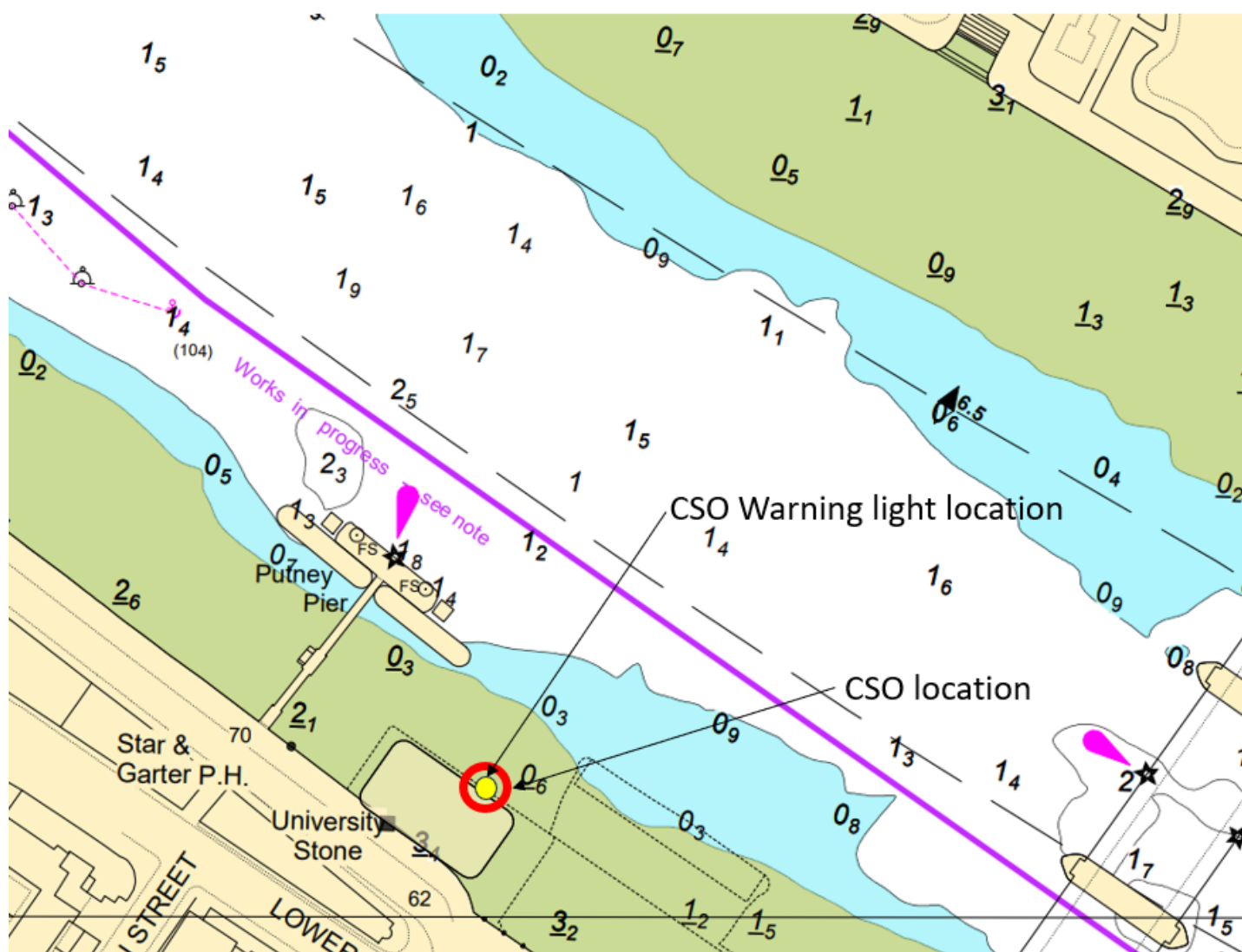
Expires: 31/12/2025

Barn Elms Reach



Barn Elms Reach - Thames Tideway Tunnel Putney Foreshore Embankment CSO Diversion/Activation.

NOTICE TO MARINERS



A set of warning lights will be mounted vertically in front of a black backboard on the permanent works structure embankment wall above the CSO with a set of repeater lights mounted above. The location of the CSO warning lights are marked in yellow on the above chartlet.

Telephone calls, VHF radio traffic, CCTV and radar traffic images may be recorded in the VTS Centre



M85-24

Cathryn Spain, Senior Harbour Master

Published: 11/11/2024

Expires: 31/12/2025

Barn Elms Reach



Barn Elms Reach - Thames Tideway Tunnel Putney Foreshore Embankment CSO Diversion/Activation.

NOTICE TO MARINERS

The lights will flash a yellow alternating 1 second pattern, visible by day and by night whenever the CSO is discharging or likely to discharge.

Tideway advise the lights will activate a minimum of 3.5 minutes before any discharge will occur.



**CSO
Warning
Lights**

**CSO Outfall
Location**

All mariners are advised to exercise caution when passing the site, particularly over the slack water period (around two hours over low water and an hour over high water) if there has been heavy rain or if there is a Met Office weather warning for rain or storms in force for the London area and to pay attention to warnings given. The foreshore in the vicinity of the CSO should be avoided during these times.

System wide CSO discharge alerts and warnings will be broadcast by London VTS on Ch 14. Additionally, the live status of each CSO is available on the PLA website, www.pla.co.uk/cso-status.

The CSO is partly connected to the tunnel which will intercept most of the discharges, but any larger storms and rain downpours may result in a discharge directly into the river. The Tunnel is expected to be in full service later in 2025. A new Notice will be issued at a later date to advise of permanent Tideway Tunnel operations.

Telephone calls, VHF radio traffic, CCTV and radar traffic images may be recorded in the VTS Centre



M85-24

Cathryn Spain, Senior Harbour Master

Published: 11/11/2024

Expires: 31/12/2025

Barn Elms Reach



Barn Elms Reach - Thames Tideway Tunnel Putney Foreshore Embankment CSO Diversion/Activation.

NOTICE TO MARINERS

Further information on the characteristics of the CSO discharges, assessments of risk and potential impacts on mariners, which were undertaken by Tideway's designers, are available on their website. Go to www.tideway.london/contact-us/document-library and follow the link to [CSO DISCHARGES - RISK TO NAVIGATION](#). Mariners should consult these documents when passage planning.

(This link will take you to a third-party website which does not belong to the Port of London of Authority and may have different security, privacy and accessibility standards).

Example discharge plumes and velocities in m/sec for a typical year return period discharge

(1 m/sec = 1.94 knots)

Telephone calls, VHF radio traffic, CCTV and radar traffic images may be recorded in the VTS Centre



M85-24

Cathryn Spain, Senior Harbour Master

Published: 11/11/2024

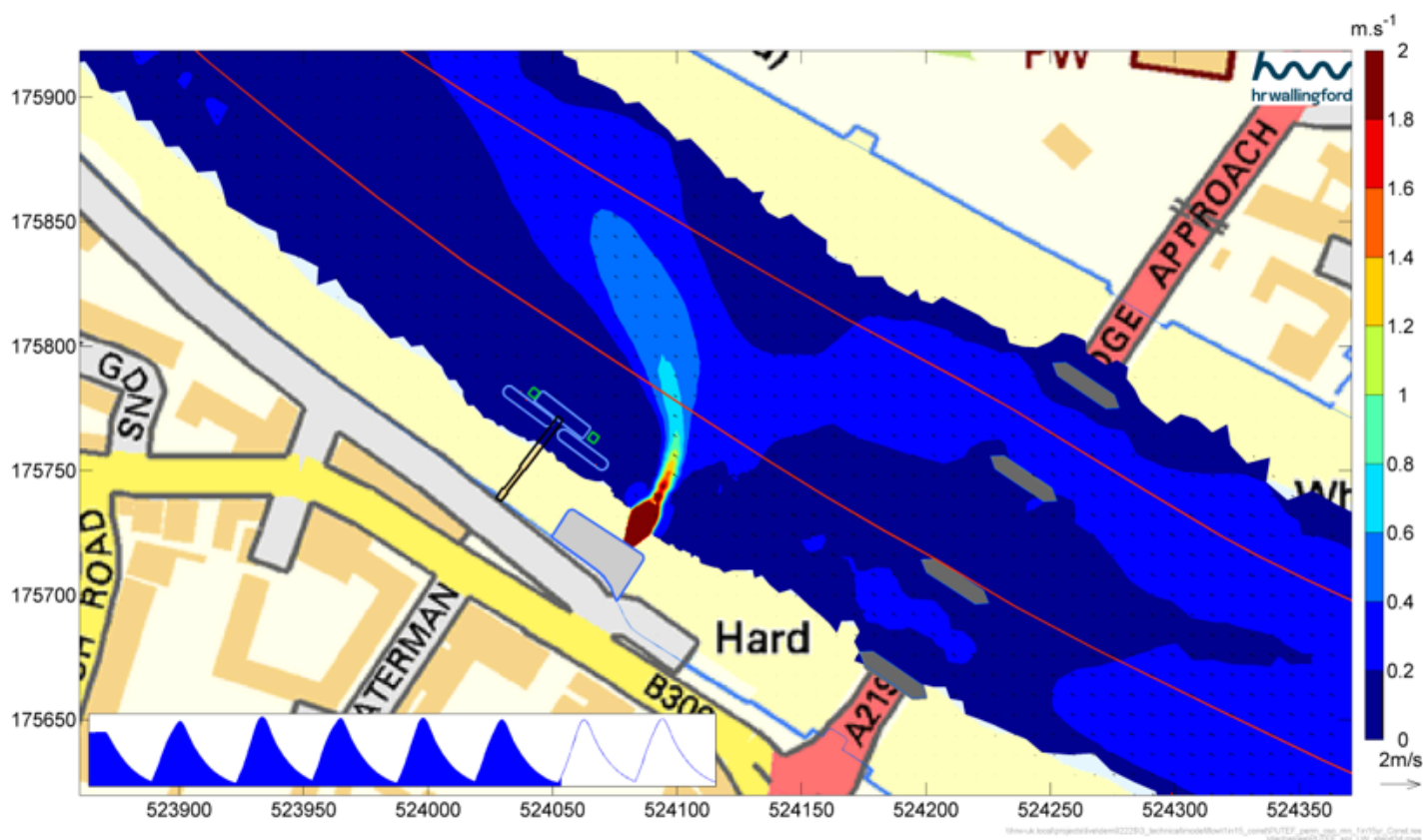
Expires: 31/12/2025

Barn Elms Reach



Barn Elms Reach - Thames Tideway Tunnel Putney Foreshore Embankment CSO Diversion/Activation.

NOTICE TO MARINERS



Typical year return period discharge 10 minutes after low water slacks

Telephone calls, VHF radio traffic, CCTV and radar traffic images may be recorded in the VTS Centre

Port of London Authority
London River House, Royal Pier Road,
Gravesend, Kent DA12 2BG

This Notice may be amended or withdrawn at any
time. To check the validity of this notice, scan the
QR code or visit pla.co.uk/notices



M85-24

Cathryn Spain, Senior Harbour Master

Published: 11/11/2024

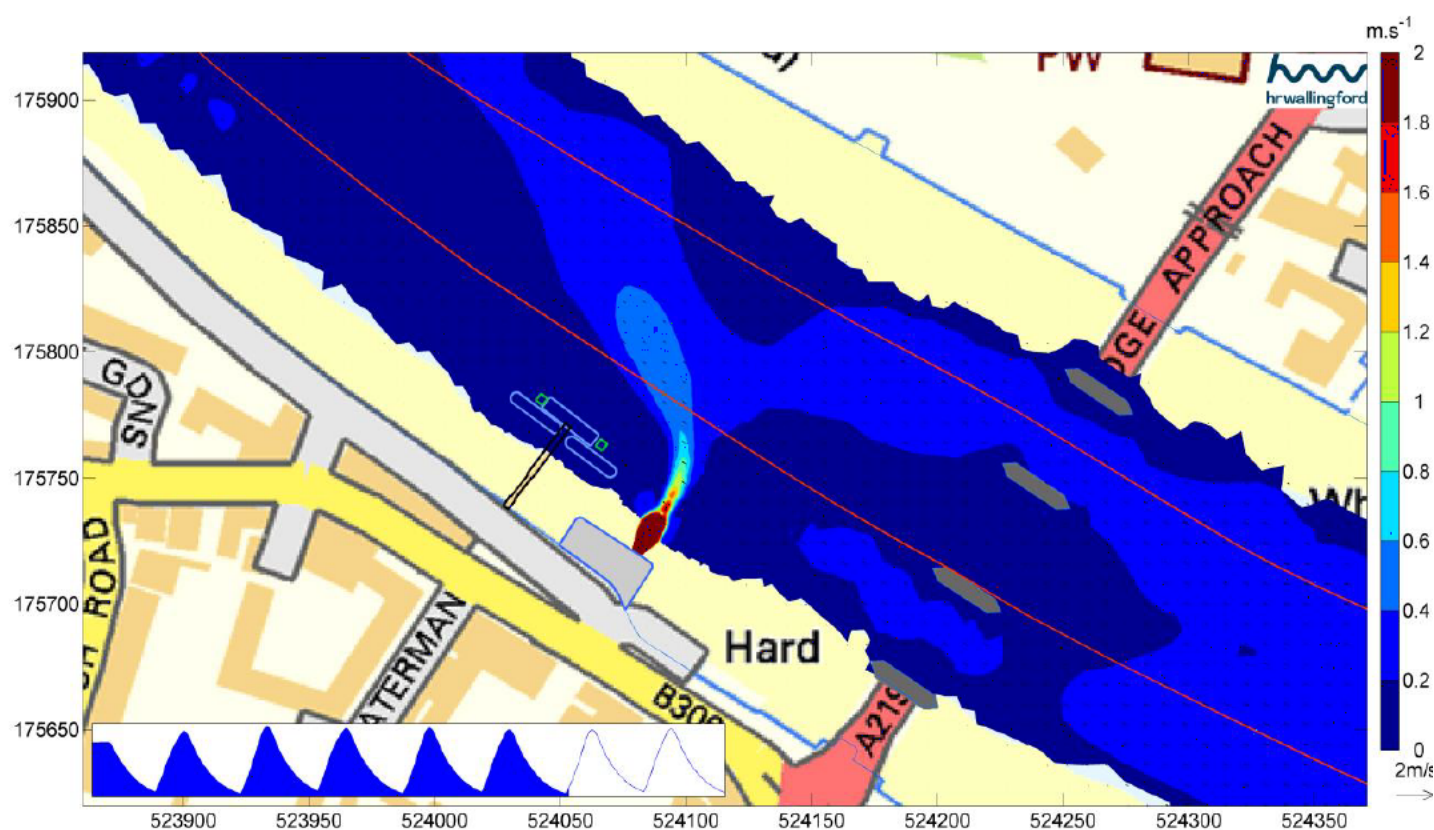
Expires: 31/12/2025

Barn Elms Reach



Barn Elms Reach - Thames Tideway Tunnel Putney Foreshore Embankment CSO Diversion/Activation.

NOTICE TO MARINERS



Typical year discharge event at spring low water slack

Telephone calls, VHF radio traffic, CCTV and radar traffic images may be recorded in the VTS Centre

Port of London Authority
London River House, Royal Pier Road,
Gravesend, Kent DA12 2BG

This Notice may be amended or withdrawn at any time. To check the validity of this notice, scan the QR code or visit pla.co.uk/notices

