

M69-24

Adam Layer, Harbour Master

Published: 03/10/2024

Expires: 30/09/2025

Lower Pool



Lower Pool - King Edward Memorial Park Construction

NOTICE TO MARINERS

Lower Pool - King Edward Memorial Park Construction

This Notice supersedes and replaces M5-24, which is hereby cancelled.

Mariners are advised of the continuing Tideway Tunnel Project temporary cofferdam deconstruction works at King Edward Memorial Park, near Shadwell Basin, including lifting works from a crane barge and diving operations. Works are expected to continue until the end of September 2025.

At times a 500t barge may be moored outside the works area marked on the chart. The chartlet below shows the maximum extent at which this barge may be moored (in red). In addition, project barges will be using the site at Chambers Wharf and the Stone Stairs Barge Tier, which is leased for the duration of these works.

Telephone calls, VHF radio traffic, CCTV and radar traffic images may be recorded in the VTS Centre

Port of London Authority
London River House, Royal Pier Road,
Gravesend, Kent DA12 2BG

This Notice may be amended or withdrawn at any time. To check the validity of this notice, scan the QR code or visit pla.co.uk/notices



M69-24

Adam Layer, Harbour Master

Published: 03/10/2024

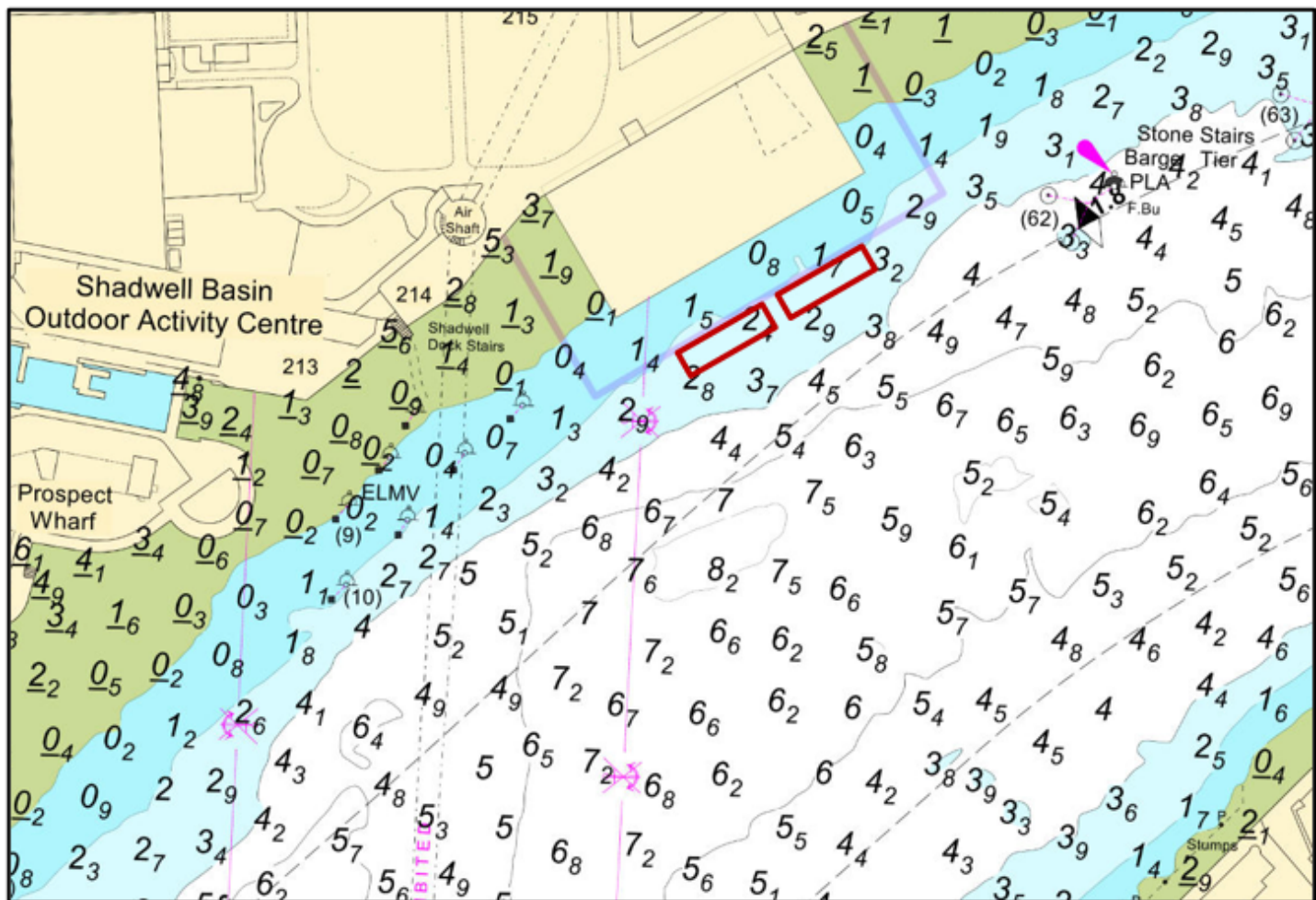
Expires: 30/09/2025

Lower Pool

OF

Lower Pool - King Edward Memorial Park Construction

NOTICE TO MARINERS



Works involve excavation, pile removal, dredging and laying of scour protection using divers and a variety of crane barges, supply barges, dredgers, tugs, work boats and multicat vessels. The vessels will maintain a listening watch on VHF channel 14.

Crane lifts of heavy piles, and dive works involving use of cutting equipment in low visibility waters, are ongoing during this project and require passing vessels to avoid causing wash, particularly over the high-water period when reflection off the river wall can increase the effects.

Telephone calls, VHF radio traffic, CCTV and radar traffic images may be recorded in the VTS Centre

Port of London Authority
London River House, Royal Pier Road,
Gravesend, Kent DA12 2BG

This Notice may be amended or withdrawn at any time. To check the validity of this notice, scan the QR code or visit pla.co.uk/notices



M69-24

Adam Layer, Harbour Master

Published: 03/10/2024

Expires: 30/09/2025

Lower Pool

OF

Lower Pool - King Edward Memorial Park Construction

NOTICE TO MARINERS

All vessels are reminded of the importance of passing the site at slow speed when the International Code Flags 'Romeo Yankee (RY)' are displayed and broadcasts are made by London VTS on VHF ch 14, in accordance with the Port of London Authority's [Port Information Guide](#), under 'London VTS', section 4.



Romeo
Yankee

PLA Safety Bulletin **SB8-24** issued on 9th August 2024 shows limits of the speed reduction area; from Stone Stairs to the east and Prospect Wharf to the west.

Further details will be broadcast by London VTS on VHF Channel 14.

Telephone calls, VHF radio traffic, CCTV and radar traffic images may be recorded in the VTS Centre

Port of London Authority
London River House, Royal Pier Road,
Gravesend, Kent DA12 2BG

This Notice may be amended or withdrawn at any time. To check the validity of this notice, scan the QR code or visit pla.co.uk/notices

