

# M68-25

Jamie Gilbert, Assistant Harbour Master

Published: 09/05/2025

Expires: 18/05/2025

Greenwich Reach



## Greenwich Reach - Fireworks Display

### NOTICE TO MARINERS

## Greenwich Reach - Fireworks Display

Mariners are advised that on **Saturday 17th May 2025** at approximately 21:40 for a duration of approximately 5 minutes, a fireworks display will be taking place in the vicinity of the Royal Naval College, Greenwich.

An exclusion zone will be in force between 21:30 and 22:00 between the upriver end of Greenwich Pier and the upriver end of the former Greenwich Power Station Pier. This Exclusion zone is depicted as 'Closed to Navigation' in the chartlet below:

Telephone calls, VHF radio traffic, CCTV and radar traffic images may be recorded in the VTS Centre

Port of London Authority  
London River House, Royal Pier Road,  
Gravesend, Kent DA12 2BG

This Notice may be amended or withdrawn at any time. To check the validity of this notice, scan the QR code or visit [pla.co.uk/notices](https://pla.co.uk/notices)



# M68-25

Jamie Gilbert, Assistant Harbour Master

Published: 09/05/2025

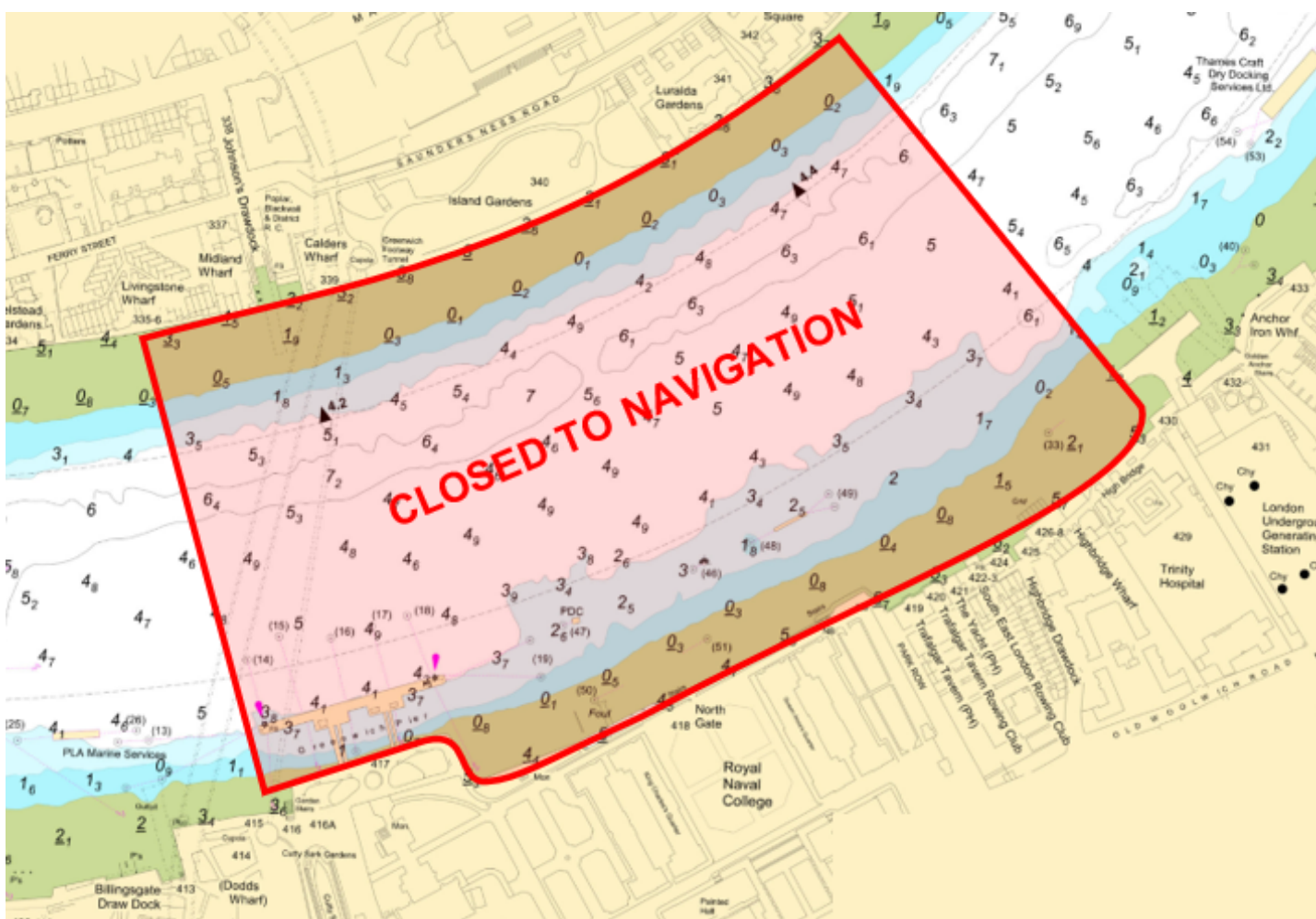
Expires: 18/05/2025

Greenwich Reach



## Greenwich Reach - Fireworks Display

### NOTICE TO MARINERS



While the Exclusion Zone is in force, no vessels are permitted to enter and manned vessels must not remain within, the Exclusion Zone, with the exception of emergency services vessels responding to an incident and vessels engaged in fireworks operations.

The upper and lower Exclusion Zone boundaries will each be patrolled by a PLA Harbour Service Launch, displaying blue flashing lights.

Vessels engaged in the fireworks operations include tug Haven Supporter and barge MH125.

Telephone calls, VHF radio traffic, CCTV and radar traffic images may be recorded in the VTS Centre



# M68-25

Jamie Gilbert, Assistant Harbour Master

Published: 09/05/2025

Expires: 18/05/2025

Greenwich Reach



## Greenwich Reach - Fireworks Display

### NOTICE TO MARINERS

All vessels are to navigate with caution in the vicinity of the Exclusion Zone boundaries; maintain an effective, continuous listening watch on VHF Channel 14; and promptly comply with all instructions which may be given by the attending Harbour Service Launches.

Further details will be broadcast by **London VTS** on **VHF 14**.

Telephone calls, VHF radio traffic, CCTV and radar traffic images may be recorded in the VTS Centre

Port of London Authority  
London River House, Royal Pier Road,  
Gravesend, Kent DA12 2BG

This Notice may be amended or withdrawn at any time. To check the validity of this notice, scan the QR code or visit [pla.co.uk/notices](https://pla.co.uk/notices)

