

M6-25

Sophie Williams, Deputy Harbour Master

Published: 17/01/2025

Expires: 30/04/2025

Limehouse Reach



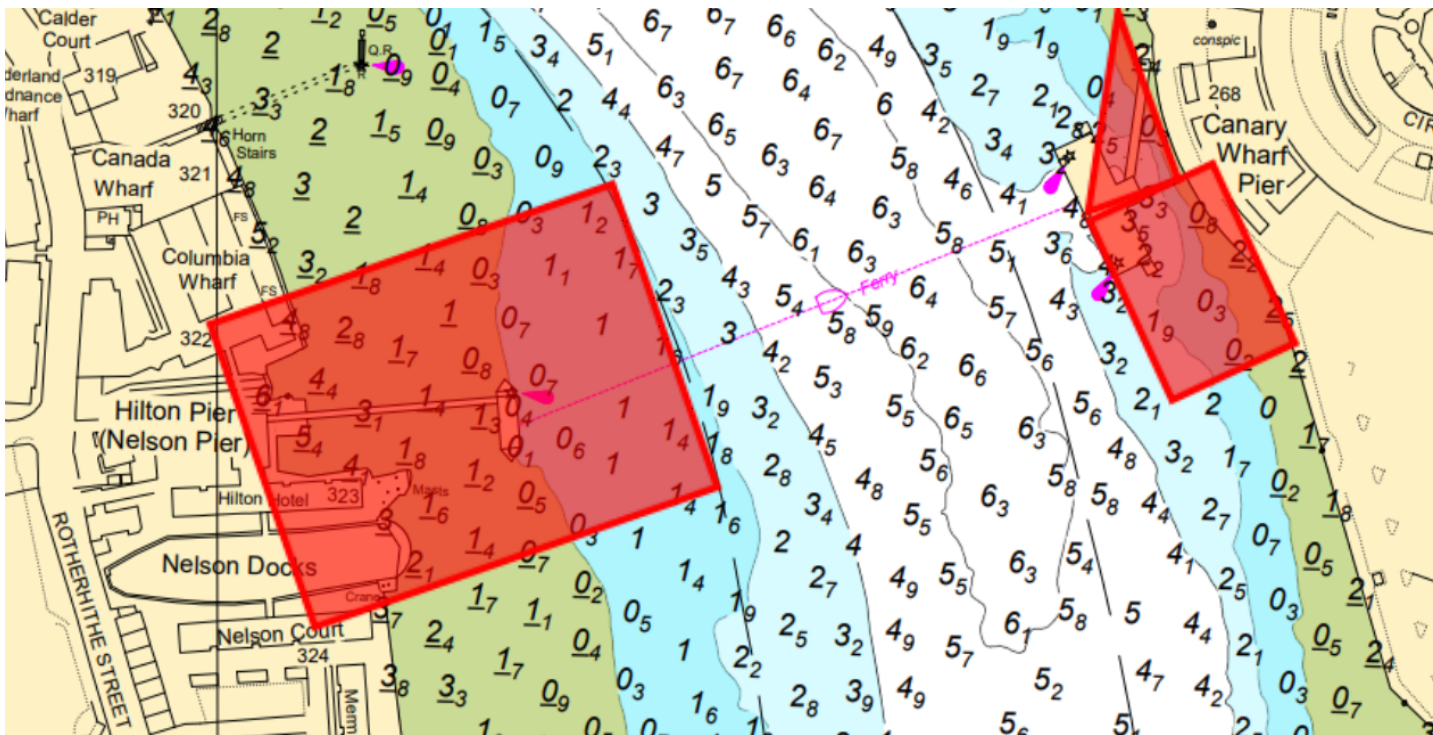
Limehouse Reach - Hilton Pier & Canary Wharf Works

NOTICE TO MARINERS

Limehouse Reach - Hilton Pier & Canary Wharf Works

Mariners are advised that contractors will be conducting piling, demolition and construction works at Canary Wharf and Hilton Pier, commencing on Monday 20th January 2025. These works are expected to take approximately 3 months.

During this time exclusion zones will be in place at Canary Wharf and Hilton Pier, as shown on the chartlet below:



Telephone calls, VHF radio traffic, CCTV and radar traffic images may be recorded in the VTS Centre



M6-25

Sophie Williams, Deputy Harbour Master

Published: 17/01/2025

Expires: 30/04/2025

Limehouse Reach



Limehouse Reach - Hilton Pier & Canary Wharf Works

NOTICE TO MARINERS

All vessels, power driven and human powered shall keep well clear of the exclusion zones. Only approved vessels may enter the exclusion areas.

These works will involve the Jack Up Barge HAVEN SEARISER 4, flat top barge HAVEN SEABREEZE, as well as associated tugs and safety boats. These vessels will be located within the exclusion area depicted above, and may at points be moving between the two sites.

Vessels should navigate with caution in the vicinity of the works. During the works, requests for vessels to proceed with caution or pass at slow speed may be made by London VTS on VHF ch.14, in accordance with the Port of London Authority's [Port Information Guide](#), under 'London VTS', section 4. International Code Flags 'Romeo Yankee (RY)' will be displayed accordingly.



**Romeo
Yankee**

The new piles at Hilton Pier will be temporarily lit by night (illustrated below) as follows:

- 2 all-round fixed RED lights displayed vertically on the upper mooring pile and midstream berthing pile;
- All-round fixed WHITE lights on the remaining piles.

Telephone calls, VHF radio traffic, CCTV and radar traffic images may be recorded in the VTS Centre



M6-25

Sophie Williams, Deputy Harbour Master

Published: 17/01/2025

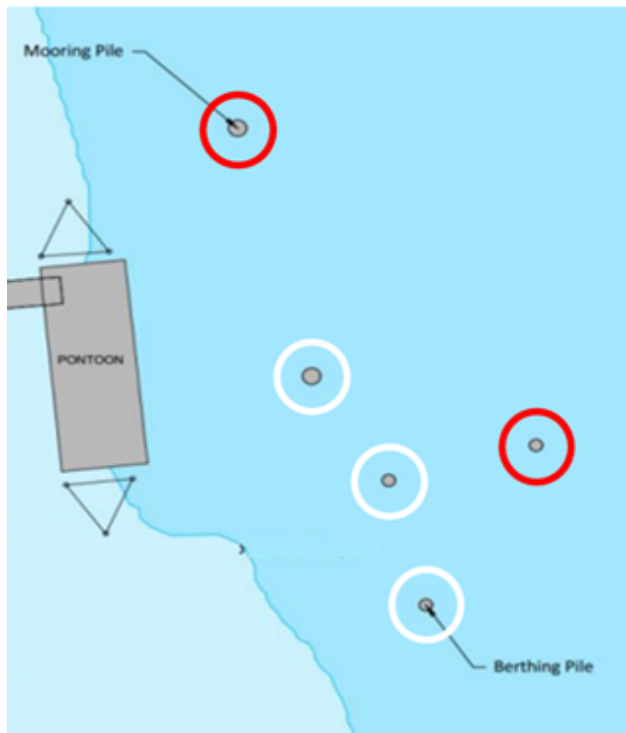
Expires: 30/04/2025

Limehouse Reach



Limehouse Reach - Hilton Pier & Canary Wharf Works

NOTICE TO MARINERS



The piles at Canary Wharf are behind the exiting pier and will not be lit.

Further details will be broadcast by London VTS on VHF Channel 14.

Telephone calls, VHF radio traffic, CCTV and radar traffic images may be recorded in the VTS Centre

