

M57-24

Cathryn Spain, Senior Harbour Master

Published: 05/08/2024

Expires: 09/01/2026

Lower Pool



King Edward Memorial Park CSO Diversion

NOTICE TO MARINERS

King Edward Memorial Park CSO Diversion

Mariners are advised of the continued interim operation of the Tideway Tunnel Combined Sewer Outfall (CSO) at the King Edward Memorial Park site.

The CSO may discharge rain-water and untreated sewage into the river whenever there is, or has recently been, rain in the local catchment area. The discharge amount and velocity will vary, but during a storm this could be around 6 knots, lessening further from the outfall. Lower powered and less manoeuvrable vessels should be aware of the possibility of cross currents and adjust their passage accordingly (example modelled flow velocities are included at the end of this Notice). Manoeuvrable motorised vessels travelling within the navigable channel will likely feel little effect.

The Tideway Tunnel is now partly in operation pending further storm testing and this site is connected to the tunnel, meaning the expected number of discharges into the river is reduced to roughly 6-8 a year. These will only occur if the tunnel becomes full or it is not available.

The approximate location of the CSO on the King Edward site is shown in red on the chartlet below.

Telephone calls, VHF radio traffic, CCTV and radar traffic images may be recorded in the VTS Centre



M57-24

Cathryn Spain, Senior Harbour Master

Published: 05/08/2024

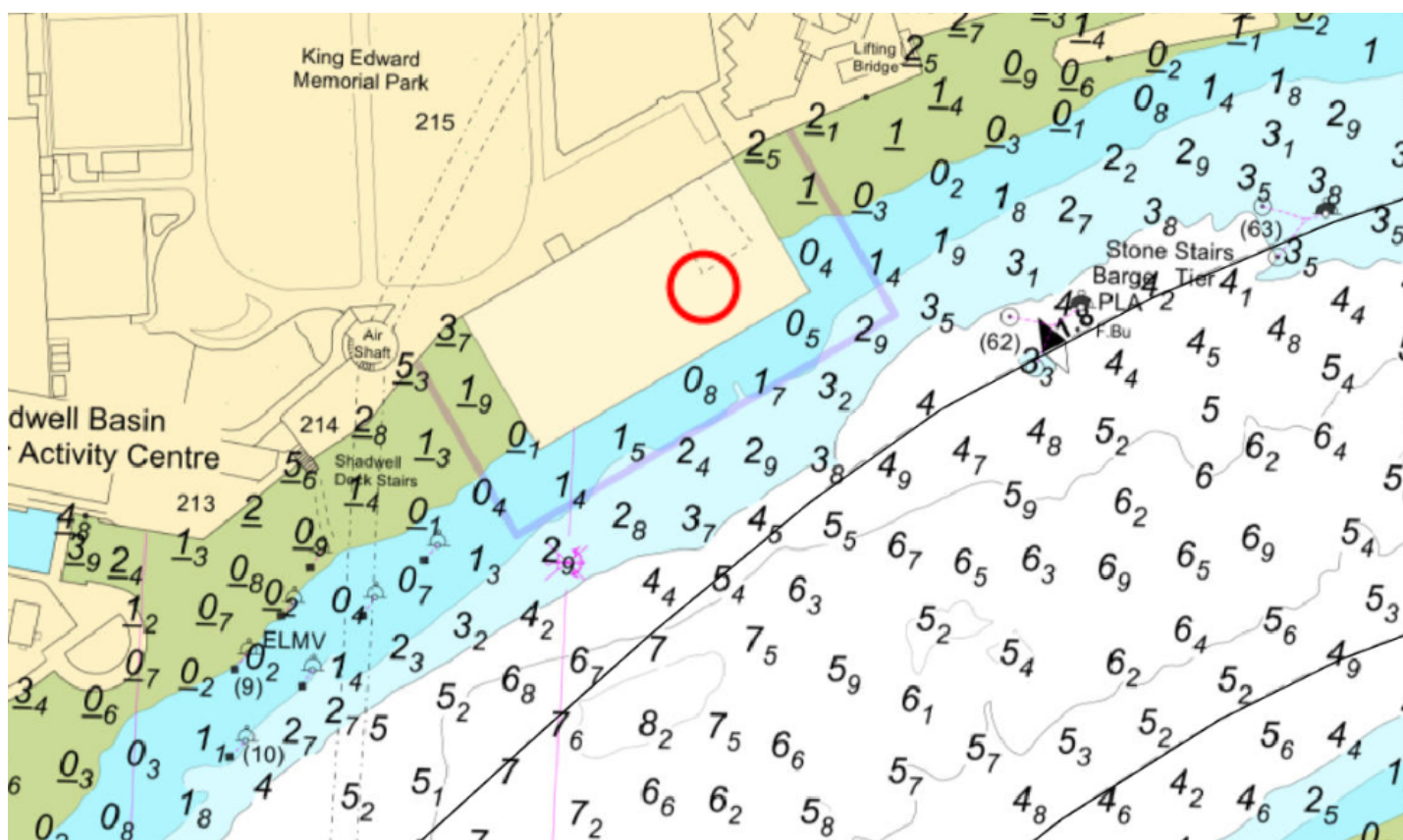
Expires: 09/01/2026

Lower Pool



King Edward Memorial Park CSO Diversion

NOTICE TO MARINERS



A set of warning lights will be mounted vertically in front of a black backboard above the CSO. The lights will flash a yellow alternating 1 second pattern, visible day and night at a range of up to 200m, whenever the CSO is discharging or likely to discharge.

Telephone calls, VHF radio traffic, CCTV and radar traffic images may be recorded in the VTS Centre

Port of London Authority
London River House, Royal Pier Road,
Gravesend, Kent DA12 2BG

This Notice may be amended or withdrawn at any time. To check the validity of this notice, scan the QR code or visit pla.co.uk/notices



M57-24

Cathryn Spain, Senior Harbour Master

Published: 05/08/2024

Expires: 09/01/2026

Lower Pool



King Edward Memorial Park CSO Diversion

NOTICE TO MARINERS



Telephone calls, VHF radio traffic, CCTV and radar traffic images may be recorded in the VTS Centre

Port of London Authority
London River House, Royal Pier Road,
Gravesend, Kent DA12 2BG

This Notice may be amended or withdrawn at any time. To check the validity of this notice, scan the QR code or visit pla.co.uk/notices



M57-24

Cathryn Spain, Senior Harbour Master

Published: 05/08/2024

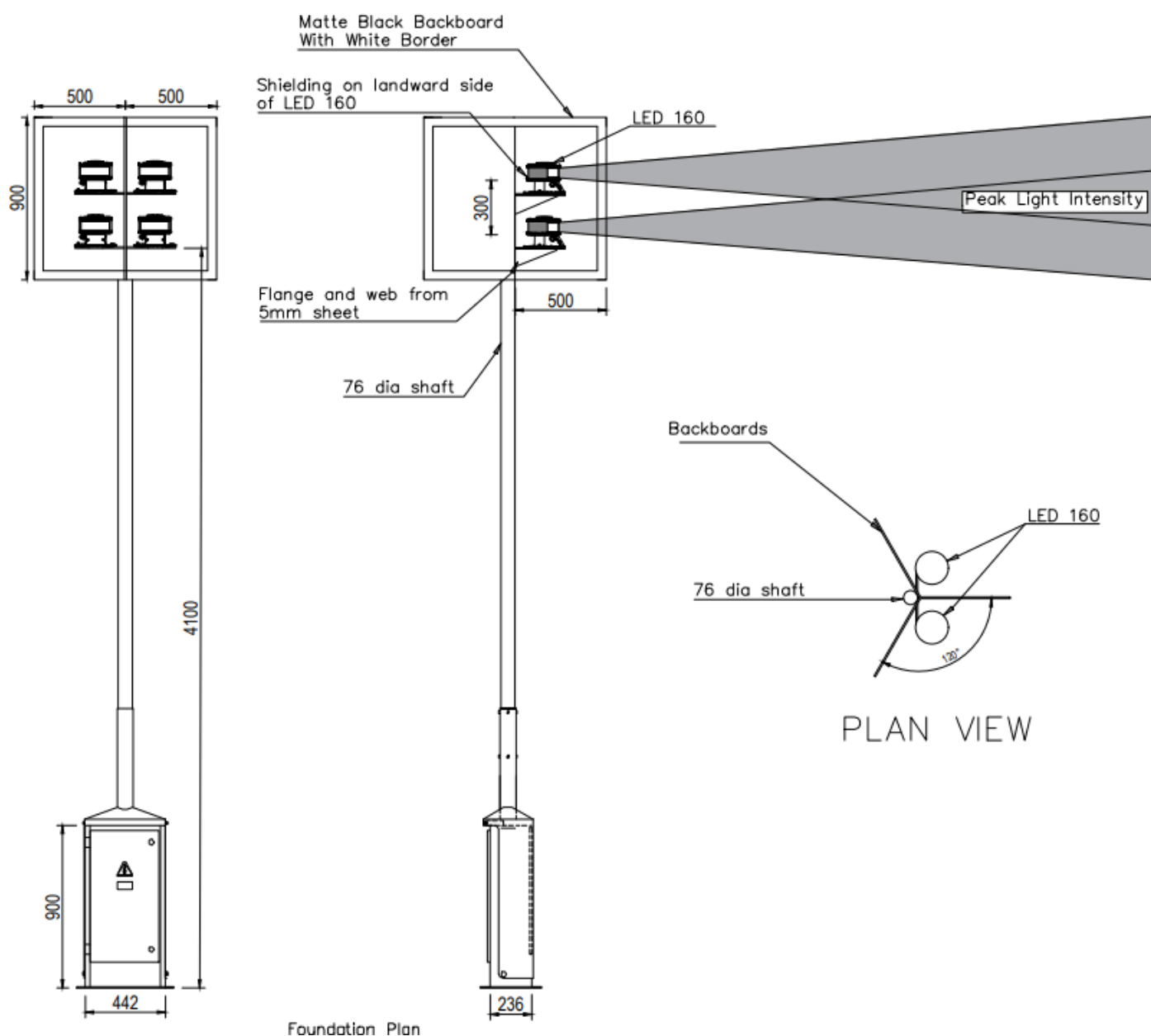
Expires: 09/01/2026

Lower Pool



King Edward Memorial Park CSO Diversion

NOTICE TO MARINERS



Telephone calls, VHF radio traffic, CCTV and radar traffic images may be recorded in the VTS Centre



M57-24

Cathryn Spain, Senior Harbour Master

Published: 05/08/2024

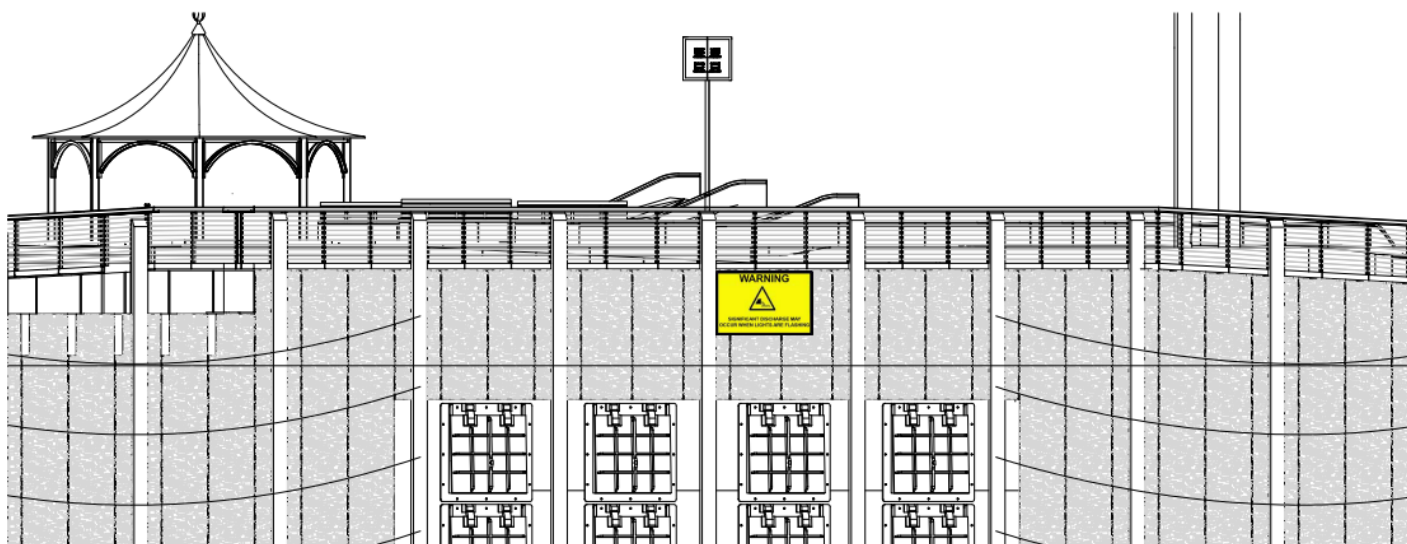
Expires: 09/01/2026

Lower Pool



King Edward Memorial Park CSO Diversion

NOTICE TO MARINERS



CSO discharge alerts and warnings will be broadcast by London VTS on Ch 14. Additionally, the live status of each CSO is available on the PLA website: <https://pla.co.uk/cso-status>

Routine VTS broadcasts will also include a warning if Tideway inform us there is a likelihood there will be a discharge within the next hour from the site.

Human powered recreational craft, lower powered vessels and craft engaged in towing are advised to avoid the area over the slack water period (around two hours over low water and an hour over high water) if there has been heavy rain or 'if there is a Met Office weather warning for rain or storms in force for the London area.

The CSO is partly connected to the tunnel which will intercept most of the discharges, but any larger storms and rain downpours may result in a discharge directly into the river. The Tunnel is expected to be in full service later in 2025. A new Notice will be issued at a later date to advise of permanent Tideway Tunnel

Telephone calls, VHF radio traffic, CCTV and radar traffic images may be recorded in the VTS Centre



M57-24

Cathryn Spain, Senior Harbour Master

Published: 05/08/2024

Expires: 09/01/2026

Lower Pool



King Edward Memorial Park CSO Diversion

NOTICE TO MARINERS

operations.

All mariners are advised to exercise caution when passing the site and to pay attention to warnings given.

Further information on the characteristics of the CSO discharges, assessments of risk and potential impacts on mariners which were undertaken by Tideway's designers are available on their website

www.tideway.london/contact-us/document-library and follow the link to [CSO DISCHARGES - RISK TO NAVIGATION](#). Mariners should consult these documents when passage planning.

(These links will take you to a third-party website which does not belong to the Port of London of Authority and may have different security, privacy and accessibility standards.)

Example discharge plumes and velocities in m/sec for a 5 year return period discharge

(1 m/sec = 1.94 knots)

Telephone calls, VHF radio traffic, CCTV and radar traffic images may be recorded in the VTS Centre



M57-24

Cathryn Spain, Senior Harbour Master

Published: 05/08/2024

Expires: 09/01/2026

Lower Pool



King Edward Memorial Park CSO Diversion

NOTICE TO MARINERS

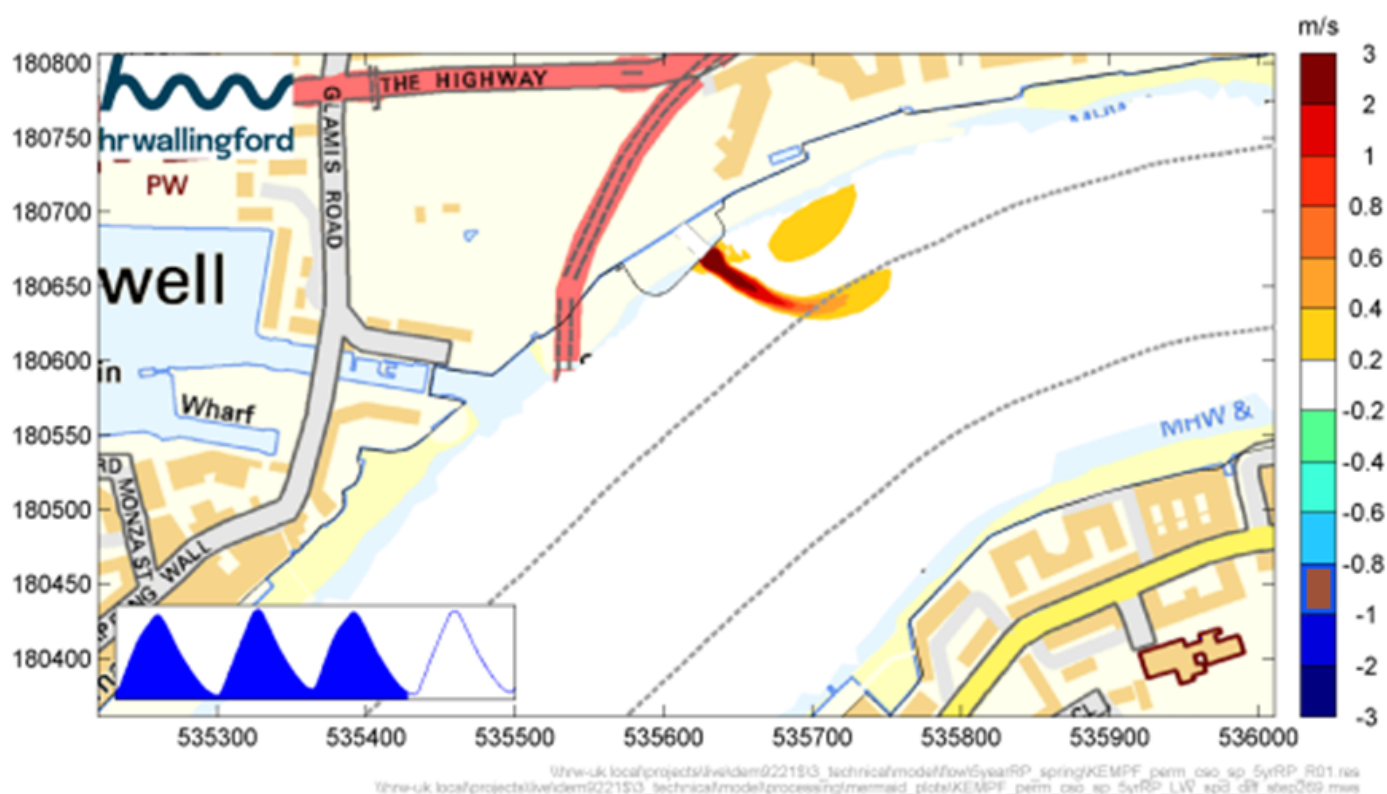


Figure B.144: 5 year RP event spring tide current differences, 60 mins before LW slack

Source: HR Wallingford Ltd

Telephone calls, VHF radio traffic, CCTV and radar traffic images may be recorded in the VTS Centre



M57-24

Cathryn Spain, Senior Harbour Master

Published: 05/08/2024

Expires: 09/01/2026

Lower Pool



King Edward Memorial Park CSO Diversion

NOTICE TO MARINERS

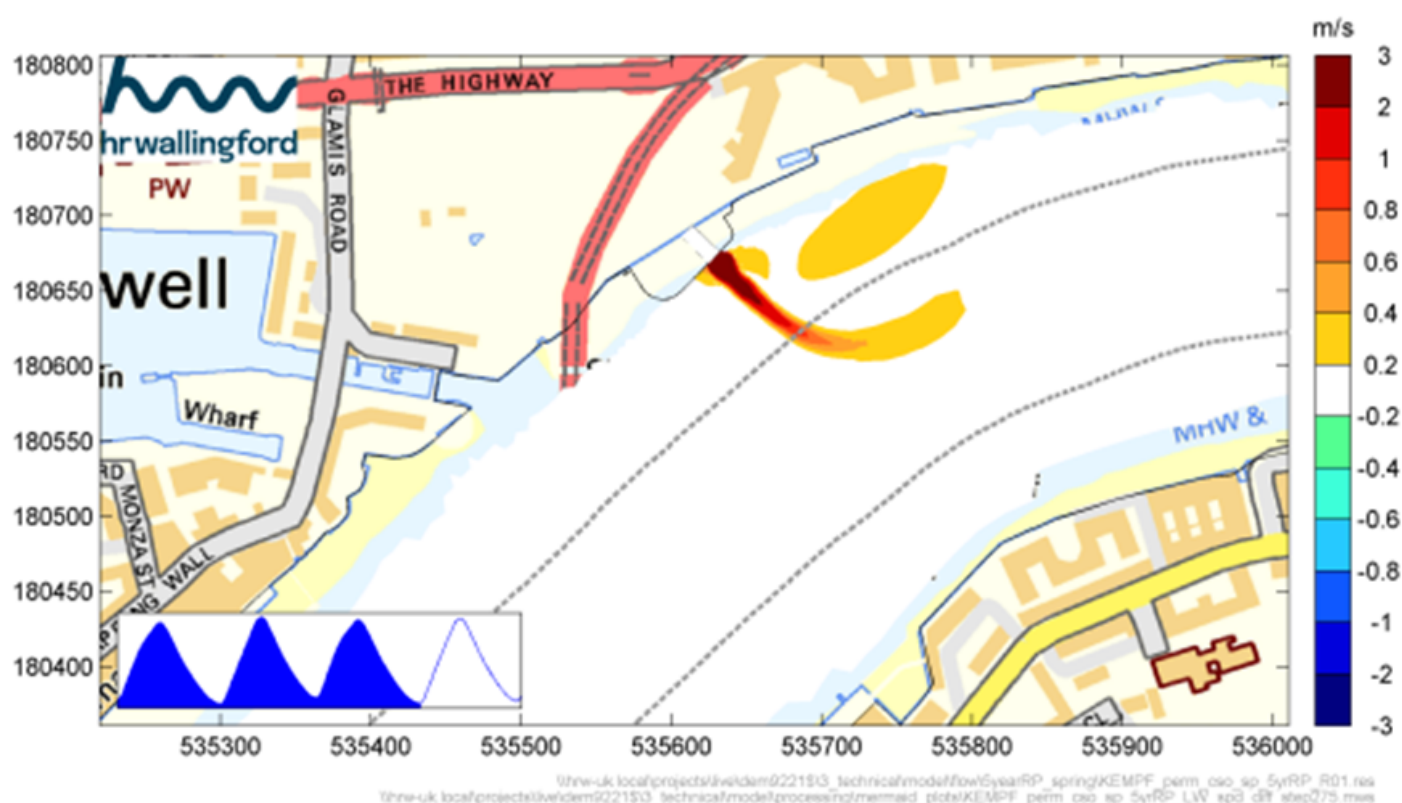


Figure B.150: 5 year RP event spring tide current differences at LW slack

Source: HR Wallingford Ltd

Telephone calls, VHF radio traffic, CCTV and radar traffic images may be recorded in the VTS Centre



M57-24

Cathryn Spain, Senior Harbour Master

Published: 05/08/2024

Expires: 09/01/2026

Lower Pool



King Edward Memorial Park CSO Diversion

NOTICE TO MARINERS

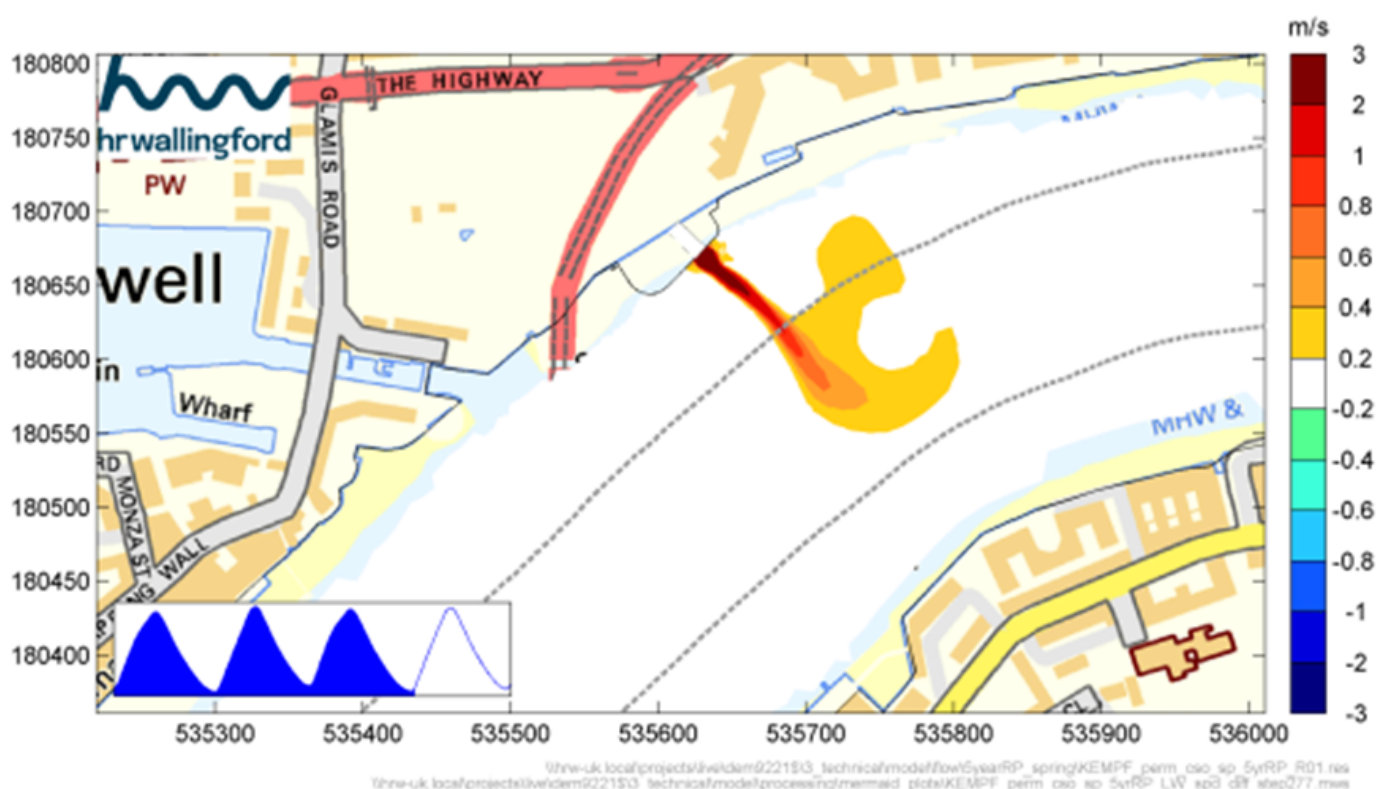


Figure B.152: 5 year RP event spring tide current differences, 20 mins after LW slack

Source: HR Wallingford Ltd

Telephone calls, VHF radio traffic, CCTV and radar traffic images may be recorded in the VTS Centre

Port of London Authority
London River House, Royal Pier Road,
Gravesend, Kent DA12 2BG

This Notice may be amended or withdrawn at any
time. To check the validity of this notice, scan the
QR code or visit pla.co.uk/notices

