

M44-25

Joshua Rebbettes, Deputy Harbour Master

Published: 28/03/2025

Expires: 28/04/2025

Nine Elms Reach



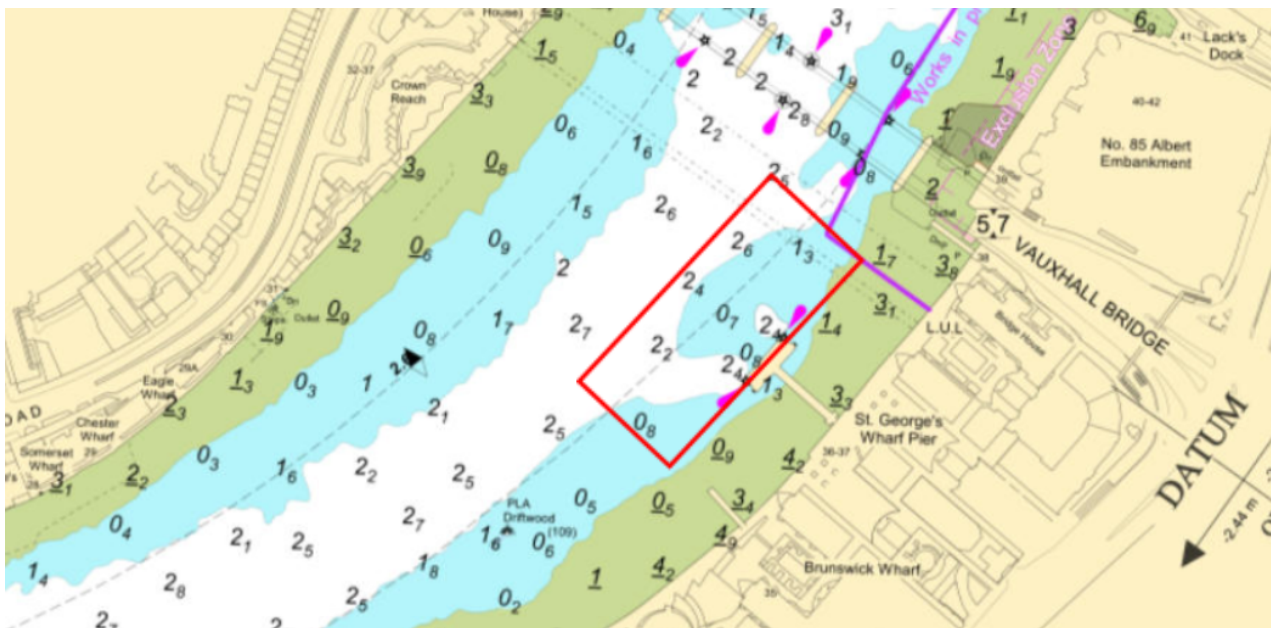
Nine Elms Reach - Dredging Operations St. George's Wharf Pier

NOTICE TO MARINERS

Nine Elms Reach - Dredging Operations St. George's Wharf Pier

Mariners are advised that, on or about **14th April 2025** dredging operations will commence at St. George's Wharf Pier and will last for approximately two weeks.

The general location of works is indicated by the red box, on the chartlet below:



The dredging operations will be carried out by the vessel Assassin using the plough dredge method and may require **navigating against the prevailing direction of traffic flow**. Dredging will be conducted during the ebb tides only.

During dredging operations arch number 4 of Vauxhall Bridge will be closed to navigation as indicated by a smart signal light controlled remotely by London VTS and will display signals with their meanings as

Telephone calls, VHF radio traffic, CCTV and radar traffic images may be recorded in the VTS Centre



M44-25

Joshua Rebbettes, Deputy Harbour Master

Published: 28/03/2025

Expires: 28/04/2025

Nine Elms Reach



Nine Elms Reach - Dredging Operations St. George's Wharf Pier

NOTICE TO MARINERS

described below.



**Closed to
navigation**



**"Permitted"
Vessels Only**



**Open to
Navigation**

At times, Arch No.4 of Vauxhall bridge may be closed to navigation in conjunction with Thames Tideway Project and in accordance with Notice to Mariners [M12-25](#).

Any requirements to proceed with caution or at slow speed, will be made in accordance with the procedures set out in the Port of London Authority's Port Information Guide, under 'London VTS', 'Section 4' with the International Code Flags 'Romeo Yankee' displayed, which are illustrated below.

Telephone calls, VHF radio traffic, CCTV and radar traffic images may be recorded in the VTS Centre



M44-25

Joshua Rebbettes, Deputy Harbour Master

Published: 28/03/2025

Expires: 28/04/2025

Nine Elms Reach



Nine Elms Reach - Dredging Operations St. George's Wharf Pier

NOTICE TO MARINERS



**Romeo
Yankee**

The display of these signals will be in addition to any lights or shapes required under local regulations and the International Regulations for Preventing Collisions at Sea.

Further details will be broadcast by London VTS on VHF Channel 14.

Telephone calls, VHF radio traffic, CCTV and radar traffic images may be recorded in the VTS Centre

