

# M4-25

Sophie Williams, Deputy Harbour Master

Published: 13/01/2025

Expires: 19/05/2025

Kings Reach



## **Kings Reach - Charing Cross Railway Bridge & Golden Jubilee Footbridges - Arch 5 Closure**

### NOTICE TO MARINERS

## **Kings Reach - Charing Cross Railway Bridge & Golden Jubilee Footbridges - Arch 5 Closure**

Mariners are advised that on or about **Saturday 18th January 2025**, contractors will commence bridge refurbishment works on Charing Cross Bridge. These works will be contained to No. 5 arch, which will be closed to navigation throughout. The works are expected to **last until 16th May 2025** and be conducted largely between the hours of 0700 and 1600.

The works will involve the erection of scaffolding within No. 5 arch. To achieve this, the vessel SCHELDONMOND will be positioned within No. 5 arch for up to 5 hours over high water and vacating the arch over low water periods and outside of working hours.

To facilitate these works No. 5 arch of Charing Cross Railway Bridge and the associated Golden Jubilee Footbridges will be closed to navigation. This closure will remain in place 24 hours a day, 7 days a week.

Telephone calls, VHF radio traffic, CCTV and radar traffic images may be recorded in the VTS Centre



# M4-25

Sophie Williams, Deputy Harbour Master

Published: 13/01/2025

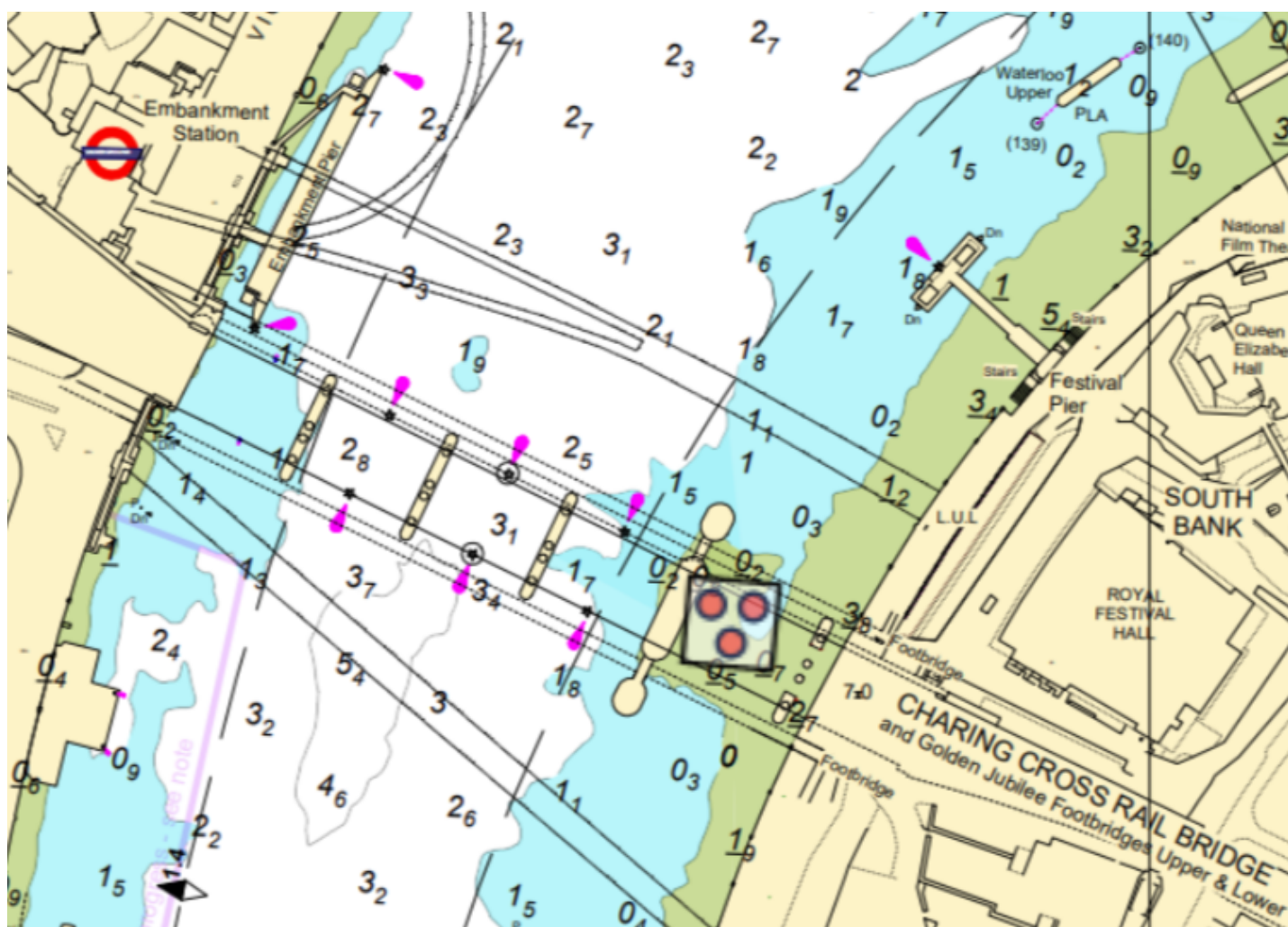
Expires: 19/05/2025

Kings Reach



## Kings Reach - Charing Cross Railway Bridge & Golden Jubilee Footbridges - Arch 5 Closure

### NOTICE TO MARINERS



Arches closed to navigation will be marked in accordance with the Port of London Authority (PLA) Thames Byelaws 2012 as depicted and by night lit with three red lights in a downward triangle.

Telephone calls, VHF radio traffic, CCTV and radar traffic images may be recorded in the VTS Centre

Port of London Authority  
London River House, Royal Pier Road,  
Gravesend, Kent DA12 2BG

This Notice may be amended or withdrawn at any time. To check the validity of this notice, scan the QR code or visit [pla.co.uk/notices](https://pla.co.uk/notices)



# M4-25

Sophie Williams, Deputy Harbour Master

Published: 13/01/2025

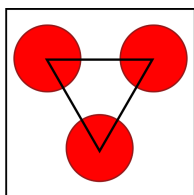
Expires: 19/05/2025

Kings Reach



## Kings Reach - Charing Cross Railway Bridge & Golden Jubilee Footbridges - Arch 5 Closure

### NOTICE TO MARINERS



### Closed to navigation

A safety boat will be in attendance during working hours and will maintain a listening watch on VHF Channel 14. River users should be aware that the safety boat will at times, be crossing between No. 5 arch and Embankment Pier.

On occasion, works may take place outside of standard hours, for example between the hours of 2000 Saturday 18th January 2025 and 0600 Sunday 19th January for initial works.

Further details will be broadcast by **London VTS** on VHF Channel 14.

Telephone calls, VHF radio traffic, CCTV and radar traffic images may be recorded in the VTS Centre

Port of London Authority  
London River House, Royal Pier Road,  
Gravesend, Kent DA12 2BG

This Notice may be amended or withdrawn at any time. To check the validity of this notice, scan the QR code or visit [pla.co.uk/notices](https://pla.co.uk/notices)

