

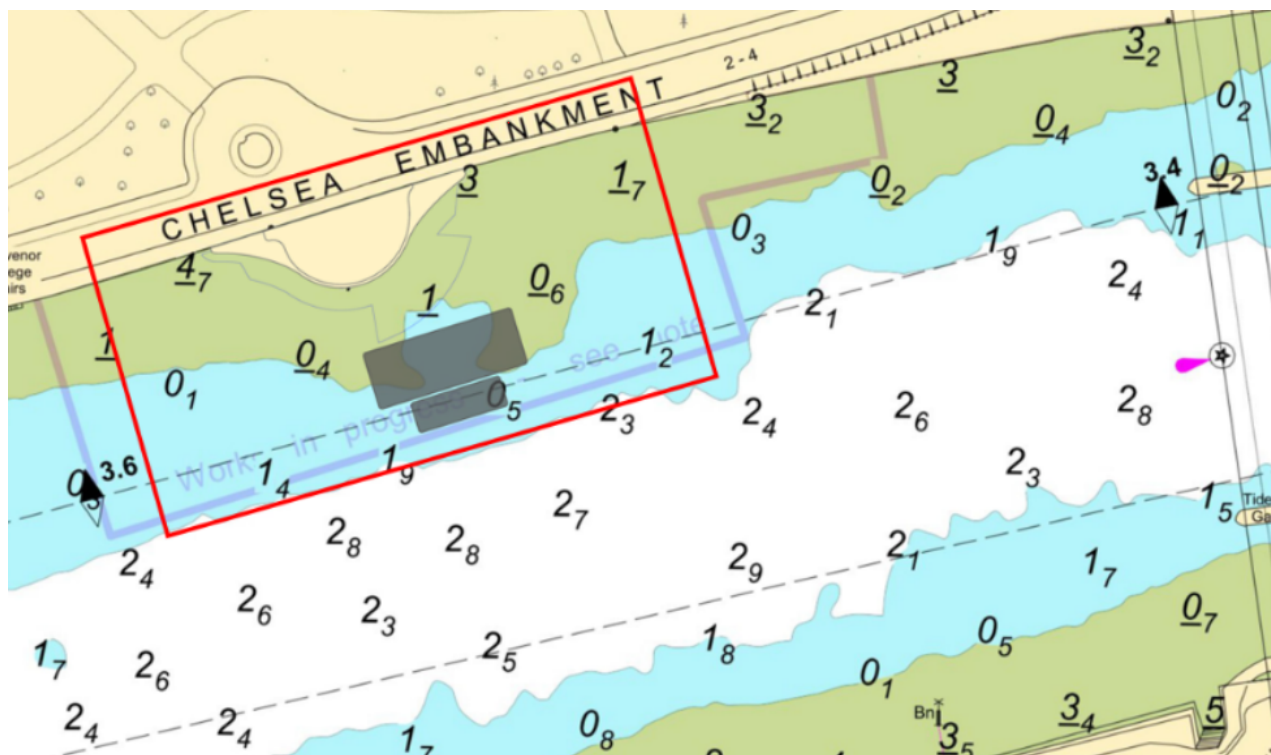
Chelsea Reach - Thames Tideway Tunnel Chelsea Embankment Foreshore Construction Works

NOTICE TO MARINERS

Chelsea Reach - Thames Tideway Tunnel Chelsea Embankment Foreshore Construction Works

Mariners are advised that from 21st February 2025 Tideway Tunnel contractors working on Chelsea Embankment Foreshore site will start work to remove the remaining cofferdam sheet piles to the front of the site and install scour protection.

The location of works and approximate location of the barges are shown on the chartlet below:



Telephone calls, VHF radio traffic, CCTV and radar traffic images may be recorded in the VTS Centre



M22-25

Lyn Kindlen-Funnell, Harbour Master

Published: 18/02/2025

Expires: 10/06/2025

Chelsea Reach



Chelsea Reach - Thames Tideway Tunnel Chelsea Embankment Foreshore Construction Works

NOTICE TO MARINERS

No vessels, other than those engaged in the works or who have permitted vessel status, shall enter the navigation exclusion zone.

The works which will include pile extraction, dredging, diving, rock placement and back filling operations to install scour protection, will be carried out using a spudded barge, supply barges and tugs. The vessels will maintain a listening watch on VHF channel 14.

At times, requests for vessels to proceed with caution or pass at slow speed will be made by London VTS on VHF ch.14, in accordance with the Port of London Authority's [Port Information Guide](#), under 'London VTS', section 4. International Code Flags 'Romeo Yankee (RY)' will be displayed accordingly.



**Romeo
Yankee**

In addition, if diving operations are underway, International Code Flag 'Alpha (A)' and a red flag in accordance with Byelaw 33 will be displayed as appropriate:

Telephone calls, VHF radio traffic, CCTV and radar traffic images may be recorded in the VTS Centre



M22-25

Lyn Kindlen-Funnell, Harbour Master

Published: 18/02/2025

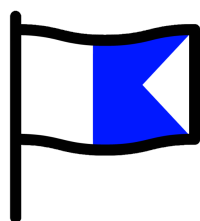
Expires: 10/06/2025

Chelsea Reach

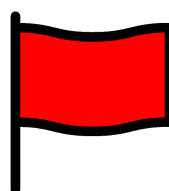


Chelsea Reach - Thames Tideway Tunnel Chelsea Embankment Foreshore Construction Works

NOTICE TO MARINERS



Alpha



Diver point of
entry in water

Vessels are requested to be mindful of the nature of the works, to be aware of vessels proceeding to and from the works and of their wash when passing the works.

Further details will be broadcast by London VTS on VHF Channel 14.

Telephone calls, VHF radio traffic, CCTV and radar traffic images may be recorded in the VTS Centre

