

M120-25

Sophie Williams, Deputy Harbour Master

Published: 18/09/2025

Expires: 27/09/2025

Kings Reach



Kings Reach - RNLI BROW REPLACEMENT WORKS & WATERLOO bridge arch closure

NOTICE TO MARINERS

Kings Reach - RNLI BROW REPLACEMENT WORKS & WATERLOO bridge arch closure

Mariners are advised that on or about 22nd September 2025 contractors will commence brow replacement works at Tower RNLI station. These works are expected to last 5 days.

To facilitate these works, the crane barge GPS BOXER will be positioned on Tower RNLI. Lifting operations will be undertaken to remove the old brow, and fit the new one.

Crane Barge

The crane barge *GPS BOXER* will be positioned alongside Tower RNLI throughout the works.

During mooring/unmooring operations, the tug will temporarily encroach up to 6 metres into the authorised channel, until GPS BOXER is spudded down. Ad-hoc Local Traffic Control may be implemented by PLA Harbour Service Launch if required.

Once in position, *GPS BOXER* will spud down for the duration of works, moored outside but near the authorised channel edge.

Vessels should navigate with caution in the area.

Telephone calls, VHF radio traffic, CCTV and radar traffic images may be recorded in the VTS Centre



M120-25

Sophie Williams, Deputy Harbour Master

Published: 18/09/2025

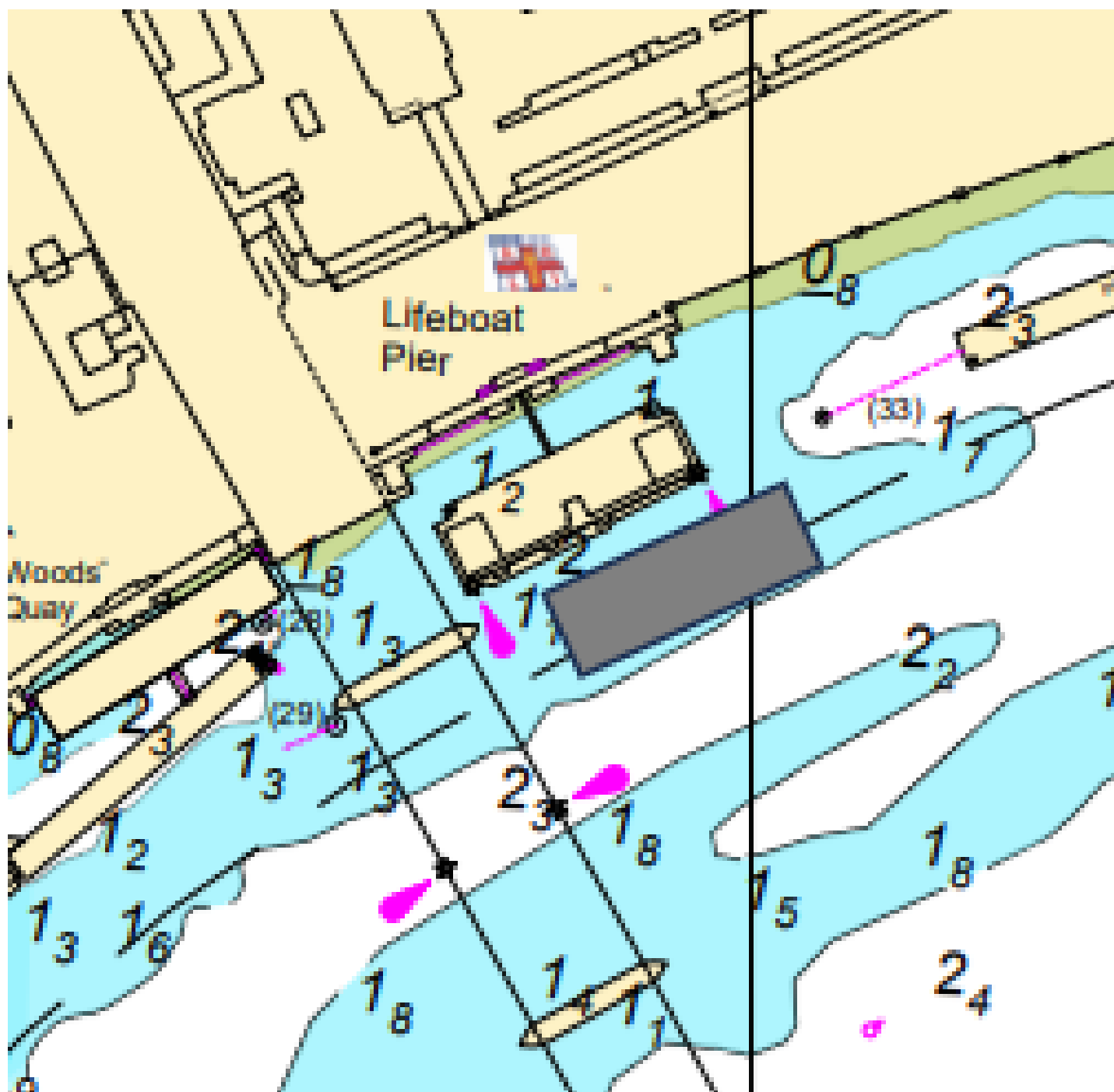
Expires: 27/09/2025

Kings Reach



Kings Reach - RNLI BROW REPLACEMENT WORKS & WATERLOO bridge arch closure

NOTICE TO MARINERS



Telephone calls, VHF radio traffic, CCTV and radar traffic images may be recorded in the VTS Centre

Port of London Authority
London River House, Royal Pier Road,
Gravesend, Kent DA12 2BG

This Notice may be amended or withdrawn at any
time. To check the validity of this notice, scan the
QR code or visit pla.co.uk/notices



M120-25

Sophie Williams, Deputy Harbour Master
Published: 18/09/2025
Expires: 27/09/2025
Kings Reach



Kings Reach - RNLI BROW REPLACEMENT WORKS & WATERLOO bridge arch closure

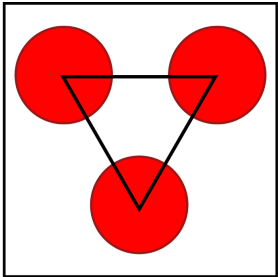
NOTICE TO MARINERS

Lifting Operations

To facilitate lifting operations to remove the old brow and fit the new brow, at times **No. 2 arch of Waterloo Bridge will be closed to navigation**. These closures are expected to last no more than 2 hours, and take place within two of the lifting windows detailed below:

Arch	Date	Time	Navigational Information
Planned Lifting Operations			
2	23rd September	0600 - 0730	Closed to Navigation - Local Traffic Control
2	24th September	0600 - 0730	Closed to Navigation - Local Traffic Control
Contingency lift Periods - If required. Detail will be broadcast by London VTS			
2	25th September	0530 - 0730	Closed to Navigation - Local Traffic Control
2	25th September	1200 - 1300	Closed to Navigation - Local Traffic Control

Arches closed to navigation will be marked in accordance with the Port of London Authority (PLA) Thames Byelaws 2012 as depicted and by night lit with three red lights in a downward triangle.



Closed to navigation

During the closure of arch 2, **Local Traffic Control** will be undertaken from a PLA Harbour Service Launch in the vicinity of Waterloo Bridge. All vessels intending to navigate between Charing Cross Rail Bridge and Telephone calls, VHF radio traffic, CCTV and radar traffic images may be recorded in the VTS Centre



M120-25

Sophie Williams, Deputy Harbour Master

Published: 18/09/2025

Expires: 27/09/2025

Kings Reach



Kings Reach - RNLI BROW REPLACEMENT WORKS & WATERLOO bridge arch closure

NOTICE TO MARINERS

Blackfriars Bridges are to call '**WATERLOO CONTROL**' on **VHF Channel 14** as follows:

- Inbound at Blackfriars Bridge
- Outbound at Charing Cross Rail Bridge
- Prior to leaving a berth or mooring between Charing Cross Rail Bridge and Blackfriars Bridges

Requirements to proceed with caution or at slow speed, will be made in accordance with the procedures set out in the Port of London Authority's Port Information Guide, under 'London VTS', 'Section 4' with the International Code Flags 'Romeo Yankee' displayed, which are illustrated below.



Romeo Yankee

Vessels should navigate with caution when passing the works, and with full regard to the effects of their wash.

Further details will be broadcast by **London VTS** on VHF Channel 14.

Telephone calls, VHF radio traffic, CCTV and radar traffic images may be recorded in the VTS Centre

