

## Upper Pool - Chambers Wharf - Cofferdam Deconstruction

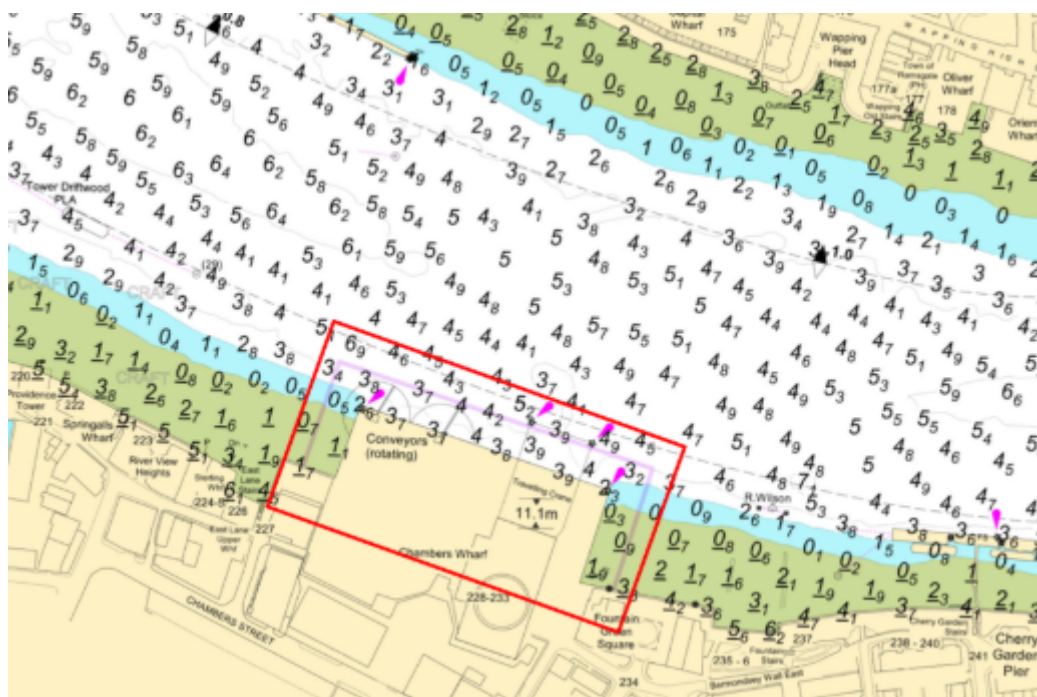
### NOTICE TO MARINERS

## Upper Pool - Chambers Wharf - Cofferdam Deconstruction

This Notice supersedes and replaces M60-25, which is hereby cancelled.

Tideway Tunnel contractors are continuing with the deconstruction of the Chambers Wharf site cofferdam. The works involve barges which at times will be moored outside of the site boundary, as marked in magenta on PLA charts.

The below chartlet shows the approximate area of the works on the river (in red).



Telephone calls, VHF radio traffic, CCTV and radar traffic images may be recorded in the VTS Centre



# M105-25

Lyn Kindlen-Funnell, Harbour Master

Published: 31/07/2025

Expires: 30/09/2025

Upper Pool

OF

## Upper Pool - Chambers Wharf - Cofferdam Deconstruction

### NOTICE TO MARINERS

Works involve the use of the GPS 601 barge, spudded down on the outside of the cofferdam. Supply barges will at times be moored alongside the cofferdam and alongside the GPS 601 barge which means that they protrude beyond the works area, shown in magenta on the chart. This will only happen for short periods during daylight hours, never overnight and barges will not protrude into the navigation channel.

Supply barges will be manoeuvred using the tugs SWS ENDURANCE, HANS and SUFFOLK.

The inner part of the cofferdam has now been removed leaving the foreshore exposed at low water. All river users are reminded that this is an active works site with dangers which may not be immediately visible and entry is prohibited at all times. Barriers have been installed along the foreshore and will be buoyed at high water. Mariners in smaller craft are also reminded not to travel between the cofferdam under deconstruction and the river wall, this remains a work site with potential hidden dangers below the waterline. All traffic must pass to the north of the site keeping a safe distance off the working vessels.

Passing vessels are requested to be mindful of the nature of the works, including the use of cranes, and to be aware of vessels proceeding to and from the works.

All works vessels will maintain a listening watch of London VTS on VHF Channel **14**.

Telephone calls, VHF radio traffic, CCTV and radar traffic images may be recorded in the VTS Centre

