

L61-25

Lyn Kindlen-Funnell, Harbour Master

Published: 08/08/2025

Expires: 31/08/2025

Sea Reach

OF

Sea Reach - London Gateway Port - Berth 5 Quay Wall Piling Operations

NOTICE TO MARINERS

Sea Reach - London Gateway Port - Berth 5 Quay Wall Piling Operations

On or around the **19th August 2025** plant will start to mobilise in readiness for the London Gateway Port Berth 5 extension works with Marine Piling works due to start soon after.

A bubble curtain will be deployed to mitigate noise from piling works which will commence on the eastern end of berth 5 adjacent to Berth 4. This will form a new retaining wall as part of the 430m long extension to the west.

Telephone calls, VHF radio traffic, CCTV and radar traffic images may be recorded in the VTS Centre

Port of London Authority
London River House, Royal Pier Road,
Gravesend, Kent DA12 2BG

This Notice may be amended or withdrawn at any time. To check the validity of this notice, scan the QR code or visit pla.co.uk/notices



L61-25

Lyn Kindlen-Funnell, Harbour Master

Published: 08/08/2025

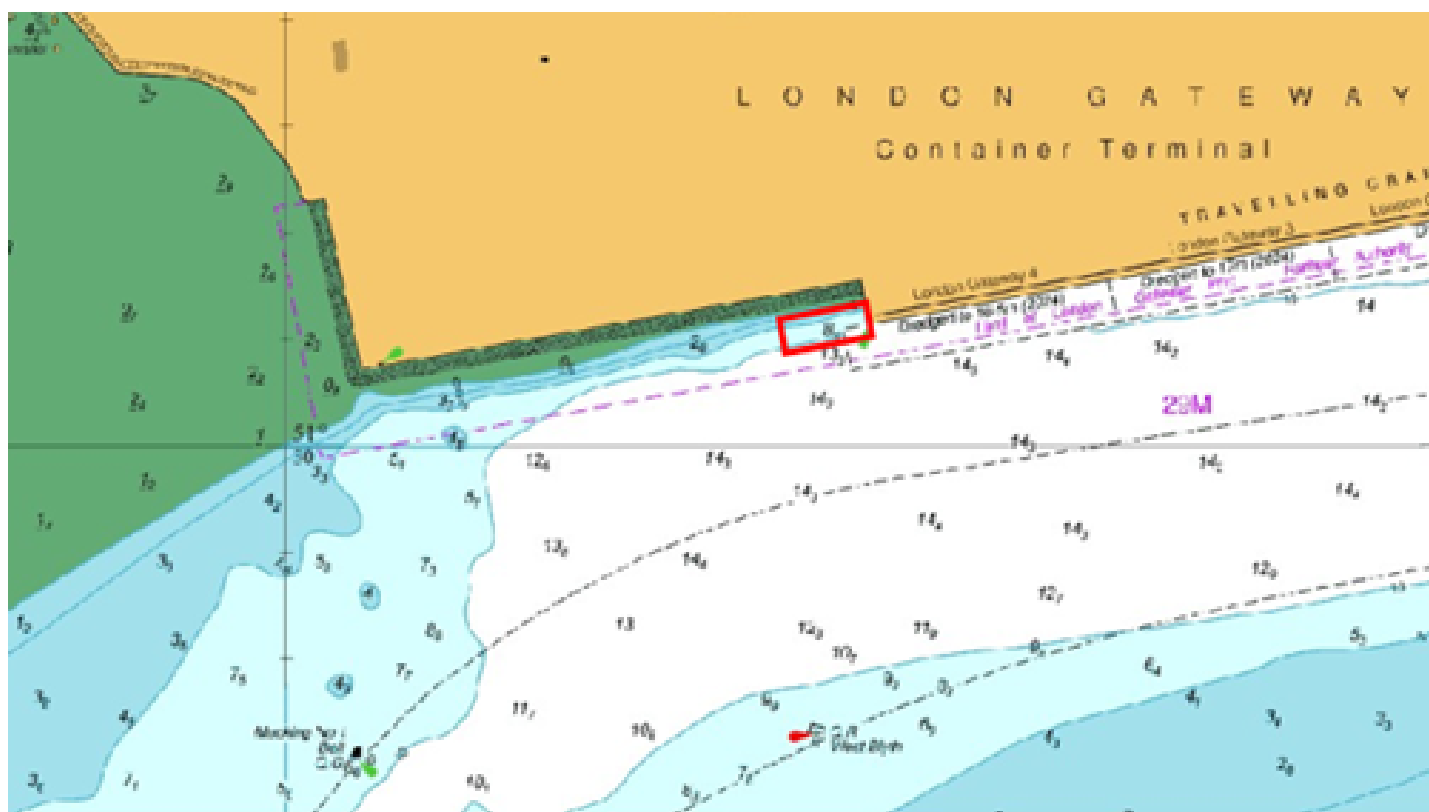
Expires: 31/08/2025

Sea Reach

OF

Sea Reach - London Gateway Port - Berth 5 Quay Wall Piling Operations

NOTICE TO MARINERS



The works will be utilising the **“Neptune 585 Eurobarge”**, a 75m x 25m floating barge equipped with a 750t crawler crane, to assist with lifting operations. A second flat top delivery barge, the **“Neptune NP674 Barge”** which is 60m x 20m, will be utilised to assist with the storage and delivery of materials next to the crane barge. All barge movements will be carried out by Multi-cat vessel **“Felix”** or similar. A safety boat the **“WSB Resolute”** will also be in attendance.

A 75m exclusion zone is to be maintained from vessels manoeuvring on and off berth 4 by delivery and support barges (during manoeuvring assisting tugs are permitted to be within the 75m exclusion zone). When a vessel is suitably moored up alongside on Berth 4, delivery / support barges can operate within the 75m of the vessels final berthed position, if required.

Works are expected to last until August 2026.

All vessels involved with the works will maintain a continuous listening watch on **VHF Channel 68**.

Telephone calls, VHF radio traffic, CCTV and radar traffic images may be recorded in the VTS Centre

