

L31-25

Michael Spice, Deputy Harbour Master

Published: 17/04/2025

Expires: 25/04/2025

Gravesend Reach



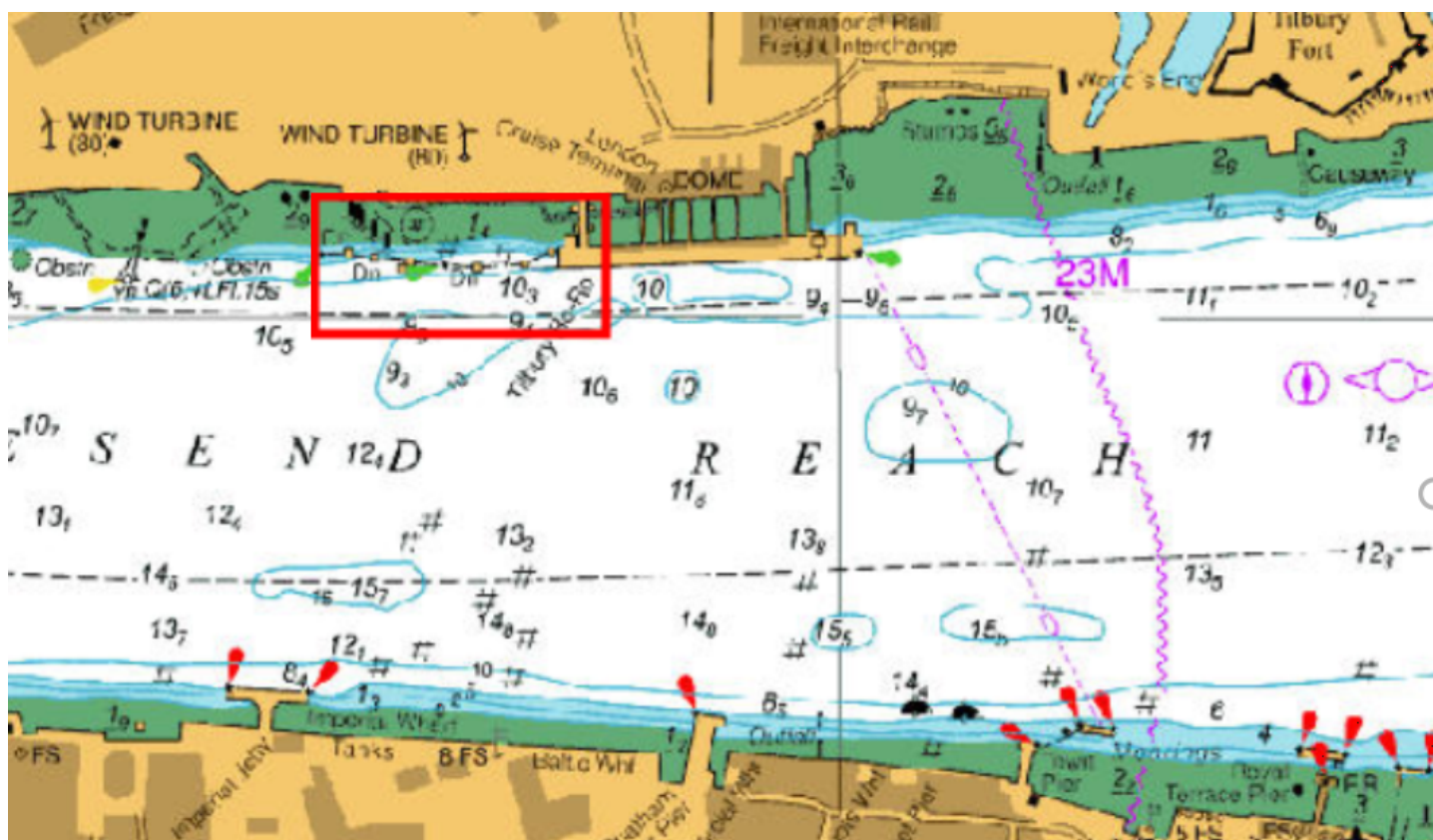
Gravesend Reach - Tilbury Ro-Ro - Lifting Operations

NOTICE TO MARINERS

Gravesend Reach - Tilbury Ro-Ro - Lifting Operations

Mariners are advised that on or about **Monday 21st April** contractors instructed by the Port of Tilbury London Ltd. will commence construction works at Tilbury Ro-Ro, Gravesend Reach. Works are expected to take no longer than 7 days.

The general location of the works is indicated by the red box on the chartlet below:



Telephone calls, VHF radio traffic, CCTV and radar traffic images may be recorded in the VTS Centre



L31-25

Michael Spice, Deputy Harbour Master

Published: 17/04/2025

Expires: 25/04/2025

Gravesend Reach



Gravesend Reach - Tilbury Ro-Ro - Lifting Operations

NOTICE TO MARINERS

These works will involve the Jack Up Barge "Haven Searider" and workboats "Haven Supporter" and "Delphini 1". Works will include lifting and rigging operations.

Requirements to proceed with caution or at slow speed will be made in accordance with the procedures set out in the Port of London Authority's Port Information Guide, with the International Code Flags 'Romeo Yankee (RY)', which are illustrated here, displayed.



The display of these signals will be in addition to any lights or shapes required under local regulations and the International Regulations for Preventing Collisions at Sea.

Further details will be broadcast as needed by **London VTS** on VHF channels **68**.

Telephone calls, VHF radio traffic, CCTV and radar traffic images may be recorded in the VTS Centre

