

Thames Estuary

SUNK / LONG SAND HEAD

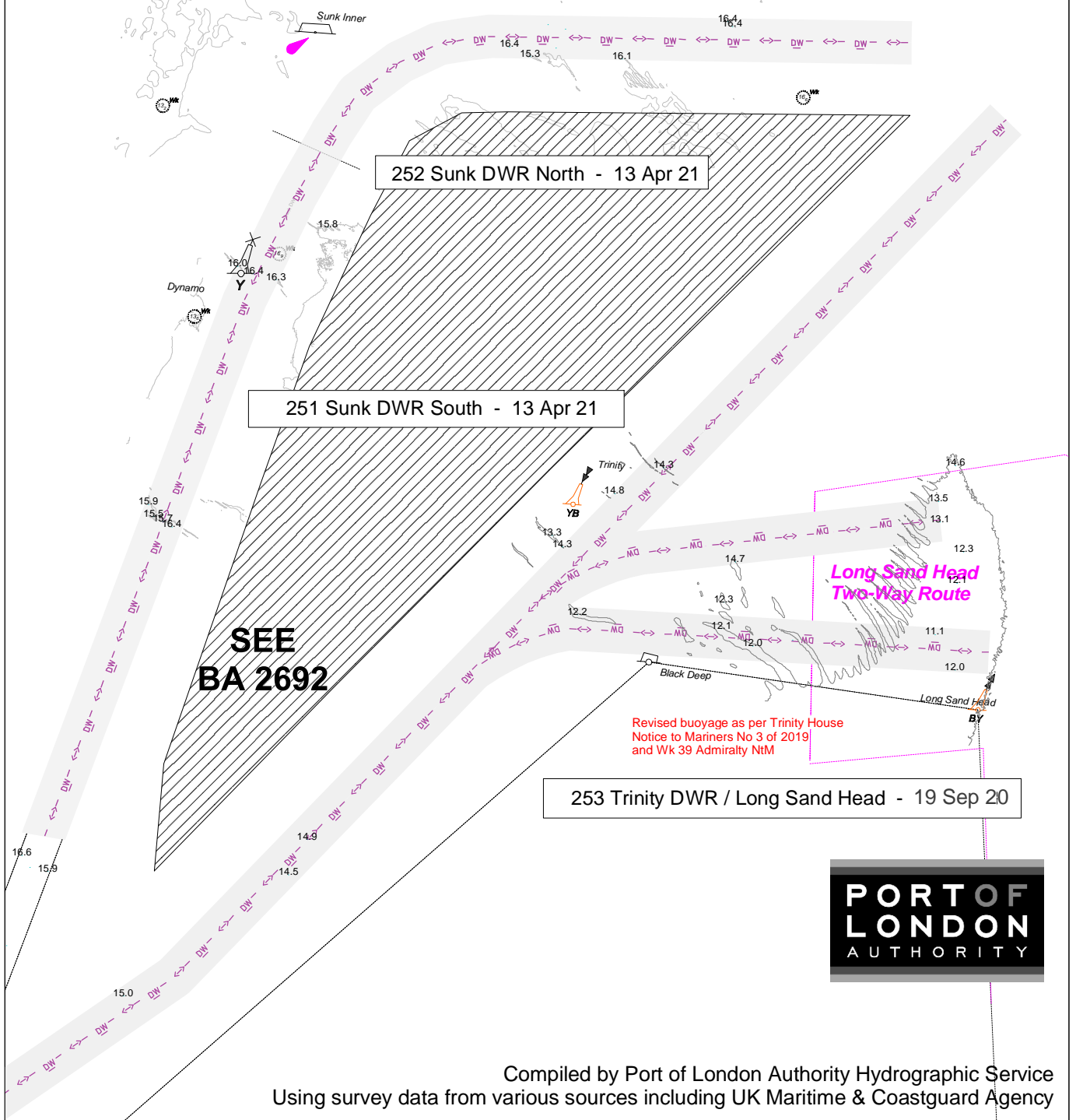
Skeleton mini plots showing significant soundings < 16.5m (Sunk DWR), < 15.0m (Trinity DWR) and contours 16.5m (Sunk DWR) 15.0m (Trinity DWR) taken from larger scale survey of dates shown.

Outside marked fairway, depths are shown within 1 cable either side of charted deep water route.

Soundings in Metres & Tenths below local PLA datum

SCALE 1:50000

DECIMAL POINT INDICATES POSITION OF SOUNDING



Compiled by Port of London Authority Hydrographic Service
Using survey data from various sources including UK Maritime & Coastguard Agency