

NOTICE TO MARINERS U10 of 2022

CORNEY REACH DUKE MEADOWS FOOTBRIDGE INSTALLATION – LOCAL TRAFFIC CONTROL (TOWAGE OPERATIONS)

This notice is in addition to Notice to Mariners [U6 of 2022](#)

Construction works near completion of Dukes Meadows Footbridge. All river users are to be aware of the following:

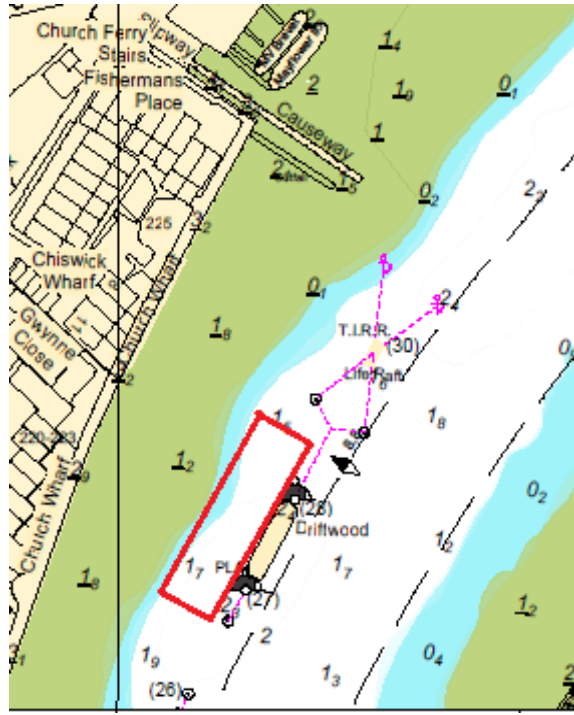
Tug FELIX will be conducting towage operations transporting a 42m section of the new Duke Meadows footbridge from Tilbury dock to Barnes Rail Bridge.

During the installation in No.1 Arch Barnes rail, requests to proceed with caution or at slow speed will be made in accordance with the procedure set out in the Port of London Authority's [Port Information Guide](#), under 'London VTS, 'Paragraph 4'.

Date	Approx. times	Location	Navigational Information
Saturday 23 rd July 2022	02:00-14:00	Tilbury Docks To Chiswick	Barge towed by Thames Craft FELIX Harbour launch escort from Putney Bridge Inbound
Sunday 24 th July 2022	07:00-08:30	Chiswick To Barnes Rail	*Local traffic control /River closure as required
Sunday 24 th July 2022	08:30-13:30	Barnes Rail	Pass with caution required
Sunday 24 th July 2022	13:30-15:00	Barnes Rail To Chiswick	*Local traffic control /River closure as required
Monday 25 th July 2022	13:00-23:59	Barnes Rail To Tilbury	* Local traffic control / River closure as required - Outbound Harbour launch to escort to Putney Bridge
All times are subject to change due to works being tide dependent.			

The barge and vessels will be moored overnight at the PLA Driftwood mooring above Chiswick Ait. Due to the overall dimensions of the barge, all craft are not permitted to navigate North of the moorings. These vessels will be moored within the mooring box area as shown on the chart extract overleaf.

--- This notice continues on the next page ---



*To support these operations a Port of London Authority (PLA) Harbour Service Launch will be in the vicinity to provide Local Traffic Control when required.

When Local Traffic Control is established, the launches will display flashing blue lights. All vessels navigating in the area are to contact The PLA Harbour Service launch on Call Sign prefix "Thames Patrol" for traffic clearance.

Further details will be broadcast by **London VTS** on **VHF Channel 14**.

20/07/2022

Port of London Authority
London River House, Royal Pier Road,
Gravesend, Kent DA12 2BG

ADAM MONTGOMERY
Assistant Harbour Master

EXPIRY DATE: 31/08/2022

TO RECEIVE FUTURE NOTICES TO MARINERS BY E-MAIL,
PLEASE REGISTER VIA OUR WEBSITE www.pla.co.uk

Telephone calls, VHF radio traffic, CCTV and radar traffic images may be recorded in the VTS Centres at Gravesend and Woolwich

All Current Notices to Mariners can be found here - <http://www.pla.co.uk/ntm>