



Priority Action 2: Water Quality

Katherine Riggs

Director of Thames Vision

Priority Action 2: Water Quality

Improve water quality by a range of measures including reduced litter in the river





**Estuary Edges
Greening the Riverside**

Jo Heisse

Environment Agency

Why green the riverside?



Challenges

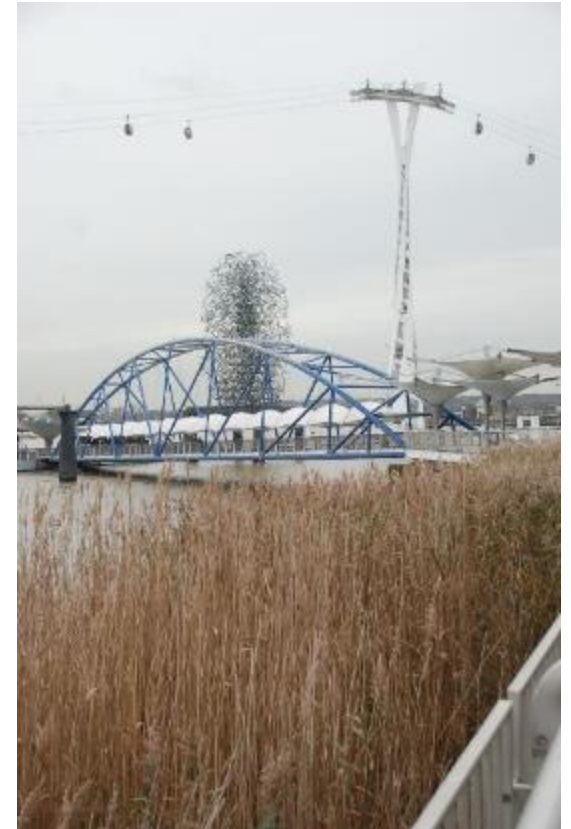


Estuary Edges

- Working with hard engineering
- Diversity
- Green infrastructure



Greenwich Peninsula





Deptford Creek

Large areas of scour damage behind existing wall leaving voids below the existing raised concrete walkway. Risk of structural failure

Naturally colonised biodiversity



Existing capping beam

Existing raised concrete walkway

Existing R.C. wall

Brick facing

Gravel/rubble

Tie rod

Existing wooden boards in poor condition

Existing concrete piles

Existing timber piles to be cut off at bed level

Foreshore varies: +1.65m to 0.65m

Alluvium

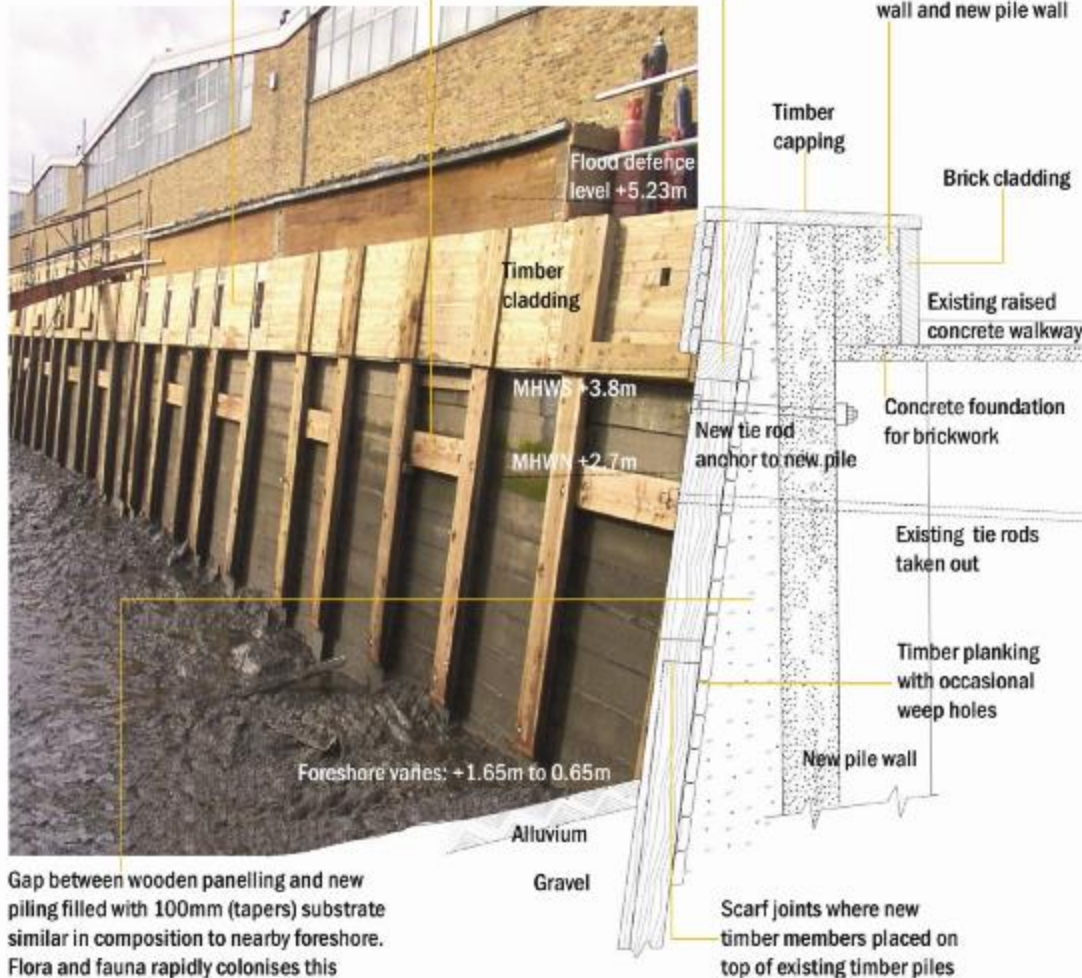
Gravel

In places, ledge is created and filled with sand to provide location for Kingfishers and Sand Martins to burrow

Existing timberwork refurbished with softwood timber

Previous timber capping refixed at lower level

Infill concrete behind timber cladding and between existing timber wall and new pile wall



Gap between wooden panelling and new piling filled with 100mm (tapers) substrate similar in composition to nearby foreshore. Flora and fauna rapidly colonises this



Wandsworth Riverside Quarter



Wandsworth Riverside Quarter





Thank You



Spill Response and Debris Clearance

Peter Steen

Director of Marine Operations

Pollution Response



TOSCA

- Oil Pollution Preparedness, Response and Co-operation Convention(OPRC) adopted by IMO in 1990.
- The PLA together with local industry established Thames Oil Spill Clearance Association (TOSCA) in 1992 as a 24 hour 7 days a week marine oil spill response unit, in compliance with the OPRC and UK legislation.



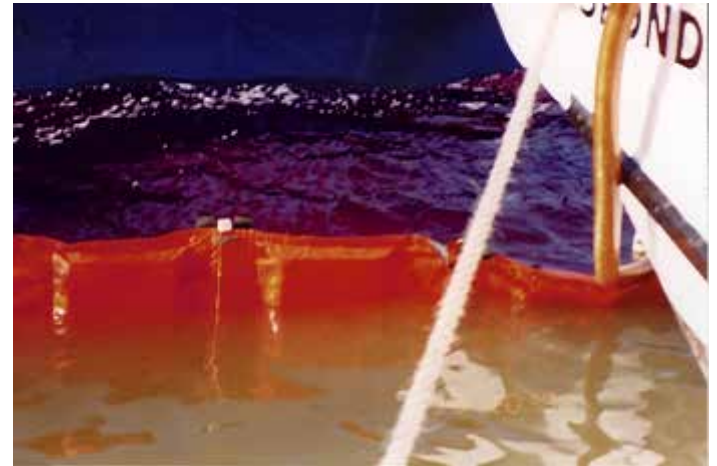
TOSCA Resources

- Two dedicated vessels Recover and Respond.
- Equipment including booms, skimmers and pumps stored on a barge.
- TOSCA is managed and operated by the PLA but funded by a levy on oil and mineral cargos, as well as contributions from conservancy dues to cover bunker fuel.



TOSCA

- We train all of our marine services personnel to make sure they are familiar with the equipment and the best way of tackling the recovery operation as there are always difficulties with getting to oil.



Driftwood

- The Driftwood Service originally cleared timber from the Thames foreshores.
- Nowadays we clear more plastic than wood as well as the odd shopping trolley, bicycle, traffic cone, duck or car!
- To collect floating debris we operate two multi-purpose vessels supported by a tug and a fleet of barges.
- Foreshores are cleared in conjunction with Thames21 who organise an army of volunteers.



Driftwood Resources

- DW II and DW III collect litter from 8 passive debris collectors moored in central London.
- Debris is stored in barges before being taken down river to a recycling centre.
- Impulse



Driftwood

- The PLA works closely with Thames21 who organise volunteers to clear debris from the foreshore.
- The PLA lays and recovers baskets and disposes of whatever is collected, which is up to 500 tonnes a year.





Thank You