

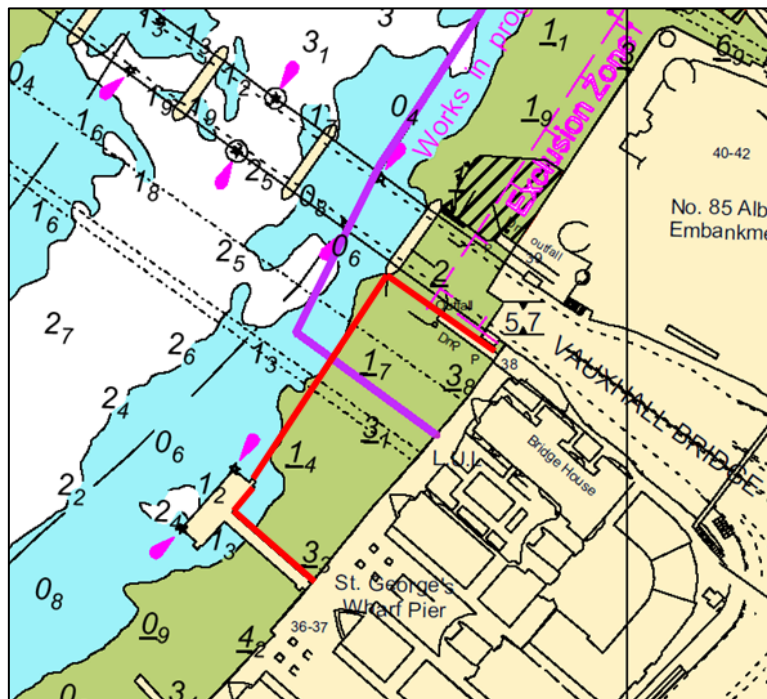
## NOTICE TO MARINERS M71 of 2019

### NINE ELMS REACH

## ST GEORGES WHARF EXCLUSION ZONE

On or about the 14<sup>th</sup> November 2019 contractors working on the Tideway Tunnel Project will position plant upriver of no 5 arch of Vauxhall Bridge which remains closed. The works are expected to take up to 10 months.

Please see the chartlet below depicting the location of the upriver construction works between St Georges Wharf Pier and Vauxhall Bridge.



No vessels other than those engaged in the works shall enter the navigation exclusion zone depicted by the red lines on the chartlet. A closed arch sign will also be exhibited on the upstream brow of St Georges Wharf Pier.

At times RY flags will be exhibited in conjunction with “proceed with caution / slow down requests” in VTS broadcasts particularly as barges are grounding or fleeing.

Vessels are requested to be mindful of the nature of the works, be aware of vessels proceeding to and from the works and their wash when passing the works.

Arches closed to navigation will normally be marked in accordance with the Port of London Authority Thames Byelaws 2012 namely:

- By day, three red discs 0.6 metres in diameter at the points of an equilateral triangle with the apex downwards and the base horizontal
- By night, three red lights in similar positions to the discs displayed by day.

The special signal light described in M25 of 2019 at No 4 arch of Vauxhall Bridge will remain in use.

Further details will be broadcast by London VTS on VHF Channel 14.

**13 November  
2023**

Port of London Authority  
London River House, Royal Pier Road,  
Gravesend, Kent DA12 2BG

**BOB BAKER  
CHIEF HARBOUR MASTER**



TO RECEIVE FUTURE NOTICES TO MARINERS BY **E-MAIL**,  
PLEASE REGISTER VIA OUR WEBSITE [www.pla.co.uk](http://www.pla.co.uk)  
**Telephone calls, VHF radio traffic, CCTV and radar traffic images may  
be recorded in the VTS Centres at Gravesend and Woolwich**  
**All Current Notices to Mariners can be found here -**  
**<http://www.pla.co.uk/Safety/Regulations-and-Guidance/Notices-to-Mariners/Notices-to-Mariners>**

