

NOTICE TO MARINERS M45 of 2021

LAMBETH REACH DIVING OPERATIONS

Mariners are advised that diving operations are expected to take place daily between 08th and 12th November 2021 on the Shell Centre intake and discharge sumps, located, respectively, beneath and immediately downriver of Waterloo Millennium Pier.

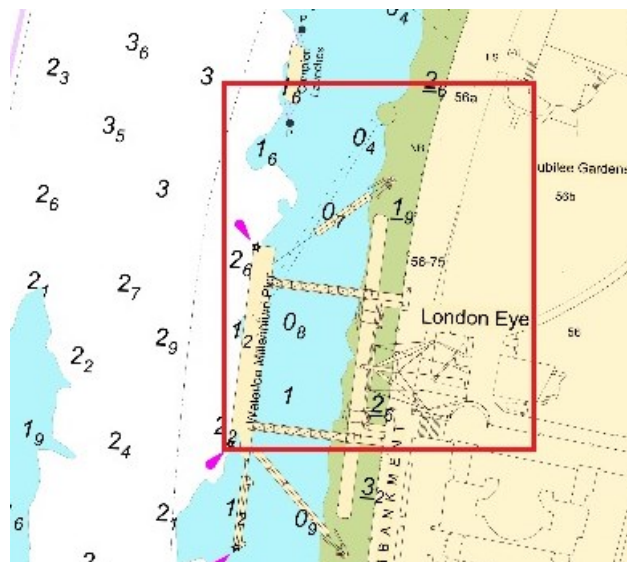
Diving operations will be conducted from vessel CHILLI DOG, and will be timed around low water periods. Diving on the intake sump, located beneath the pier itself, is planned to take place only between 2100 and 0300 during the specified period.

Requests for vessels to proceed with caution or pass at slow speed will be made by London VTS on VHF ch.14, in accordance with the PLA Port Information Guide, under "London VTS", section 4. Any further details will be broadcast by London VTS.

Vessel CHILLI DOG should display International Code Flags 'Romeo Yankee (RY)' and 'Alpha (A)' as appropriate:



The chartlet below shows the location of the operations: -



David Allsop
Assistant Harbour Master

04th November 2021

Port of London Authority
London River House, Royal Pier Road,
Gravesend, Kent DA12 2BG

EXPIRY DATE: 13/11/2021

TO RECEIVE FUTURE NOTICES TO MARINERS BY **E-MAIL**,

PLEASE REGISTER VIA OUR WEBSITE www.pla.co.uk

Telephone calls, VHF radio traffic, CCTV and radar traffic images may be recorded in the VTS Centres at Gravesend and Woolwich

All Current Notices to Mariners can be found here - <http://www.pla.co.uk/Safety/Regulations-and-Guidance/Notices-to-Mariners/Notices-to-Mariners>