

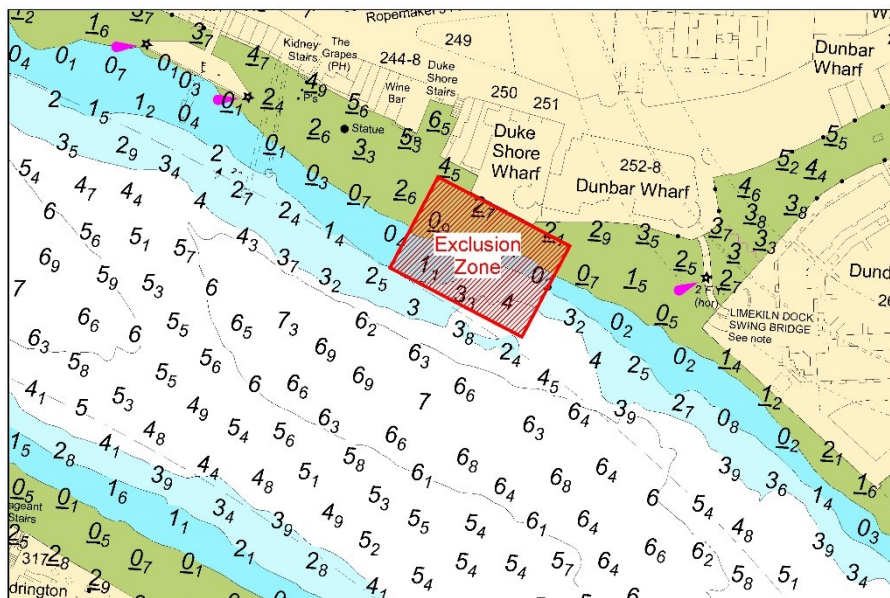
## NOTICE TO MARINERS M24 of 2020

# LIMEHOUSE REACH DUKE SHORE WHARF TEMPORARY WORKS REMOVAL

*This Notice replaces M13 of 2020*

On **18<sup>th</sup> May 2020** contractors commenced works on behalf of the Environment Agency to undertake the removal of the temporary structures at Duke Shore Wharf. The crane barge **NEPTUNE** will continue to be moored on spud legs and positioned outside the Authorised Channel.

The chartlet below depicts the location of the works and the limits of the navigation exclusion zone defined by the red boxed area. Only vessels engaged in the works may enter the exclusion zone. It is expected the works will take approximately another six weeks.



Workboat **DIVECO5** will be in attendance to support the marine operations, maintaining a listening watch to London VTS.



London VTS will broadcast requests for vessels to “proceed with caution” or “proceed at slow speed”, as described in Permanent Notices to Mariners 4 of 2014 as required by the works. International Code Flags “Romeo Yankee” will be displayed when this is in effect.

Further details will be broadcast by London VTS on VHF Channel 14.

**23 July 2020**

Port of London Authority  
London River House, Royal Pier Road,  
Gravesend, Kent DA12 2BG

**Sarah Macleod**  
Acting Harbour Master  
(Upper)

 <p>CERTIFIED ISO 9001 · ISO 14001 OHSAS 18001</p>	<p>EXPIRY DATE: 28<sup>th</sup> September 2020 TO RECEIVE FUTURE NOTICES TO MARINERS BY <b>E-MAIL</b>, PLEASE REGISTER VIA OUR WEBSITE <a href="http://www.pla.co.uk">www.pla.co.uk</a> <b>Telephone calls, VHF radio traffic, CCTV and radar traffic images may be recorded in the VTS Centres at Gravesend and Woolwich</b> All Current Notices to Mariners can be found here - <a href="http://www.pla.co.uk/Safety/Regulations-and-Guidance/Notices-to-Mariners/Notices-to-Mariners">http://www.pla.co.uk/Safety/Regulations-and-Guidance/Notices-to-Mariners/Notices-to-Mariners</a></p>	 <p>PORT OF LONDON AUTHORITY</p>
---	---	---