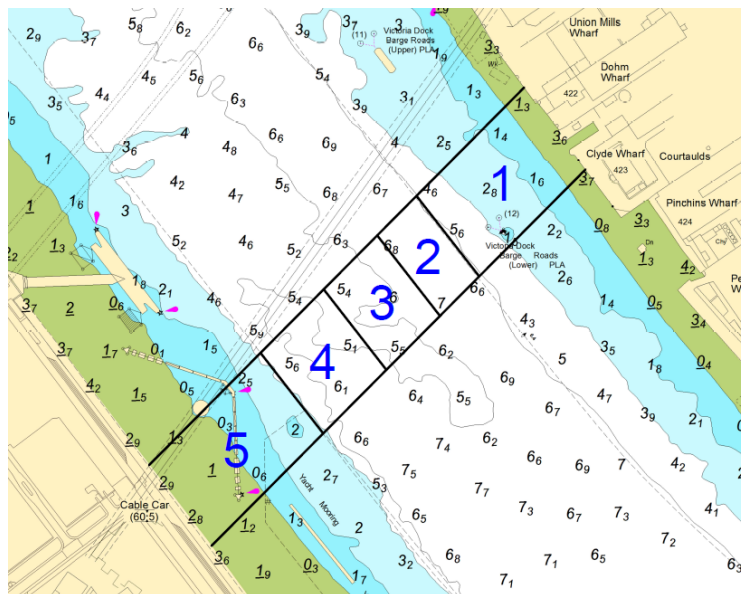


NOTICE TO MARINERS M17 of 2020

BUGSBY'S REACH SILVERTOWN TUNNEL BORE HOLE OPERATIONS

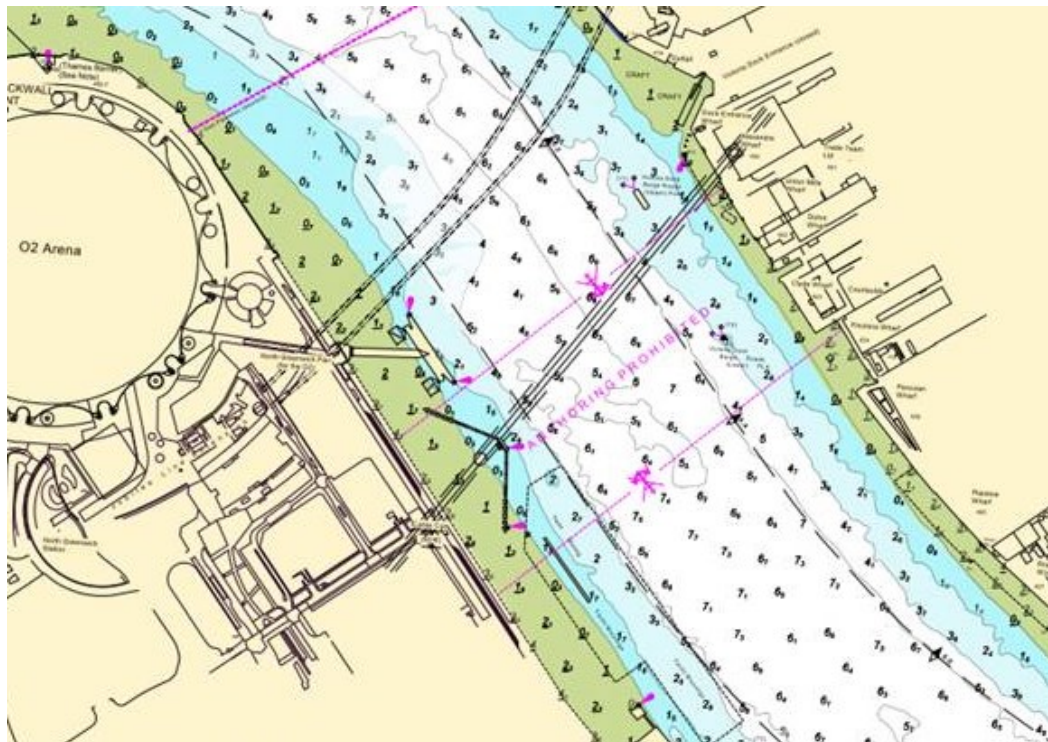
On or about **Sunday 14th June 2020** contractors working on behalf of Transport for London will be conducting bore hole drilling works in Bugsby's Reach in the vicinity of the Emirates Air Line cable car. These works are expected to take approximately seven weeks.

Works will consist of 6 individually drilled bore holes across the area marked on the accompanying chartlet. Instrumentation will be installed into each bore hole and sub-sea cables will be laid on the riverbed from each bore hole to the closest riverbank. In order to accommodate these operations river traffic will be managed by London VTS. The location of the operation (in relation to the marked areas on the chartlet and table) will be detailed as part of the routine river broadcast. An exclusion zone will be established extending 50m around the works.



| Area | Channel Location | Vicinity |
|------|-------------------------------|----------|
| 1 | Outside the navigable channel | North |
| 2 | Inside the navigable channel | North |
| 3 | Inside the navigable channel | Central |
| 4 | Inside the navigable channel | South |
| 5 | Outside the navigable channel | South |

Due to the installation of sub-sea cables a no anchoring zone will be established as marked on the chartlet below. This will remain in force until further notice. Relevant PLA charts and publications will be updated accordingly. <http://www.pla.co.uk/assets/322MSC.pdf>



All vessels are to navigate in this area with caution, maintaining a continuous watch on VHF Channel 14 and follow the instructions from London VTS. These works are within the Thames Barrier Control Zone and all masters are to ensure that they navigate accordingly.

The works will be conducted using the jack up barge **ARAN 120** supported by the multicat **MV SEADOG** and work boat **SNOOPDOG**. ARAN 120 will be fitted with AIS, maintain a continuous listening watch on VHF Channel 14 and display the lights and shapes as prescribed in Rule 27 of the International Regulations for Preventing Collisions at Sea 1972 namely:

- By day, three black shapes in a vertical line the highest and lowest of which are balls and the middle one a diamond.
- By night, three all-round lights in a vertical line the highest and lowest of which are red and the middle one white.

Further details will be broadcast by **London VTS** on **VHF Channel 14**.

4 June 2020

Port of London Authority
London River House, Royal Pier Road,
Gravesend, Kent DA12 2BG

**Mark Towens - Harbour
Master (Upper)**



EXPIRY DATE: 30th August 2020
TO RECEIVE FUTURE NOTICES TO MARINERS BY **E-MAIL**,
PLEASE REGISTER VIA OUR WEBSITE www.pla.co.uk
**Telephone calls, VHF radio traffic, CCTV and radar traffic images may
be recorded in the VTS Centres at Gravesend and Woolwich**
All Current Notices to Mariners can be found here -
<http://www.pla.co.uk/Safety/Regulations-and-Guidance/Notices-to-Mariners/Notices-to-Mariners>

