

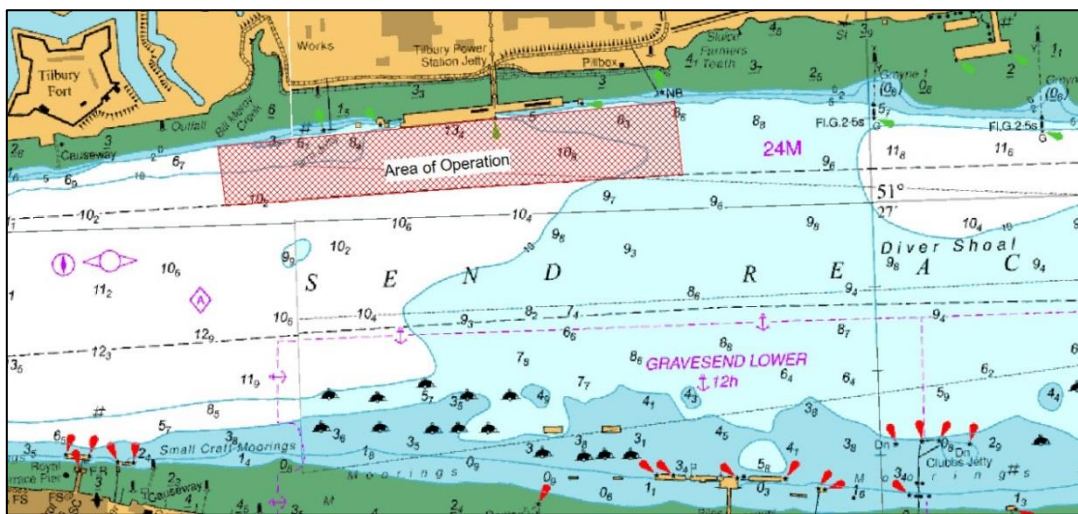
NOTICE TO MARINERS L44 of 2019

GRAVESEND REACH

TILBURY2

MARINE WORKS

This notice supersedes L28 of 2019



Work continues on the development of two new RoRo berths and a CMAT berth on the former Tilbury Power Station Jetty site.

Over the coming months a number of specific marine activities will be taking place:

1. The week commencing 14th October diving will take place to retrieve excess sheet pile wall from the berthing line on the lower end of the former power station jetty. During Lifting operations will also take place during this time. Throughout the diving and lifting operations there will be specific requirements for vessels to 'Proceed with Caution' with this being broadcast by London VTS on VHF Channel 68 in conjunction with marine craft displaying International Code flags "Romeo Yankee".
2. Works are continuing on the construction of a bankseat for the new RoRo pontoon.
3. Removal of the Marsh Farm Jetty continues and is expected to be completed by the end of October 2019.
4. Installation of fender panels and walkways is expected to commence in mid November.

GENERAL INFORMATION

Marine Plant involved in these operations includes the 75m flat top barge NEPTUNE equipped with a 320T crawler crane and two transfer & storage barges. All barge movements will be carried out by either the multi-cat vessel SEADOG or SHAKEDOG, with the safety boat EOL1 in attendance.

At times during the construction works the jetty lights will not be displayed as per published nautical charts. The eastern and western limits of the works will be marked by green aids to navigation at all times. Isolated structures will be marked individually. Charts will be updated on completion of the works.

Throughout the works periods there will be requirements for vessels to 'Proceed with Caution' with this being broadcast by London VTS on VHF Channel 68 in conjunction with marine craft displaying International Code flags "Romeo Yankee". All vessels involved with the works will maintain a continuous listening watch on VHF Channel 68.

For the latest information contact London VTS on VHF Channel 68 or by telephone on 01474 560311.

**11th October
2019**

Port of London Authority
London River House, Royal Pier Road,
Gravesend, Kent DA12 2BG

**BOB BAKER
CHIEF HARBOUR MASTER**



TO RECEIVE FUTURE NOTICES TO MARINERS BY **E-MAIL**,
PLEASE REGISTER VIA OUR WEBSITE www.pla.co.uk
**Telephone calls, VHF radio traffic, CCTV and radar traffic images may
be recorded in the VTS Centres at Gravesend and Woolwich**
All Current Notices to Mariners can be found here -
<http://www.pla.co.uk/Safety/Regulations-and-Guidance/Notices-to-Mariners/Notices-to-Mariners>

