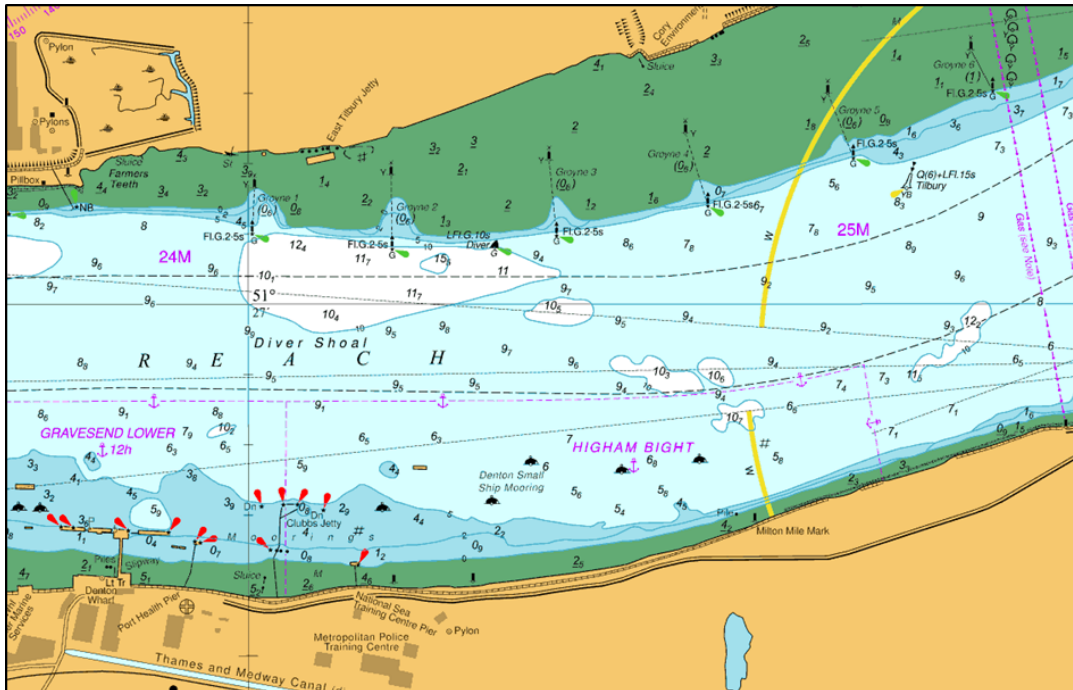


## NOTICE TO MARINERS      L37 of 2019

### GRAVESEND REACH LOWER SPECIAL MARK MISSING GROYNE NO. 2



The special mark and associated post marking the northern limit of Groyne No. 2 has collapsed and is no longer visible at high water. Navigation in the area should be carried out with extreme caution. Repairs will be carried out at the earliest opportunity.

For the latest information contact London VTS on VHF Channel 68 or by telephone on 01474 560311.

**23 August 2019**

Port of London Authority  
London River House, Royal Pier Road,  
Gravesend, Kent DA12 2BG

**BOB BAKER**  
CHIEF HARBOUR MASTER

EXPIRY DATE: 31 December 2022  
TO RECEIVE FUTURE NOTICES TO MARINERS BY **E-MAIL**,  
PLEASE REGISTER VIA OUR WEBSITE [www.pla.co.uk](http://www.pla.co.uk)  
Telephone calls, VHF radio traffic, CCTV and radar traffic images may be recorded in the VTS Centres at Gravesend and Woolwich  
All Current Notices to Mariners can be found here - <http://www.pla.co.uk/Safety/Regulations-and-Guidance/Notices-to-Mariners/Notices-to-Mariners>