

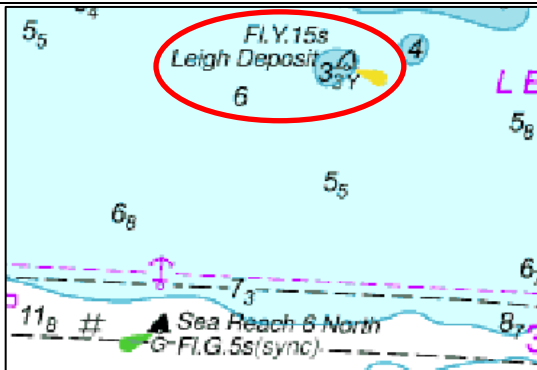
NOTICE TO MARINERS L13 of 2020

AIDS TO NAVIGATION CHANGES

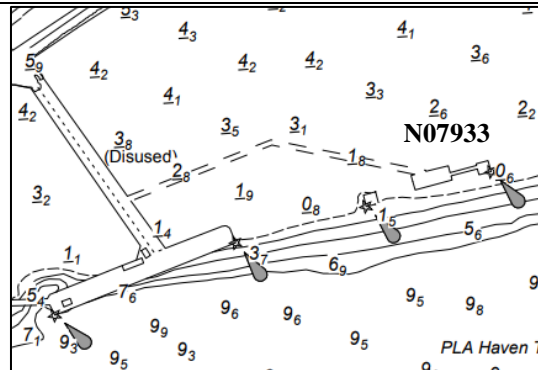
Following a previous review of navigation lights, the Port of London Authority, as the Local Lighthouse Authority, has consulted with Trinity House (the General Lighthouse Authority) and agreed a number of changes to Aids to Navigation (AtoN). These changes will have immediate effect.

The following AtoN are discontinued:

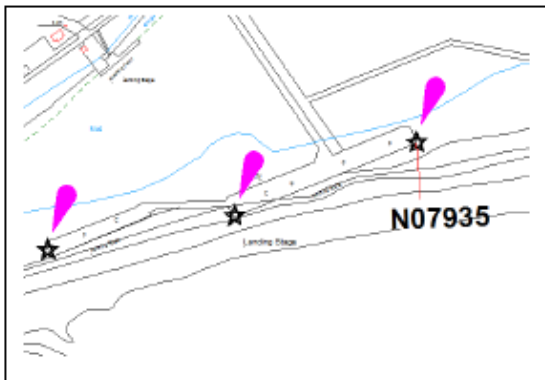
N07900 "Leigh deposit" buoy formerly in position Lat. 51° 30.435'N Long. 000° 40.193'E



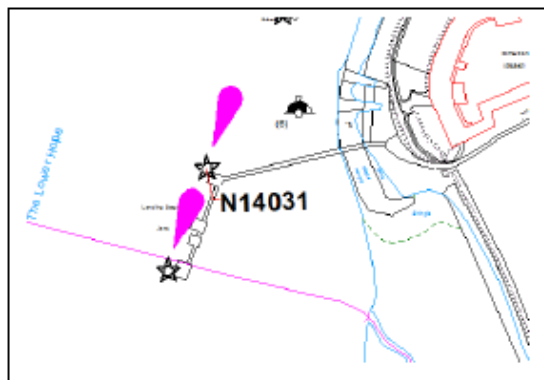
N07933 "Shellhaven M Jetty Lower" lighted beacon in position Lat. 51° 30.409'N Long. 000° 31.078'E



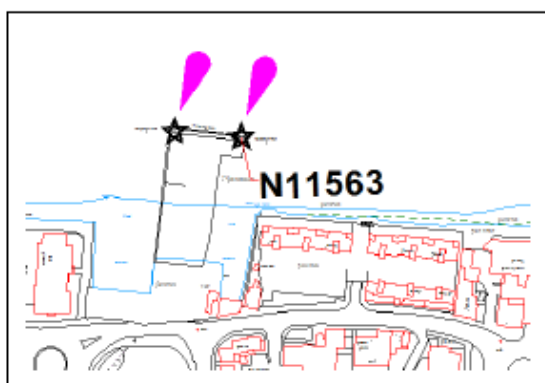
N07935 "Shellhaven L Jetty Lower" lighted beacon in position Lat. 51° 30.389'N Long. 000° 30.942'E



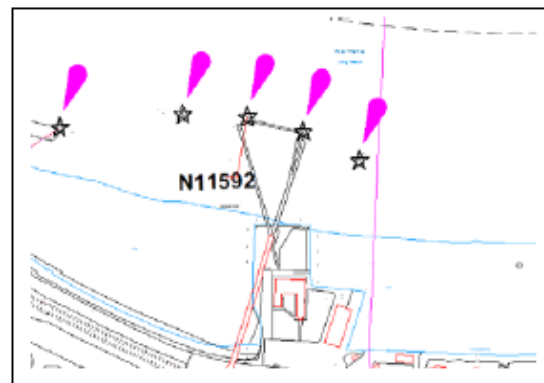
N14031 "Jet Petroleum Jetty Lower Dolphin" lighted beacon in position Lat. 51° 27.780'N Long. 000° 27.173'E



N11563 "L.C.D. Railway Pier Lower" lighted beacon in position Lat. 51° 26.754'N Long. 000° 21.888'E

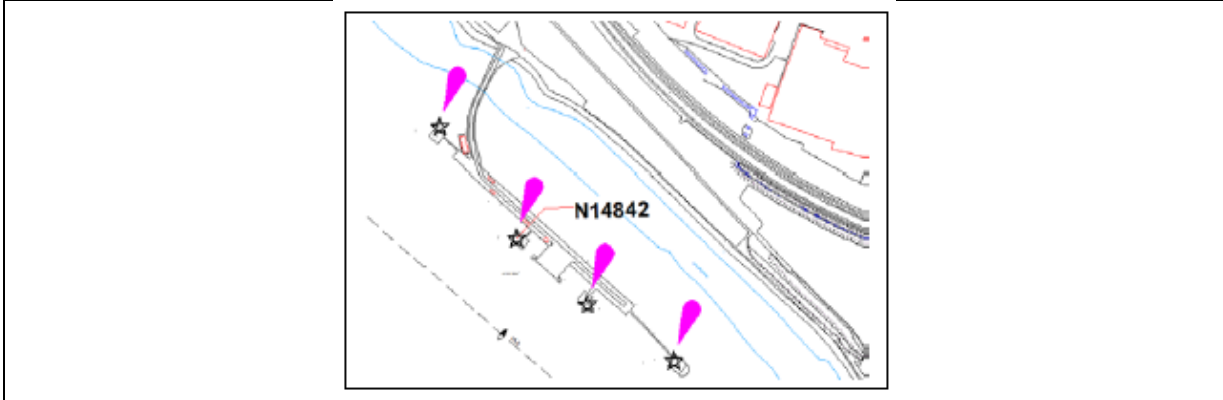


N11592 "Greenhithe Johnsons Jetty Upper" lighted beacon in position Lat. 51° 27.315'N Long. 000° 16.507'E



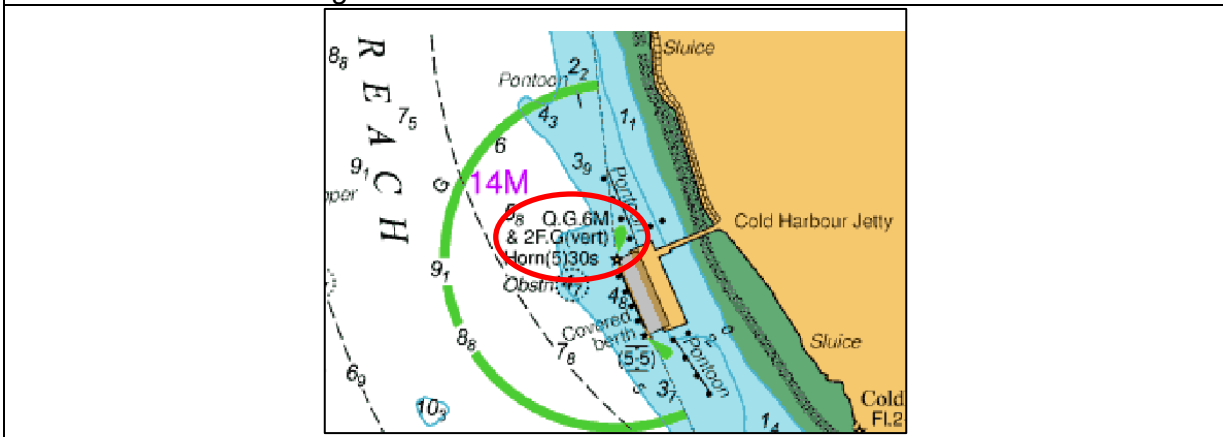
The following AtoN is discontinued:

N14842 "Purfleet Terminal Main Jetty Upper" lighted beacon in position Lat. 51° 28.638'N Long. 000° 14.238'E



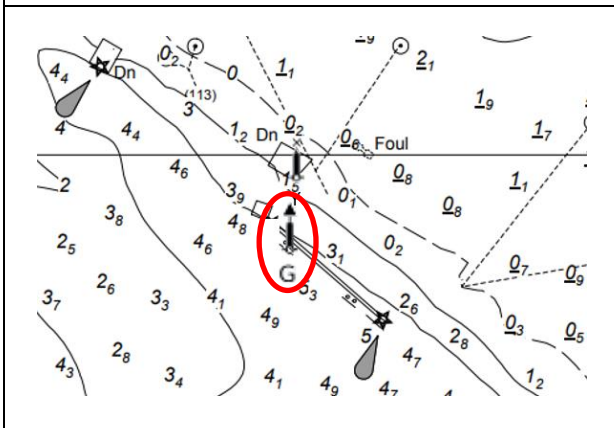
The following AtoN's light character is amended:

N09488 "Rainham Waste Transfer Jetty" lighted beacon Q.G in position Lat. 51° 29.410'N Lat. 000° 10.976'E change to Fl.G.3s

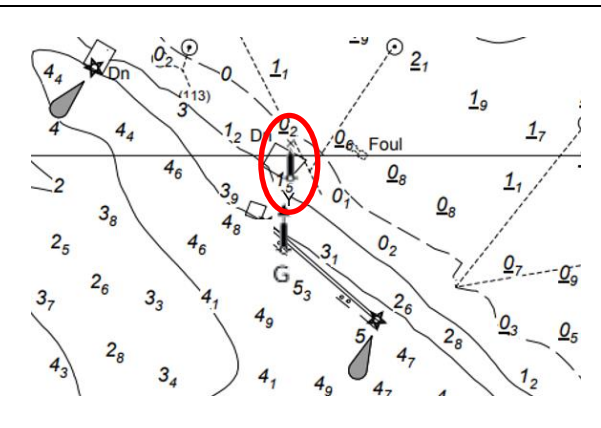


The following AtoN have been established:

"Rainham Phoenix Jetty Outer (Topmark)" unlighted beacon with green conical topmark in position Lat. 51° 30.455'N Long. 000° 10.327' E



"Rainham Phoenix Jetty Inner (Topmark)" unlighted beacon with Cross Y "X" topmark in position Lat. 51° 30.465'N Long. 000° 10.330'E



16 July 2020

Port of London Authority
London River House, Royal Pier Road,
Gravesend, Kent DA12 2BG

Cathryn Spain - Harbour
Master (Lower)



TO RECEIVE FUTURE NOTICES TO MARINERS BY E-MAIL,
PLEASE REGISTER VIA OUR WEBSITE www.pla.co.uk
Telephone calls, VHF radio traffic, CCTV and radar traffic images may
be recorded in the VTS Centres at Gravesend and Woolwich

All Current Notices to Mariners can be found here -
<http://www.pla.co.uk/Safety/Regulations-and-Guidance/Notices-to-Mariners/Notices-to-Mariners>



PORT OF LONDON
AUTHORITY