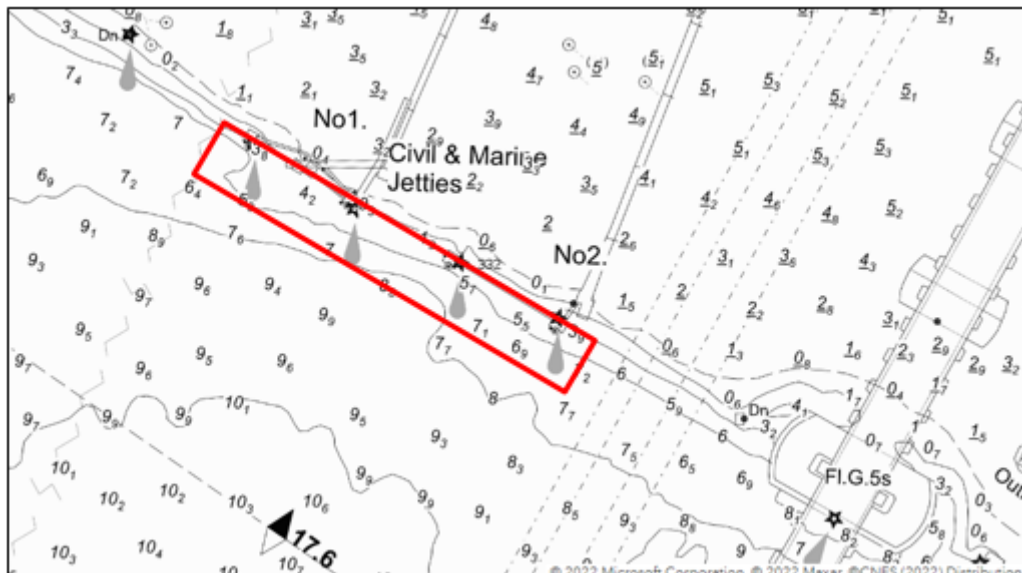


NOTICE TO MARINERS L11 of 2022

LONG REACH (LOWER) DREDGING OPERATIONS

On or about 03rd August 2022, dredging operations will commence at Civil & Marine Jetties, Purfleet. The dredge will be undertaken using the pontoon barge GPS BOXER, with tugs GPS BATTLER or GPS RACIA. Barges PHOEBE, ZEUS and KG17 will be used to remove dredge material from the site. It is planned that the dredge will take place for a period of 6 hours per day during daylight hours, though this is subject to change due to operational requirements and tidal windows. During non-operational times the pontoon will be positioned on spud legs at the berth, with all movements made in conjunction with London VTS. The expected completion date is 9th August 2022.

The chartlet below shows the approximate location of the dredge area.



Requests for vessels to proceed with caution or pass at slow speed will be made by London VTS on VHF ch.68, in accordance with the Port of London Authority's [Port Information Guide](#), under 'London VTS', section 4. During times where this is applicable, the vessels involved in the operation should display 'RY' signals.

Further information will be broadcast by London VTS on Channel 68.

27/07/2022

Port of London Authority
London River House, Royal Pier Road,
Gravesend, Kent DA12 2BG

STEPHANIE SMITH
Deputy Harbour Master

EXPIRY DATE: 20/08/2022

TO RECEIVE FUTURE NOTICES TO MARINERS BY **E-MAIL**,
PLEASE REGISTER VIA OUR WEBSITE www.pla.co.uk

Telephone calls, VHF radio traffic, CCTV and radar traffic images may be recorded in the VTS Centres at Gravesend and Woolwich

All Current Notices to Mariners can be found here - <http://www.pla.co.uk/ntm>