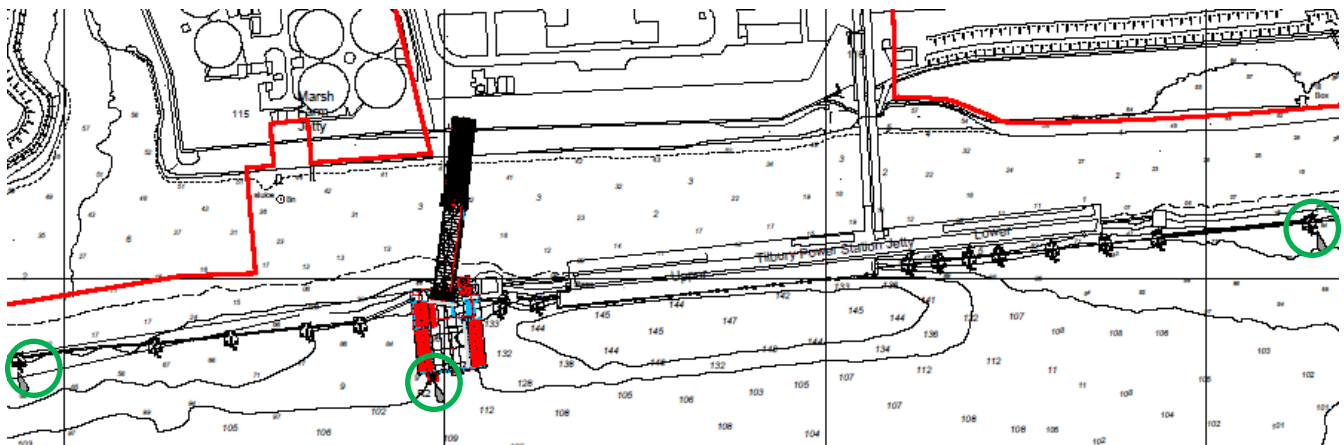


NOTICE TO MARINERS L11 of 2020

GRAVESEND REACH TILBURY 2 NAVIGATION LIGHTS

New navigation lights have been established at the Tilbury 2 site in the following positions:

Known As	Position	Characteristics
RoRo Upper Arm	51°27'05.8"N 0°22'48.1"E	2 Fixed Green Lights at 2 metre vertical centres with 2Nm visibility
Cmat Lower Arm	51°27'07.8"N 0°23'32.3"E	2 Fixed Green Lights at 2 metre vertical centres with 2Nm visibility
RoRo Pontoon	51°27'05.0"N 0°23'02.3"E	2 Fixed Green Lights at 2 metre vertical centres with 2Nm visibility



For the latest information contact London VTS on VHF Channel 68 or by telephone on 01474 560311.

30 April 2020

Port of London Authority
London River House, Royal Pier Road,
Gravesend, Kent DA12 2BG

Cathryn Spain - Harbour
Master (Lower)



TO RECEIVE FUTURE NOTICES TO MARINERS BY **E-MAIL**,
PLEASE REGISTER VIA OUR WEBSITE www.pla.co.uk
Telephone calls, VHF radio traffic, CCTV and radar traffic images may
be recorded in the VTS Centres at Gravesend and Woolwich
All Current Notices to Mariners can be found here -
<http://www.pla.co.uk/Safety/Regulations-and-Guidance/Notices-to-Mariners/Notices-to-Mariners>

