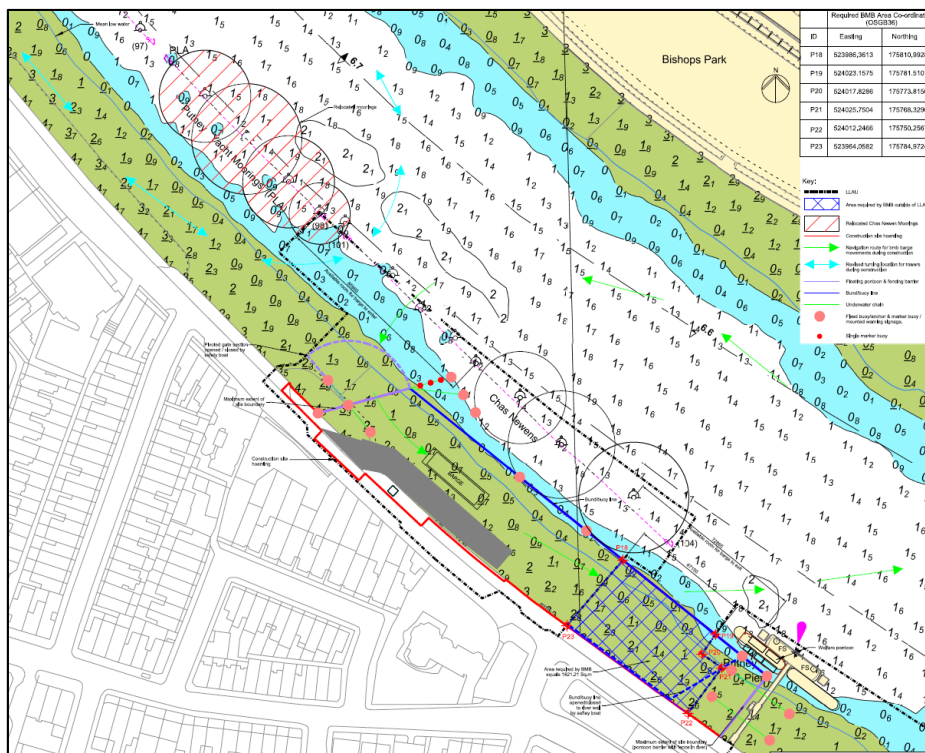


## NOTICE TO MARINERS U15 of 2016

### BARN ELMS REACH

# CONSTRUCTION OF A TEMPORARY SLIPWAY

This NTM Supplements NTM U13 of 2016. It has been necessary to install additional moorings to the floating pontoons with security fencing. These are indicated on the chartlet below. The installation of the floating pontoons and booms will begin on or about the 29<sup>th</sup> November 2016.



All river users are requested to be mindful of the nature of the works and to pass at a safe distance from these moorings and buoys.

Further details will be broadcast by London VTS on VHF Channel 14.

**24 November  
2016**

Port of London Authority  
London River House, Royal Pier Road,  
Gravesend, Kent DA12 2BG

**BOB BAKER  
CHIEF HARBOUR MASTER**



EXPIRY DATE: 31<sup>st</sup> March 2017  
TO RECEIVE FUTURE NOTICES TO MARINERS BY **E-MAIL**,  
PLEASE REGISTER VIA OUR WEBSITE [www.pla.co.uk](http://www.pla.co.uk)  
Telephone calls, VHF radio traffic, CCTV and radar traffic images may  
be recorded in the VTS Centres at Gravesend and Woolwich

