

## NOTICE TO MARINERS U13 of 2019

### BARN ELMS REACH

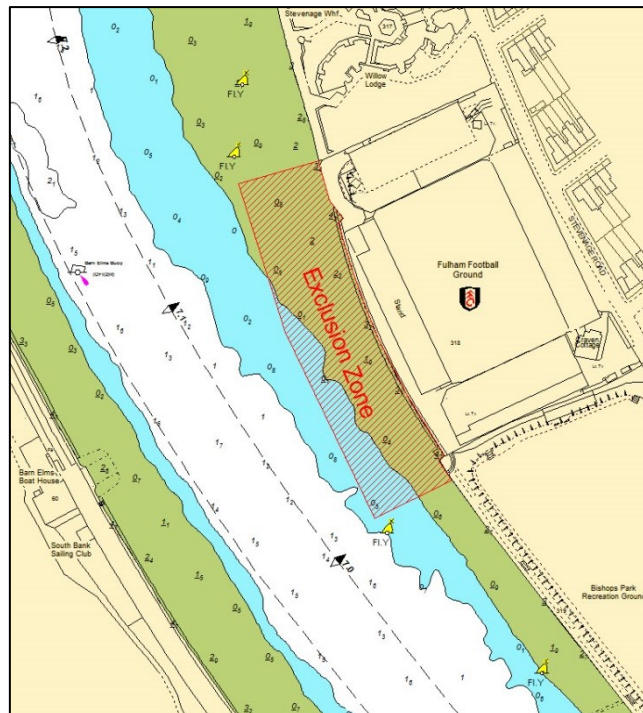
# FULHAM FOOTBALL CLUB CONSTRUCTION OF NEW STAND

On or about the 20<sup>th</sup> June 2019, contractors working on behalf of Fulham Football Club will begin works for the construction of a new river walkway and stand. The works, which will include piling, muckaway and construction operations will take place using a variety of barges including crane barges, jack up barges, supply barges, tugs and work boats and expected to take approximately 18 months.

In order to support the safety of river users in the vicinity of the site a number of mitigation measures will support these works.

A temporary exclusion zone will be established for the site of the construction works extending the length of the Fulham Football Club site and 50m from the river wall. This exclusion zone is indicated in the chartlet below and will be marked by Special Marks consisting of a Yellow Buoy with light characteristic Fl Y 2.5s.

This exclusion zone will be supported by the Guard Boat KORAT, to warn approaching river users, and a worksite safety boat. No vessels other than those engaged in the works shall enter the navigation exclusion zone depicted by the red line on the chartlet.



Materials to support the construction works will be supplied by river and these deliveries will usually be undertaken outside of peak recreational times. These movements, when navigating above Wandsworth Bridge, will be escorted by a Guard Boat to warn river traffic of the large vessel movement.

All vessels associated with the works will maintain a listening watch on VHF channel 14. At times RY flags will be exhibited in conjunction with “proceed with caution / slow down requests” in VTS broadcasts.

Vessels are requested to be mindful of the nature of the works, be aware of vessels proceeding to and from the works, their wash when passing the works, and to pass at a safe distance particularly from the special marks identifying the exclusion zone.

Further details will be broadcast by London VTS on **VHF Channel 14**.

---

**12 June 2019**

Port of London Authority  
London River House, Royal Pier Road,  
Gravesend, Kent DA12 2BG

**BOB BAKER**  
**CHIEF HARBOUR MASTER**



TO RECEIVE FUTURE NOTICES TO MARINERS BY **E-MAIL**,  
PLEASE REGISTER VIA OUR WEBSITE [www.pla.co.uk](http://www.pla.co.uk)  
**Telephone calls, VHF radio traffic, CCTV and radar traffic images may  
be recorded in the VTS Centres at Gravesend and Woolwich**  
**All Current Notices to Mariners can be found here -**  
**[http://www.pla.co.uk/Safety/Regulations-and-Guidance/Notices-to-](http://www.pla.co.uk/Safety/Regulations-and-Guidance/Notices-to-Mariners/Notices-to-Mariners)**  
**[Mariners/Notices-to-Mariners](http://www.pla.co.uk/Safety/Regulations-and-Guidance/Notices-to-Mariners/Notices-to-Mariners)**

