

## **NOTICE TO MARINERS** U13 of 2016

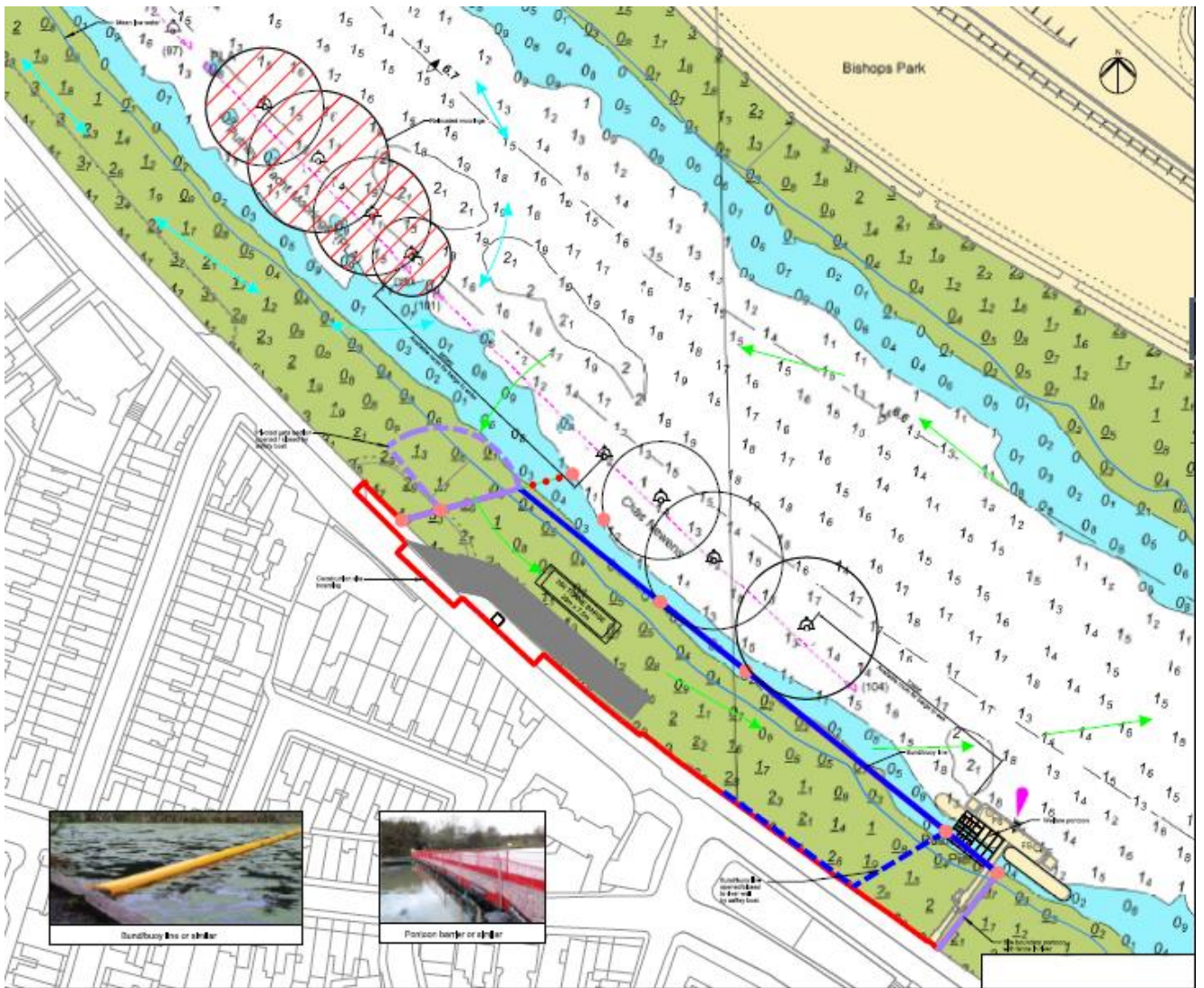
### BARN ELMS REACH

## **CONSTRUCTION OF A TEMPORARY SLIPWAY**










Mariners are advised that contractors working on Tideway Tunnel preliminary works will construct a temporary slipway at Putney Embankment for use when Putney Drawdock is closed next year.

On or about the 14<sup>th</sup> November 2016 the PLA vessel DRIFTWOOD 3 will relay a new configuration of moorings in the "PLA moorings" and the Chas Newen's vessels will be temporarily transferred to the PLA moorings. On or about the 21<sup>st</sup> November 2016, contractors will begin to establish the site, erecting security and boundary fencing as indicated in the chartlet below. The existing slipway at this location will not be fenced before the 28<sup>th</sup> November to allow the Scullers Head to proceed unhindered.

Floating fencing with low level lighting and booms will mark the riverward extent of the site depicted by magenta and dark blue lines respectively. The fencing and booms will be temporarily opened to permit the passage of tugs and tows to and from site. The duration of the construction works is approximately 4 months.



**Key:**

-  Relocated Chas Newen Moorings
-  Construction site hoarding
-  Navigation route for bmb barge movements during construction
-  Revised turning location for rowers during construction
-  Floating pontoon & fending barrier
-  Bund/buoy line
-  Underwater chain
-  Fixed buoy/anchor
-  Marker buoy

All river users are requested to be mindful of the nature of the works, to pass at a safe distance and keep clear of tugs and tows proceeding to and from the site.

Further details will be broadcast by London VTS on VHF Channel 14

---

**1 November  
2016**

Port of London Authority  
London River House, Royal Pier Road,  
Gravesend, Kent DA12 2BG

**BOB BAKER  
CHIEF HARBOUR MASTER**



EXPIRY DATE: 31<sup>st</sup> March 2017  
TO RECEIVE FUTURE NOTICES TO MARINERS BY **E-MAIL**,  
PLEASE REGISTER VIA OUR WEBSITE [www.pla.co.uk](http://www.pla.co.uk)  
**Telephone calls, VHF radio traffic, CCTV and radar traffic images may  
be recorded in the VTS Centres at Gravesend and Woolwich**

