

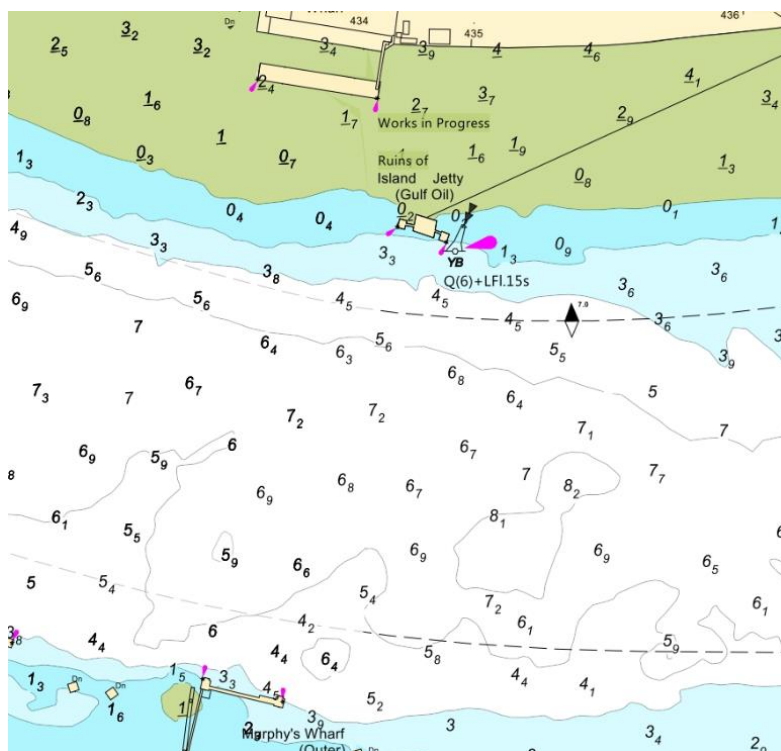
## NOTICE TO MARINERS      M90 of 2018

### WOOLWICH REACH (UPPER)

### ISLAND JETTY

## DECONSTRUCTION WORKS IN PROGRESS - OBSTRUCTION

Mariners are advised that on the 28<sup>th</sup> December 2018 a PLA Driftwood vessel will position a South Cardinal Mark off the piles at the deconstructed Island Jetty. The South Cardinal Mark will display a white light with characteristics Q(6)+LFl.15s. See the chartlet below depicting the location of the South Cardinal Mark.



Further details will be broadcast by London VTS on VHF Channel 14.

**27<sup>th</sup> December  
2018**

Port of London Authority  
London River House, Royal Pier Road,  
Gravesend, Kent DA12 2BG

**BOB BAKER  
CHIEF HARBOUR MASTER**



EXPIRY DATE: 4<sup>th</sup> March 2019  
TO RECEIVE FUTURE NOTICES TO MARINERS BY E-MAIL,  
PLEASE REGISTER VIA OUR WEBSITE [www.pla.co.uk](http://www.pla.co.uk)  
Telephone calls, VHF radio traffic, CCTV and radar traffic images may  
be recorded in the VTS Centres at Gravesend and Woolwich  
All Current Notices to Mariners can be found here -  
<http://www.pla.co.uk/Safety/Regulations-and-Guidance/Notices-to-Mariners/Notices-to-Mariners>

