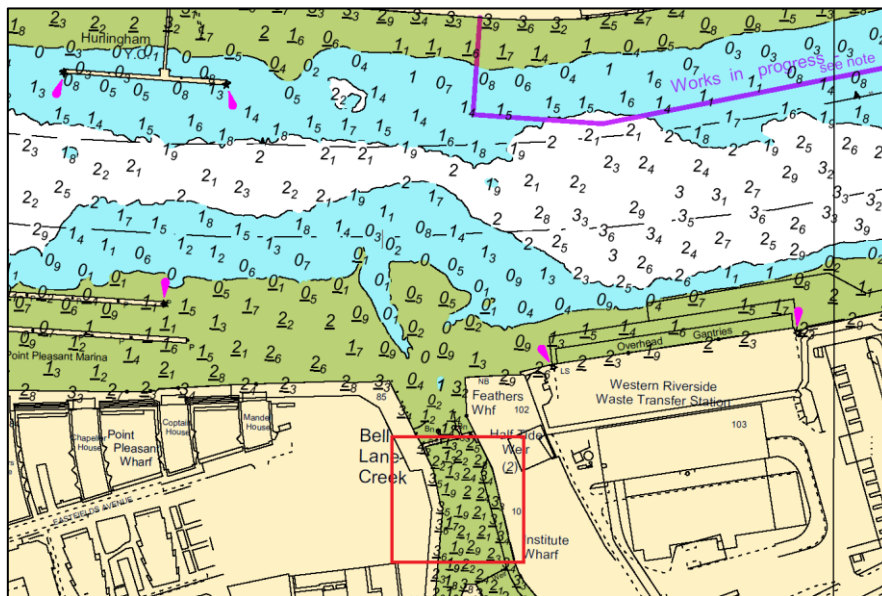


NOTICE TO MARINERS M89 of 2018

WANDSWORTH REACH BELL LANE CREEK RIVER WALL MAINTENANCE

This Notice supersedes Notice M72 of 2018 which is hereby cancelled

Works in Bell Lane Creek have been extended. The works are supported by the crane barge "RAVESTEIN" involving piling operations and river wall maintenance works. It is expected that all works will be complete by 8th February 2019. See the chartlet below depicting the location of the works in red.



Vessels navigating in the vicinity of Bell Lane Creek are to do so with particular caution with due regard of the works taking place. London VTS will broadcast requests for vessels to "proceed with caution" or "proceed at slow speed", as described in the Permanent Notices to Mariners 4 of 2014, as required by the works. International Code flags "Romeo Yankee" will be displayed when this is in effect.

The safety boat "MOLLY G" will also be in attendance throughout and maintaining a listening watch on VHF channel 14.

Further details will be broadcast by London VTS on VHF Channel 14.

12th December
2018

Port of London Authority
London River House, Royal Pier Road,
Gravesend, Kent DA12 2BG

BOB BAKER
CHIEF HARBOUR MASTER



EXPIRY DATE: 22nd February 2019
TO RECEIVE FUTURE NOTICES TO MARINERS BY E-MAIL,
PLEASE REGISTER VIA OUR WEBSITE www.pla.co.uk
Telephone calls, VHF radio traffic, CCTV and radar traffic images may
be recorded in the VTS Centres at Gravesend and Woolwich
All Current Notices to Mariners can be found here -
<http://www.pla.co.uk/Safety/Regulations-and-Guidance/Notices-to-Mariners/Notices-to-Mariners>

