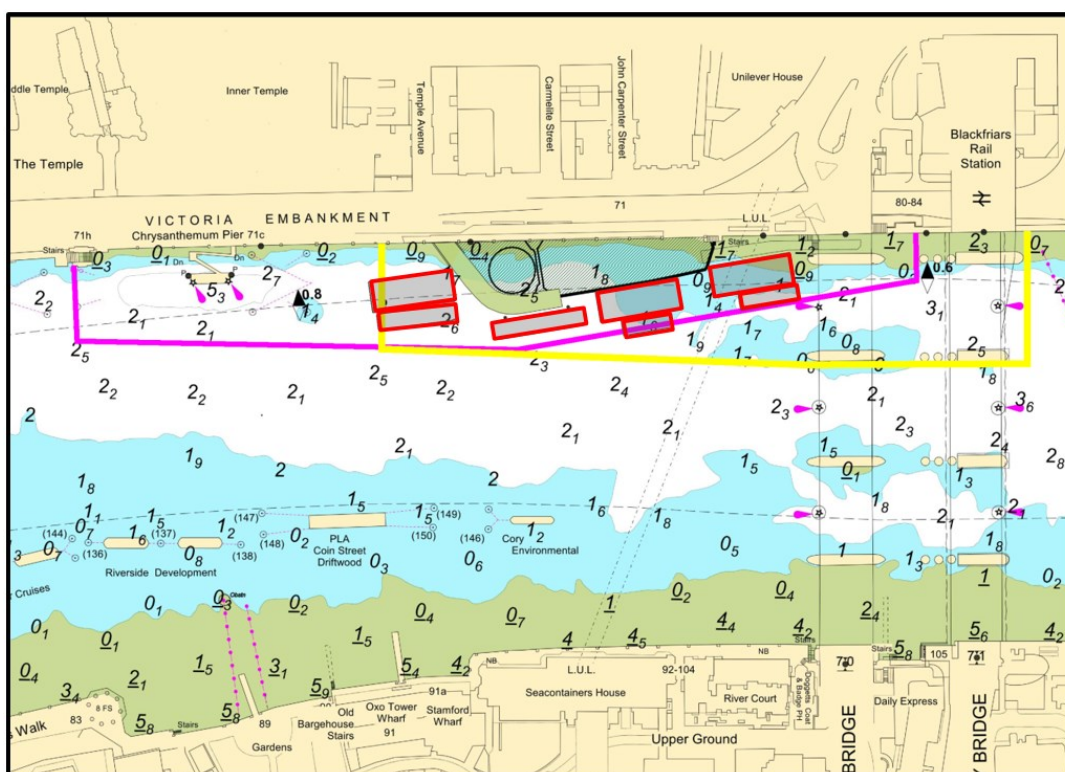


KINGS REACH**BLACKFRIARS CONSTRUCTION WORKS**

This notice updates M23 of 2020 which is hereby cancelled.

Mariners are advised that contractors working on the Tideway Tunnel Project will continue works to construct the permanent works and remove the cofferdam on the north shore, just upriver of Blackfriars Bridge.

The chartlet below depicts the possible locations of the marine plant and barges (in red) and the exclusion zone (in yellow).



No vessels other than those engaged in the works or who have permitted vessel status shall enter the navigation exclusion zone.

The works which will include dredging, diving, piling, excavation, back filling operations and reinforced concrete deconstruction works and will take place using a variety of crane barges, supply barges, tugs and multi-cat vessels. The vessels will maintain a listening watch on VHF channel 14.

19/09/2023

Port of London Authority
London River House, Royal Pier Road,
Gravesend, Kent DA12 2BG

LYN KINDLEN-FUNNELL
Harbour Master

EXPIRY DATE: 31/12/2023

TO RECEIVE FUTURE NOTICES TO MARINERS BY E-MAIL,
PLEASE REGISTER VIA OUR WEBSITE pla.co.uk/Subscription-to-Newsletter

Telephone calls, VHF radio traffic, CCTV and radar traffic images may be recorded in the
VTS Centres at Gravesend and Woolwich



View all Active Notice to Mariners
using the above QR Code

No 1 arch will be closed during construction operations and will be marked in accordance with the Port of London Authority Thames Byelaws 2012 namely:

- By day, three red discs 0.6 metres in diameter at the points of an equilateral triangle with the apex downwards and the base horizontal
- By night, three red lights in similar positions to the discs displayed by day.

A smart signal light is fitted above no 2 arch of Blackfriars Rail Bridge.

The smart signal light will be controlled remotely by London VTS and is capable of displaying three separate signals with their meaning as described below:



Closed to navigation to **all** vessels



Open to navigation to **all** vessels



- Only "**PERMITTED VESSELS**" may transit through No 2 arch.
- It remains the responsibility of the "PERMITTED VESSEL'S" master to ensure that they can safely manoeuvre through No 2 arch and around the marine plant involved in the Blackfriars Tideway worksite with due regard to the height and the direction of tide.
- "PERMITTED VESSELS" using No 2 arch are not to overtake vessels navigating inwards through No 3 arch.

At times, requests for vessels to proceed with caution or pass at slow speed will be made by London VTS on VHF ch.14, in accordance with the Port of London Authority's [Port Information Guide](#), under 'London VTS', section 4. International Code Flags 'Romeo Yankee (RY)' will be displayed accordingly.



In addition, if diving operations are underway, International Code Flag 'Alpha (A)' and a red flag in accordance with Byelaw 33 will be displayed as appropriate:

A:



Diver's point of entry to water:



Vessels are requested to be mindful of the nature of the works, to be aware of vessels proceeding to and from the works and of their wash when passing the works.

Further details will be broadcast by London VTS on VHF Channel 14.