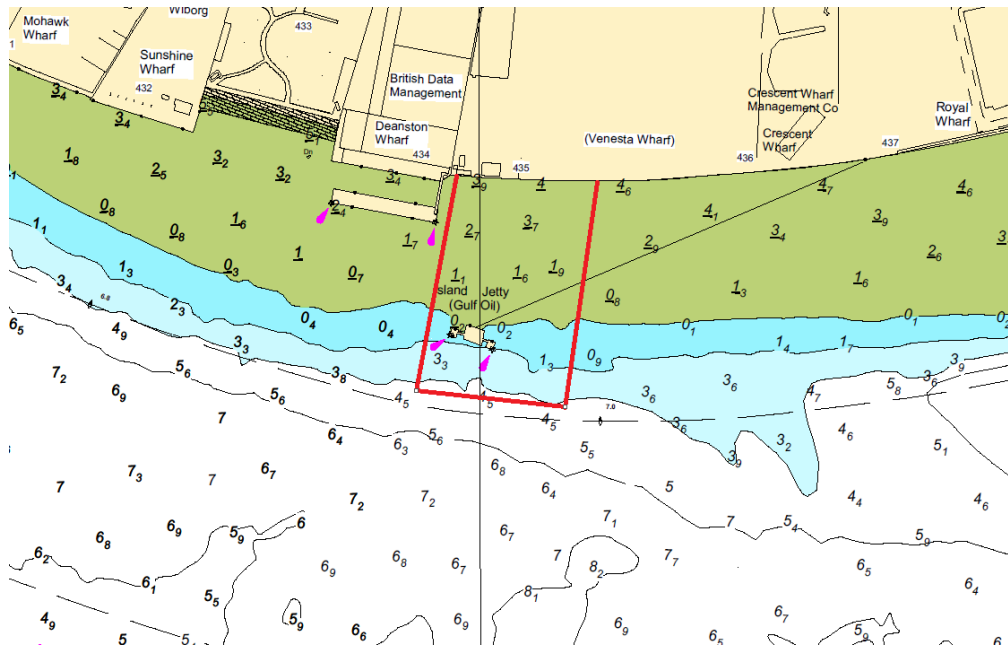


NOTICE TO MARINERS M77 of 2018

WOOLWICH REACH ISLAND JETTY DECONSTRUCTION WORKS

On or about **12th November 2018**, contractors working on behalf of McLaughlin & Harvey will be undertaking deconstruction works at Island Jetty for approximately 8 weeks. The works will be undertaken from the jack-up barge 'COMMANDER'.

The chartlet below depicts the location of the works and the limits of the navigation exclusion zone defined by the red boxed area. Only vessels engaged in the works may enter the exclusion zone.



The jack-up barge will display the lights and shapes as prescribed in Rule 27 of the International Regulations for Preventing Collisions at Sea 1972, namely:

- By day, three black shapes in a vertical line the highest and lowest of which are balls and the middle one a diamond.
- By night, three all round lights in a vertical line the highest and lowest of which are red and the middle one white.

London VTS will broadcast requests for vessels to “proceed with caution” or “proceed at slow speed”, as described in Permanent Notices to Mariners 4 of 2014 as required by the works. International Code Flags “Romeo Yankee” will be displayed when this is in effect.

Further details will be broadcast by London VTS on VHF Channel 14.

**02nd November
2018**

Port of London Authority
London River House, Royal Pier Road,
Gravesend, Kent DA12 2BG

**BOB BAKER
CHIEF HARBOUR MASTER**



EXPIRY DATE: 07th January 2019
TO RECEIVE FUTURE NOTICES TO MARINERS BY **E-MAIL**,
PLEASE REGISTER VIA OUR WEBSITE www.pla.co.uk
**Telephone calls, VHF radio traffic, CCTV and radar traffic images may
be recorded in the VTS Centres at Gravesend and Woolwich**

