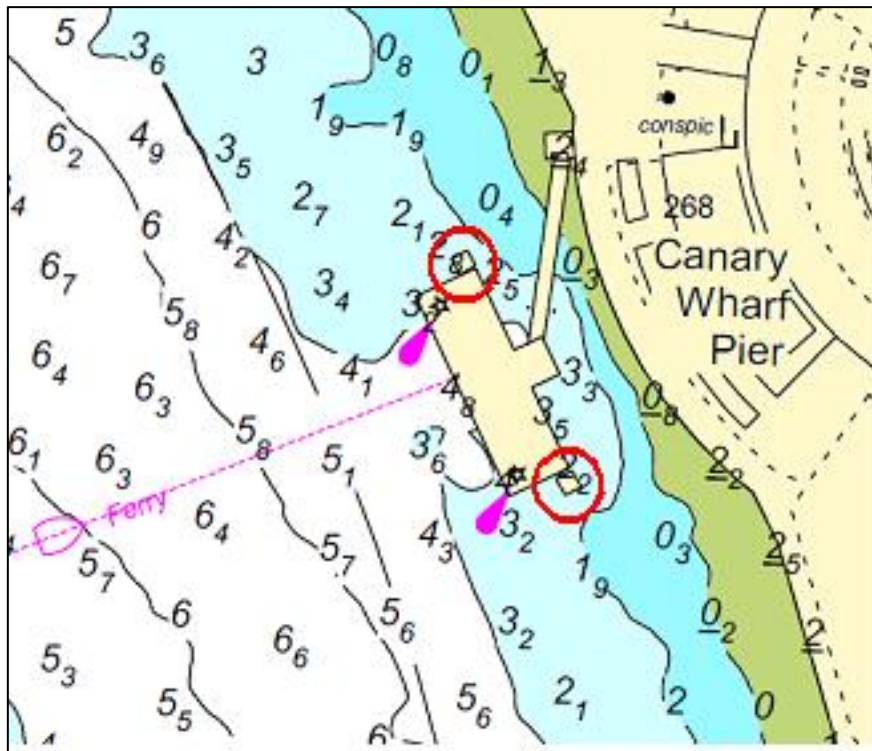


## NOTICE TO MARINERS      M73 of 2017

### LIMEHOUSE REACH CANARY WHARF PIER MAINTENANCE WORKS

Mariners are advised that maintenance works will be undertaken on the steel piles at Canary Wharf Pier from 4<sup>th</sup> September 2017 for approximately 6 weeks. Access to the works will be undertaken from the work boat “PRONTO”.

Please see the chartlet below depicting the location of the works.



Vessels navigating in the vicinity of Canary Wharf Pier are to do so with particular caution with due regard of the works taking place. London VTS will broadcast requests for vessels to “proceed with caution” or “proceed at slow speed”, as described in the Permanent Notices to Mariners 4 of 2014, as required by the works. International Code flags “Romeo Yankee” will be displayed when this is in effect.

Further details will be broadcast by London VTS on VHF Channel 14.

**15 August 2017**

Port of London Authority  
London River House, Royal Pier Road,  
Gravesend, Kent DA12 2BG

**BOB BAKER**  
CHIEF HARBOUR MASTER



EXPIRY DATE: 10<sup>th</sup> October 2017  
TO RECEIVE FUTURE NOTICES TO MARINERS BY **E-MAIL**,  
PLEASE REGISTER VIA OUR WEBSITE [www.pla.co.uk](http://www.pla.co.uk)  
**Telephone calls, VHF radio traffic, CCTV and radar traffic images may  
be recorded in the VTS Centres at Gravesend and Woolwich**

