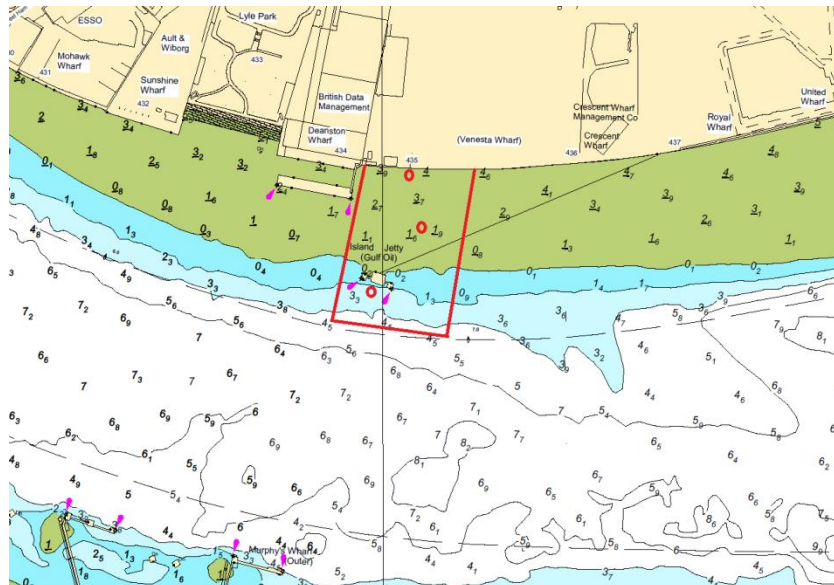


## NOTICE TO MARINERS M6 of 2019

### WOOLWICH REACH ROYAL WHARF INSTALLATION OF PILES

On or about **28<sup>th</sup> January 2019** CMP Thames will be working on behalf of McLaughlin & Harvey to install piles at Royal Wharf. Three boreholes will be drilled into the river bed from the **'ADMIRAL 1'** jack-up barge. The works are expected to take approximately 8 weeks.

The chartlet below depicts the location of the works and the limits of the navigation exclusion zone defined by the red boxed area. Only vessels engaged in the works may enter the exclusion zone.



The jack-up barge will display the lights and shapes as prescribed in Rule 27 of the International Regulations for Preventing Collisions at Sea 1972, namely:

- By day, three black shapes in a vertical line the highest and lowest of which are balls and the middle one a diamond.
- By night, three all round lights in a vertical line the highest and lowest of which are red and the middle one white.

London VTS will broadcast requests for vessels to “proceed with caution” or “proceed at slow speed”, as described in Permanent Notices to Mariners 4 of 2014 as required by the works. International Code Flags “Romeo Yankee” will be displayed when this is in effect.



Safety boat **“MOLLY G”** will be on station throughout operations and all vessels will maintain a listening watch on VHF Channel 14.

Further details will be broadcast by London VTS on VHF Channel 14.

**18 January 2019**

Port of London Authority  
London River House, Royal Pier Road,  
Gravesend, Kent DA12 2BG

**BOB BAKER**  
CHIEF HARBOUR MASTER

 <p>CERTIFIED ISO 9001 - ISO 14001 OHSAS 18001</p>	<p>EXPIRY DATE: 29<sup>th</sup> March 2019 TO RECEIVE FUTURE NOTICES TO MARINERS BY <b>E-MAIL</b>, PLEASE REGISTER VIA OUR WEBSITE <a href="http://www.pla.co.uk">www.pla.co.uk</a> Telephone calls, VHF radio traffic, CCTV and radar traffic images may be recorded in the VTS Centres at Gravesend and Woolwich All Current Notices to Mariners can be found here - <a href="http://www.pla.co.uk/Safety/Regulations-and-Guidance/Notices-to-Mariners/Notices-to-Mariners">http://www.pla.co.uk/Safety/Regulations-and-Guidance/Notices-to-Mariners/Notices-to-Mariners</a></p>	 <p>PORT OF LONDON AUTHORITY</p>
---	--	---