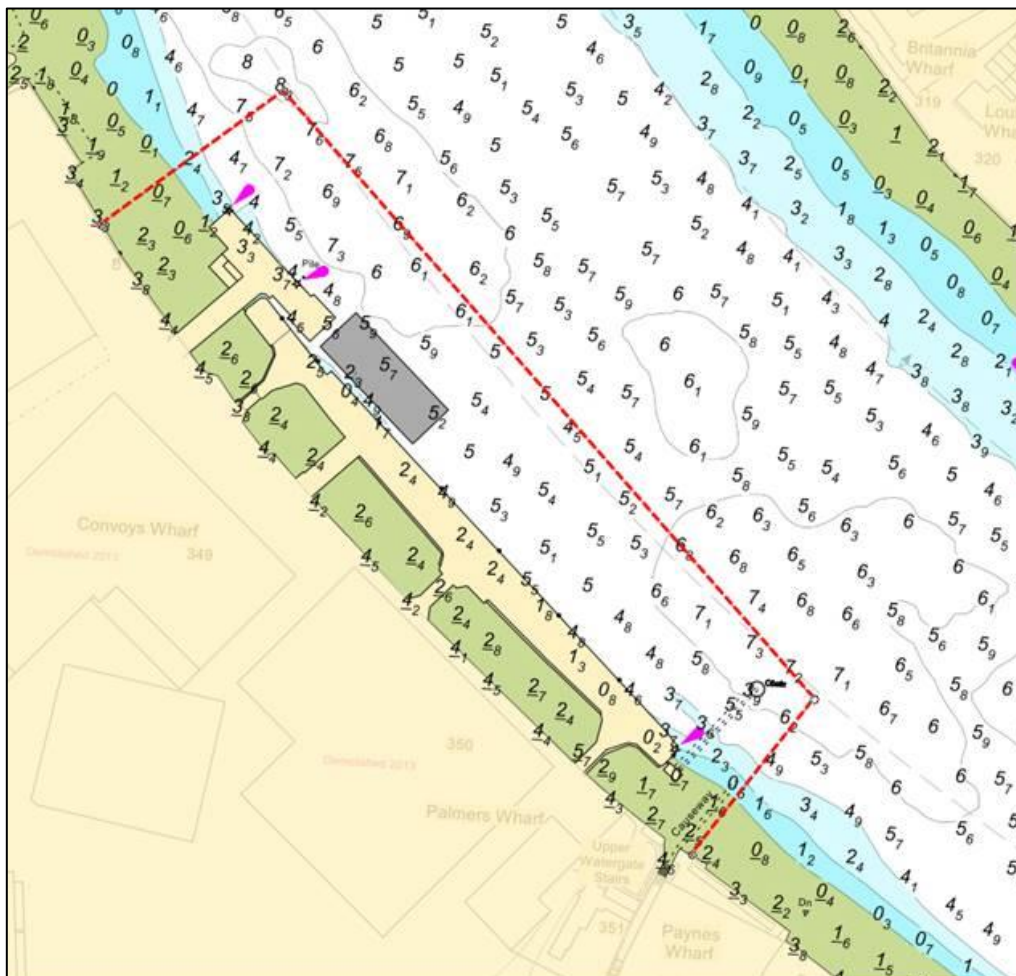


NOTICE TO MARINERS M69 of 2018

LIMEHOUSE REACH CONVOYS WHARF DECONSTRUCTION WORKS

On or about the 2nd October 2018, contractors working on behalf of Hutchinson Whampoa will be undertaking deconstruction works of the sunken pontoon at Convoys Wharf. In preparation for these works the East Cardinal Mark as described in NTM M64 of 2017 will be removed.

The works will be undertaken by the Crane Barge GAVERLAND with support from the Barge DEVELOPER and an attending tug and are expected to take approximately 3 months. An exclusion zone of 40m will be established around the works, as indicated in the chart below, and no vessels other than those associated with the works should enter this area.



Works will be undertaken on Monday to Friday from 08:00 – 18:00 and from 08:00 – 13:30 on Saturdays at which times RY flags will be exhibited by the GAVERLAND in conjunction with “proceed with caution / slow down requests” in VTS broadcasts. The GAVERLAND will also be maintain a listening watch on VHF Ch14

Vessels are requested to be mindful of the nature of the works, their wash when passing the works and to pass at a safe distance.

Further details will be broadcast by London VTS on VHF Channel 14.

**21st September
2018**

Port of London Authority
London River House, Royal Pier Road,
Gravesend, Kent DA12 2BG

**BOB BAKER
CHIEF HARBOUR MASTER**



EXPIRY DATE: 1st January 2019
TO RECEIVE FUTURE NOTICES TO MARINERS BY **E-MAIL**,
PLEASE REGISTER VIA OUR WEBSITE www.pla.co.uk
**Telephone calls, VHF radio traffic, CCTV and radar traffic images may
be recorded in the VTS Centres at Gravesend and Woolwich**

