

NOTICE TO MARINERS M65 of 2017

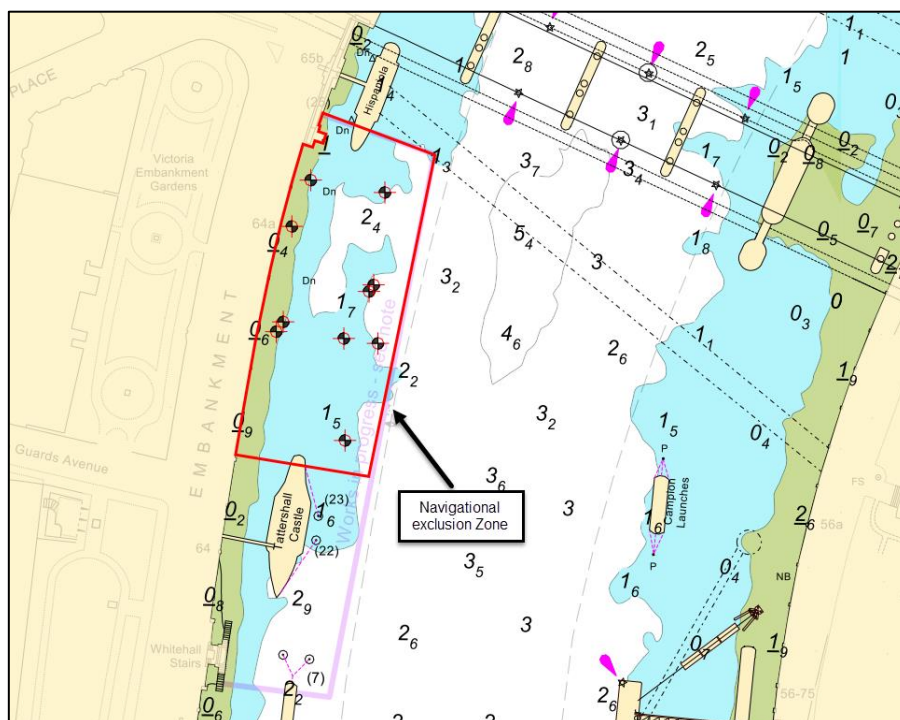
LAMBETH REACH VICTORIA EMBANKMENT SITE INVESTIGATION WORKS

This Notice supersedes M60 of 2017 which is hereby cancelled.

We draw your attention to the change in dates regarding the closure of No 1 arch at Charing Cross Bridge, which will be closed at night from 7th to 11th August inclusive.

Mariners are advised that on or about 24th July 2017, contractors working on the Tideway Tunnel Project will commence ground investigation works using divers between Charing Cross Bridge and the Tattershall Castle along the North shore. The works are expected to take approximately four weeks.

Please see the chartlet below depicting the location of the investigation works identified by red circles.



Diving operations will take place from the CPBS BULLDOG which will also have a hopper barge moored alongside. Diving operations will take place Monday to Friday over slack waters between 0700 and 1900 hours. When at the three northern most locations, No 1 arch

of Charing Cross Rail Bridge will be closed from approximately 7th August to 11th August inclusive, between the hours of 2000 and 0600 the following day.

Anchors used to moor CPBS BULLDOG and the hopper barge will be marked by yellow pellet buoys which will not be outside the area indicated by the red line on the chartlet.

The six eastern most locations will be marked by yellow pellet buoys while each is being investigated to indicate the presence of reduced depths and obstructions.

Arches closed to navigation will be marked in accordance with the Port of London Authority Thames Byelaws 2012 namely:

- By day, three red discs 0.6 metres in diameter at the points of an equilateral triangle with the apex downwards and the base horizontal
- By night, three red lights in similar positions to the discs displayed by day.

Vessels involved in the works will maintain a listening watch on VHF channel 14.

Vessels are requested to be mindful of the nature of the works, their wash when passing the works and to pass at a safe distance particularly from the yellow pellet buoys.

No vessels other than those engaged in the works shall enter the navigation exclusion zone depicted by the red line on the chartlet.

London VTS will broadcast requests for vessels to “proceed with caution” or “proceed at slow speed”, as described in Permanent Notices to Mariners 4 of 2014 as required by the diving works. International Code flags “Romeo Yankee” will be displayed only when this is in effect.

Further details will be broadcast by London VTS on VHF Channel 14.

21 July 2017

Port of London Authority
London River House, Royal Pier Road,
Gravesend, Kent DA12 2BG

BOB BAKER
CHIEF HARBOUR MASTER



EXPIRY DATE: 31st August 2017
TO RECEIVE FUTURE NOTICES TO MARINERS BY **E-MAIL**,
PLEASE REGISTER VIA OUR WEBSITE www.pla.co.uk
**Telephone calls, VHF radio traffic, CCTV and radar traffic images may
be recorded in the VTS Centres at Gravesend and Woolwich**

