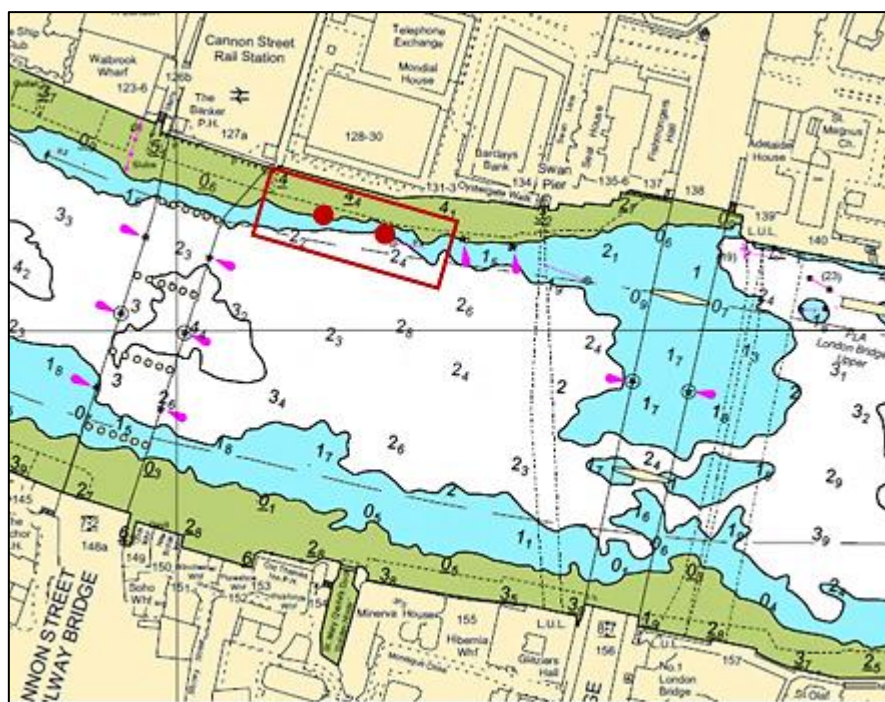


NOTICE TO MARINERS M63 of 2017

KING'S REACH WATERMARK PLACE SOIL INVESTIGATION WORKS

Mariners are advised that contractors will conduct soil investigation works at Watermark Place on or about 31st July 2017 for approximately 4 weeks. Boreholes will be drilled into the river bed from the **RAVESTEIN** crane barge. All vessels involved will maintain a continuous listening watch on VHF channel 14.

Please see the chartlet below depicting the location of the works and the limits of the navigation exclusion zone defined by the red boxed area. Only vessels engaged in the works may enter the exclusion zone.



The crane barge will display the lights and shapes as prescribed in Rule 27 of the International Regulations for Preventing Collisions at Sea 1972, namely:

- By day, three black shapes in a vertical line the highest and lowest of which are balls and the middle one a diamond.
- By night, three all round lights in a vertical line the highest and lowest of which are red and the middle one white.

London VTS will broadcast requests for vessels to “proceed with caution” or “proceed at slow speed”, as described in Permanent Notices to Mariners 4 of 2014 as required by the works. International Code Flags “Romeo Yankee” will be displayed when this is in effect.

Further details will be broadcast by London VTS on VHF Channel 14.

18 July 2017

Port of London Authority
London River House, Royal Pier Road,
Gravesend, Kent DA12 2BG

BOB BAKER
CHIEF HARBOUR MASTER



EXPIRY DATE: 31st October 2017
TO RECEIVE FUTURE NOTICES TO MARINERS BY **E-MAIL**,
PLEASE REGISTER VIA OUR WEBSITE www.pla.co.uk
**Telephone calls, VHF radio traffic, CCTV and radar traffic images may
be recorded in the VTS Centres at Gravesend and Woolwich**

