

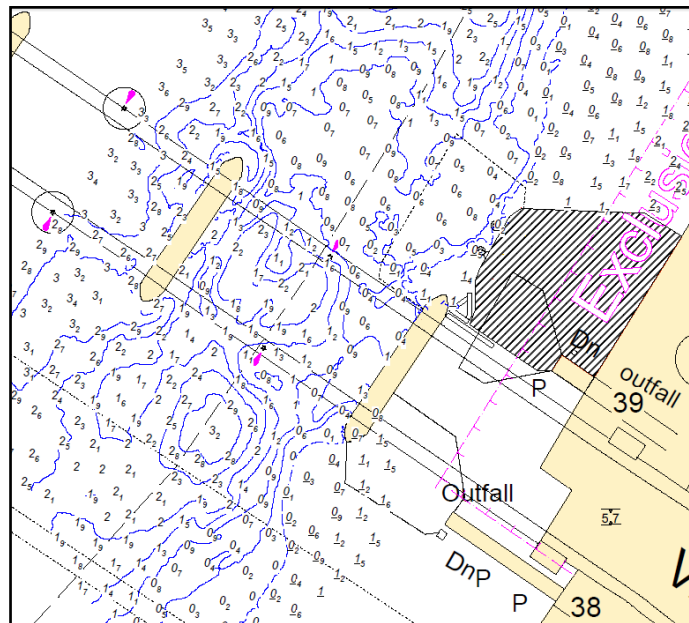
NOTICE TO MARINERS M62 of 2022

NINE ELMS REACH VAUXHALL BRIDGE COMBINED SEWER OVERFLOWS

This notice replaces [M48 of 2022](#), which is hereby withdrawn.

Contractors working on behalf of the Tideway Tunnel Project have completed temporary scour installation and outfall pipework at cofferdam 2 on the Albert Embankment.

From October 2022 onwards, combined sewer overflows (CSOs) will be able to discharge into the river from the cofferdam 2 location (black hatched area) during high rainfall or storm events.



During a discharge event the direction and speed of water flow in the vicinity of the hatched area may be affected and no.4 arch will be closed to navigation for the duration of the discharge.

--- This notice continues on page two ---

30th September 2022

Port of London Authority
London River House, Royal Pier Road,
Gravesend, Kent DA12 2BG

CATHRYN SPAIN
Senior Harbour Master

EXPIRY DATE: 30th April 2024

TO RECEIVE FUTURE NOTICES TO MARINERS BY E-MAIL,
PLEASE REGISTER VIA OUR WEBSITE www.pla.co.uk

Telephone calls, VHF radio traffic, CCTV and radar traffic images may be recorded in the VTS Centres at Gravesend and Woolwich



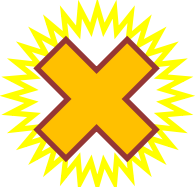

All Current Notices to Mariners can be found here - <http://www.pla.co.uk/ntm>

NOTICE TO MARINERS M62 of 2022

The smart signal light above no. 4 arch of Vauxhall Bridge will be used to indicate when a discharge event is likely to occur, by means of a flashing amber cross. Vessels using no.4 arch should proceed with caution when the CSO warning is in place.

The smart signal light above No. 4 arch of Vauxhall Bridge will continue to be used to indicate the status of the arch while Tideway works continue at the Albert Embankment location.

The smart signal light is remotely controlled by London VTS and the four separate signals with their meanings are described below:

	Closed to navigation for all vessels
<i>Steady red</i>	
	Only " PERMITTED VESSELS " may transit through No. 4 arch. For the purposes of this notice PERMITTED VESSELS are defined as commercial RHIBs, Thames Clippers vessels and Workboats under 13.7 metres LOA. It remains the responsibility of the PERMITTED VESSEL'S master to ensure that the vessel can safely manoeuvre through No. 4 arch and around the marine plant involved in the Albert Embankment Tideway worksite with due regard to the height and the direction of the tide
<i>Steady Amber</i>	
	CSO discharge likely. Vessels to navigate with caution.
<i>Flashing Amber</i>	
	Open to navigation to all vessels subject to limitations of draft and air draft.
<i>Steady Green</i>	

These temporary works are expected to be in place for approximately **18 months**.

30th September 2022

Port of London Authority
London River House, Royal Pier Road,
Gravesend, Kent DA12 2BG

CATHRYN SPAIN
Senior Harbour Master

EXPIRY DATE: 30th April 2024
TO RECEIVE FUTURE NOTICES TO MARINERS BY **E-MAIL**,
PLEASE REGISTER VIA OUR WEBSITE www.pla.co.uk
Telephone calls, VHF radio traffic, CCTV and radar traffic images may be recorded in the VTS Centres at Gravesend and Woolwich
All Current Notices to Mariners can be found here - <http://www.pla.co.uk/ntm>