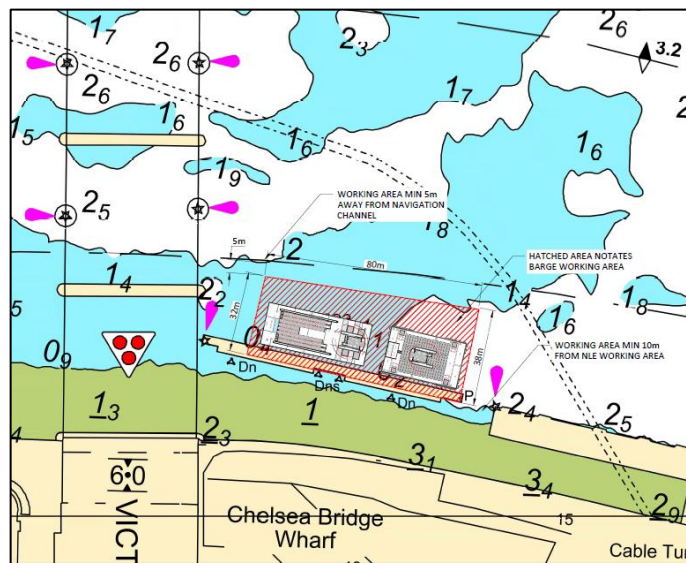


NOTICE TO MARINERS M62 of 2017

NINE ELMS REACH BATTERSEA POWER STATION WORKS

On or about the 1st August 2017 for a period of approximately 8 weeks, the TILMAN and supporting vessels will be moored adjacent to the Battersea Power Station Pier for the installation of the pontoon and brow. The new pontoon will be delivered to site on or about 15th August 2017.

Please see the chartlet below depicting the location of the works and for the limits of the navigation exclusion zones defined by the red boxed area. Only vessels engaged in the works may enter the exclusion zone.



Barges will display the lights and shapes as prescribed in Rule 27 of the International Regulations for Preventing Collisions at Sea 1972 namely:

- By day, three black shapes in a vertical line the highest and lowest of which are balls and the middle one a diamond.
- By night, three all round lights in a vertical line the highest and lowest of which are red and the middle one white.

Vessels are requested to be mindful of their wash when passing the works and to pass at a safe distance.

London VTS will broadcast requests for vessels to “proceed with caution” or “proceed at slow speed”, as described in Permanent Notices to Mariners 4 of 2014 as required by the works. International Code flags “Romeo Yankee” will be displayed when this is in effect.

Further details will be broadcast by London VTS on VHF Channel 14.

17 July 2017

Port of London Authority
London River House, Royal Pier Road,
Gravesend, Kent DA12 2BG

BOB BAKER
CHIEF HARBOUR MASTER



EXPIRY DATE: November 2017
TO RECEIVE FUTURE NOTICES TO MARINERS BY **E-MAIL**,
PLEASE REGISTER VIA OUR WEBSITE www.pla.co.uk
**Telephone calls, VHF radio traffic, CCTV and radar traffic images may
be recorded in the VTS Centres at Gravesend and Woolwich**

