

NOTICE TO MARINERS M61 of 2018

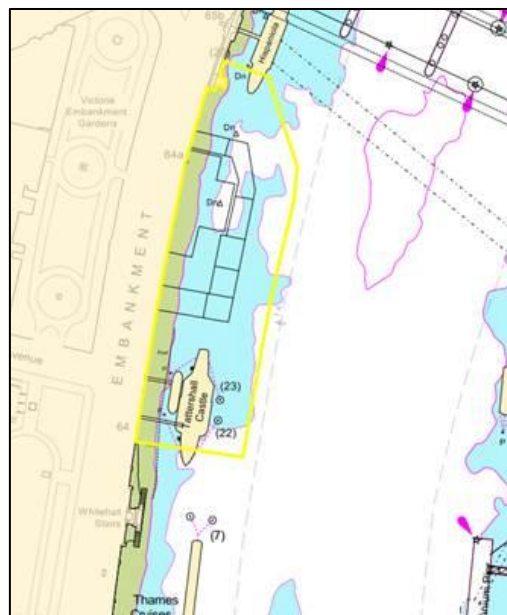
LAMBETH REACH

VICTORIA EMBANKMENT CONSTRUCTION WORKS

Notice to Mariners M28 of 2018 is hereby cancelled.

Mariners are advised that contractors working on the Tideway Tunnel Project will continue works which will involve construction on and behind the twin cofferdam walls between Charing Cross Bridge and the Tattershall Castle on the Victoria Embankment.

Please see the chartlet below depicting the location of the construction works and the cofferdam as completed.



The works will take place using a variety of barges including crane barges, supply and hopper barges, tugs and Multicat vessels are expected to take a further 4 years. The vessels involved will maintain a continuous listening watch on VHF channel 14. At times RY flags may be exhibited in conjunction with “proceed with caution / slow down requests” in VTS broadcasts.

No vessels other than those engaged in the works shall enter the navigation exclusion zone depicted by the yellow line on the chartlet.

Vessels are requested to be mindful of the nature of the works, their wash when passing the works and to pass at a safe distance particularly from any yellow pellet buoys which may be marking anchors, sinkers or other under water obstructions.

At times there may be a requirement to shut no 1 arch of Charing Cross Bridge. Closed arch signs will be exhibited in conjunction with London VTS Broadcasts. At other times no 1 arch will be open with the closed arch signs in place but covered.

Further details will be broadcast by London VTS on VHF Channel 14.

**6th September
2018**

Port of London Authority
London River House, Royal Pier Road,
Gravesend, Kent DA12 2BG

**BOB BAKER
CHIEF HARBOUR MASTER**



EXPIRY DATE: 30th September 2022
TO RECEIVE FUTURE NOTICES TO MARINERS BY **E-MAIL**,
PLEASE REGISTER VIA OUR WEBSITE www.pla.co.uk
**Telephone calls, VHF radio traffic, CCTV and radar traffic images may
be recorded in the VTS Centres at Gravesend and Woolwich**

