

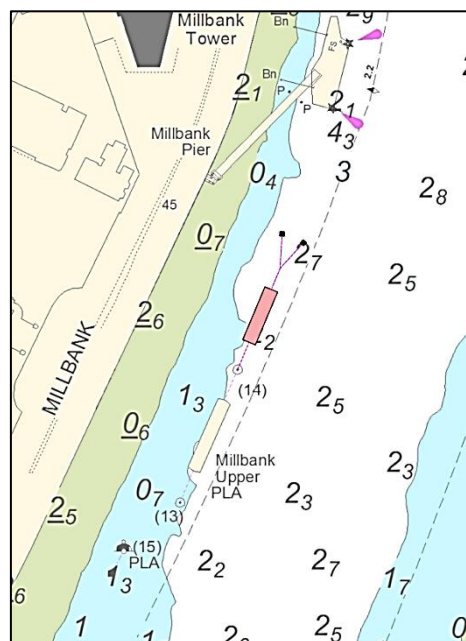
NOTICE TO MARINERS M58 of 2017

LAMBETH REACH

MILLBANK MIDDLE BARGE MOORING

Mariners are advised that on or about the 12th July 2017, a new mooring and collar barge will be installed below the existing Millbank Middle Mooring.

Please see the chartlet below depicting the locations of the works.



The works will involve a DRIFTWOOD vessel undertaking lifting and mooring operations, which are expected to be completed in one day. The DRIFTWOOD vessel will maintain a continuous listening watch on VHF channel 14.

Vessels are requested to be mindful of their wash when passing the works and to pass at a safe distance.

Further details will be broadcast by London VTS on VHF Channel 14.

4 July 2017

Port of London Authority
London River House, Royal Pier Road,
Gravesend, Kent DA12 2BG

BOB BAKER
CHIEF HARBOUR MASTER



EXPIRY DATE: 1st January 2018
TO RECEIVE FUTURE NOTICES TO MARINERS BY **E-MAIL**,
PLEASE REGISTER VIA OUR WEBSITE www.pla.co.uk
**Telephone calls, VHF radio traffic, CCTV and radar traffic images may
be recorded in the VTS Centres at Gravesend and Woolwich**

