

NOTICE TO MARINERS M53 of 2017

BUGSBY'S REACH

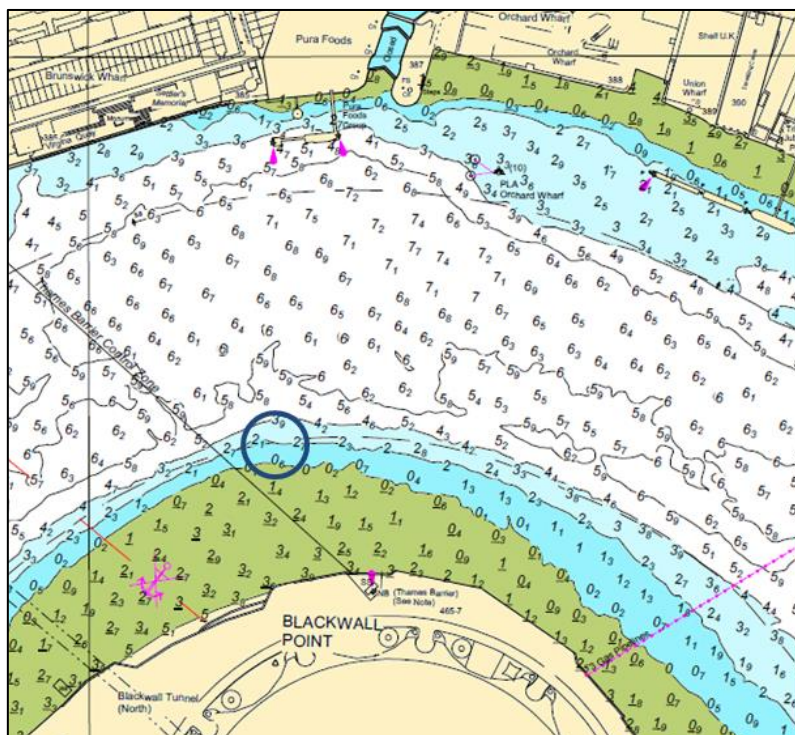
BLACKWALL POINT SPECIAL MARK AND CONTROL MEASURES

To facilitate the safe arrival, departure and berthing of ships over 210m LOA at Greenwich Ship Tier during the below dates, several control measures will be put in place.

Name	Arrival		Departure	
	Date	Time	Date	Time
Viking Star	16 th June 2017	05:45	18 th June 2017	19:30
Viking Sky	30 th June 2017	06:15	2 nd July 2017	20:00
Viking Sea	8 th July 2017	13:00	10 th July 2017	14:15

Temporary Special Mark

A temporary lit yellow special mark (Fl.(2).Y) will be placed on the southern limits of the navigational channel at Blackwall Point from 15th June 2017 until 11th July 2017. Owners and Operators of vessels are reminded to keep clear of this navigational mark whilst it is in place. Please see the attached chartlet.



Navigation Safety Zone

A navigation safety zone will be established around each ship, from 750 metres ahead to 250 metres astern, between Margaretness and Greenwich Ship Tier, as directed by the attending Harbour Service Launch which will be undertaking Local Traffic Control of navigation supported by London VTS.

All vessels navigating in the vicinity of these ships are to pay particular attention to these movements and maintain a continuous watch on VHF Channel 14, following instructions from the attendant Harbour Service Launches displaying blue flashing lights; call sign prefix 'THAMES PATROL'. Further details will be promulgated by **London VTS** on VHF Channel 14 during routine river broadcasts.

12 June 2017

Port of London Authority
London River House, Royal Pier Road,
Gravesend, Kent DA12 2BG

BOB BAKER
CHIEF HARBOUR MASTER



EXPIRY DATE: 15th July 2017
TO RECEIVE FUTURE NOTICES TO MARINERS BY **E-MAIL**,
PLEASE REGISTER VIA OUR WEBSITE www.pla.co.uk
**Telephone calls, VHF radio traffic, CCTV and radar traffic images may
be recorded in the VTS Centres at Gravesend and Woolwich**

