

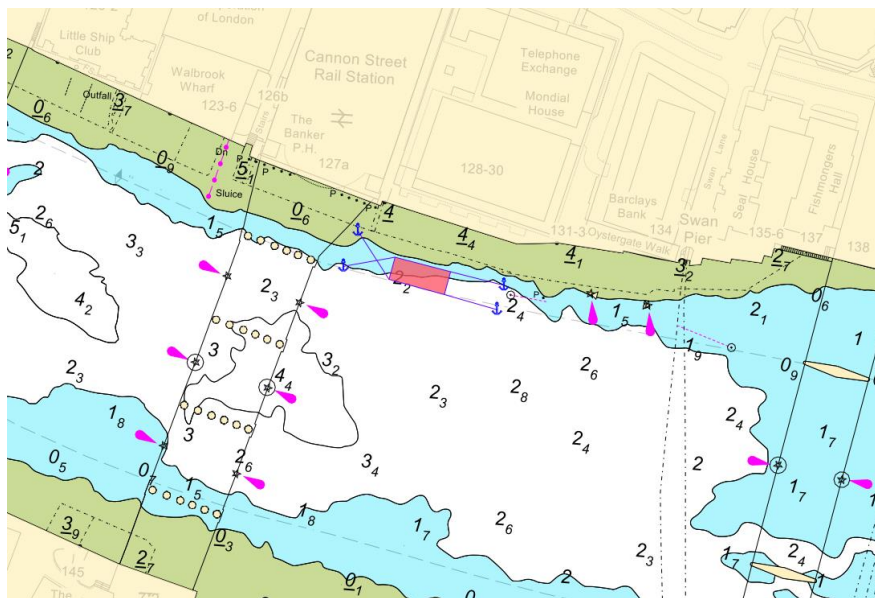
NOTICE TO MARINERS M44 of 2018

KINGS REACH

CANNON STREET RAILWAY BRIDGE

ARCH CLOSURE

Contractors will be conducting camp shed remediation works at Watermark Place, immediately downstream of Cannon Street Railway Bridge, from **Monday 23rd July 2018** for approximately 16 weeks. In order to accommodate these works, the Crane Barge GPS DEVON will be moored immediately below No.1 arch of Cannon Street Railway Bridge (see below chartlet), which will be closed for the duration of the works.



Arches closed to navigation will be marked in accordance with the Port of London Authority Thames Byelaws 2012 namely:

- By day, three red discs 0.6 metres in diameter at the points of an equilateral triangle with the apex downwards and the base horizontal
- By night, three red lights in similar positions to the discs displayed by day

Vessels navigating in the vicinity of the works are to do so with particular caution and due regard to the works taking place.

London VTS will broadcast requests for vessels to “proceed with caution” or “proceed at slow speed”, as described in the Permanent Notices to Mariners 4 of 2014, as required by the works. International Code flags “Romeo Yankee” will be displayed when this is in effect.

Further details will be broadcast by **London VTS** on **VHF Channel 14**.

03rd July 2018

Port of London Authority
London River House, Royal Pier Road,
Gravesend, Kent DA12 2BG

BOB BAKER
CHIEF HARBOUR MASTER



EXPIRY DATE: 30th October 2018
TO RECEIVE FUTURE NOTICES TO MARINERS BY **E-MAIL**,
PLEASE REGISTER VIA OUR WEBSITE www.pla.co.uk
**Telephone calls, VHF radio traffic, CCTV and radar traffic images may
be recorded in the VTS Centres at Gravesend and Woolwich**

