

NOTICE TO MARINERS M43 of 2018

APP STAND UP PADDLEBOARD WORLD CHAMPIONSHIP RACE

BATTERSEA REACH TO LAMBETH REACH

SATURDAY 7TH JULY 2018

LOCAL TRAFFIC CONTROL

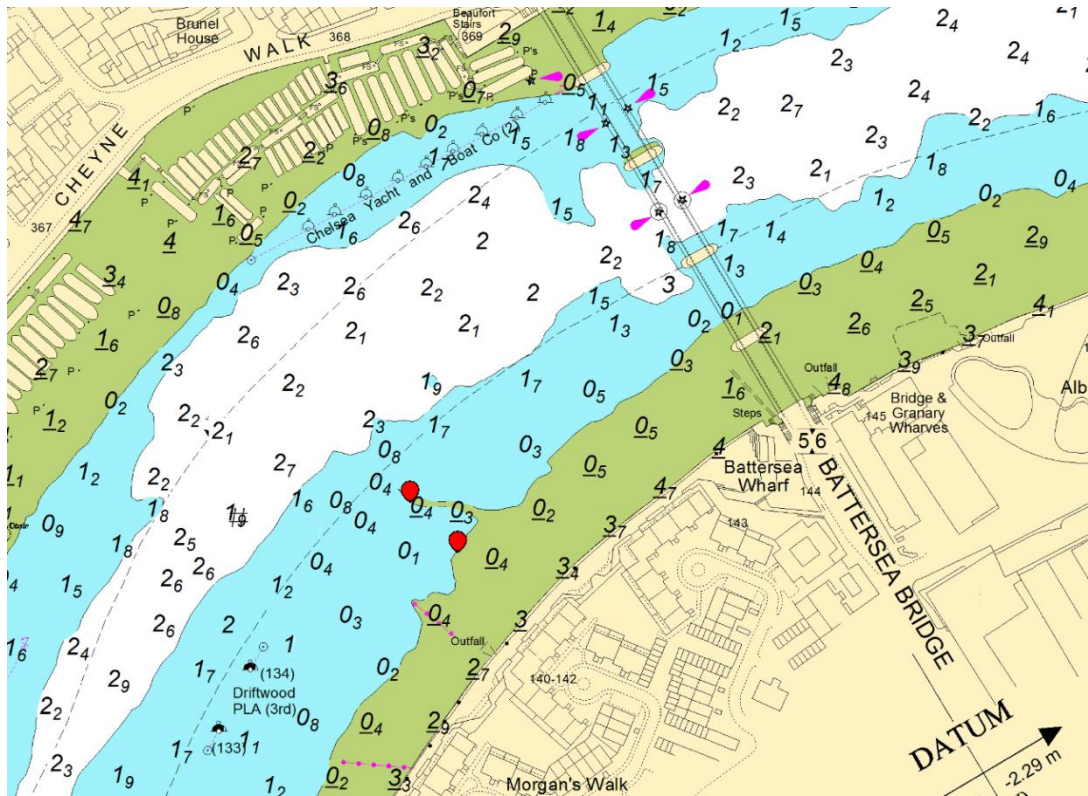
On Saturday 7th July 2018 APP World Tour will be hosting the Stand Up Paddleboard (SUP) World Championship between Battersea Bridge and Westminster Bridge. There will be 50 participants taking part in this event.

Preparations for the race will commence at 06:15, which includes installing four inflatable floats. These will be positioned in the vicinity of Battersea Bridge, Nine Elms Reach and Westminster Bridge, see attached chartlets for further details.

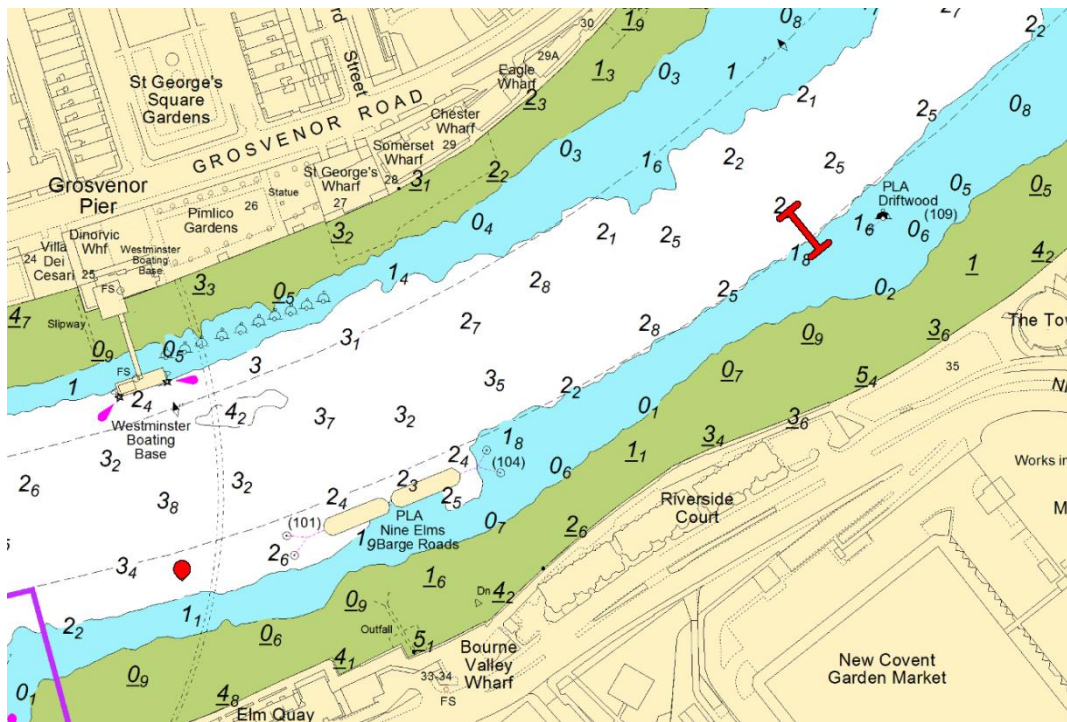
SUP's will launch at St. Mary's Church Battersea Drawdock from 08:00, with the race commencing at 09:00 from Battersea Bridge. Competitors will maintain starboard hand navigation at all times and will be supported by 4 safety boats. The race will finish at Westminster Bridge and SUP's will vacate at County Hall Steps by 10:00. On completion of the race floats will be recovered and removed from the Thames by 12:00.

Local Traffic Control will be in force throughout the area from 08:30 until 10:00 by attending Harbour Service Launches. All vessel's navigating between Battersea Rail Bridge and Charing Cross Rail Bridge are to pay particular attention to this event and maintain a continuous watch on VHF Channel 14, following instructions from the attending Harbour Service Launch; call sign prefix 'THAMES PATROL'.

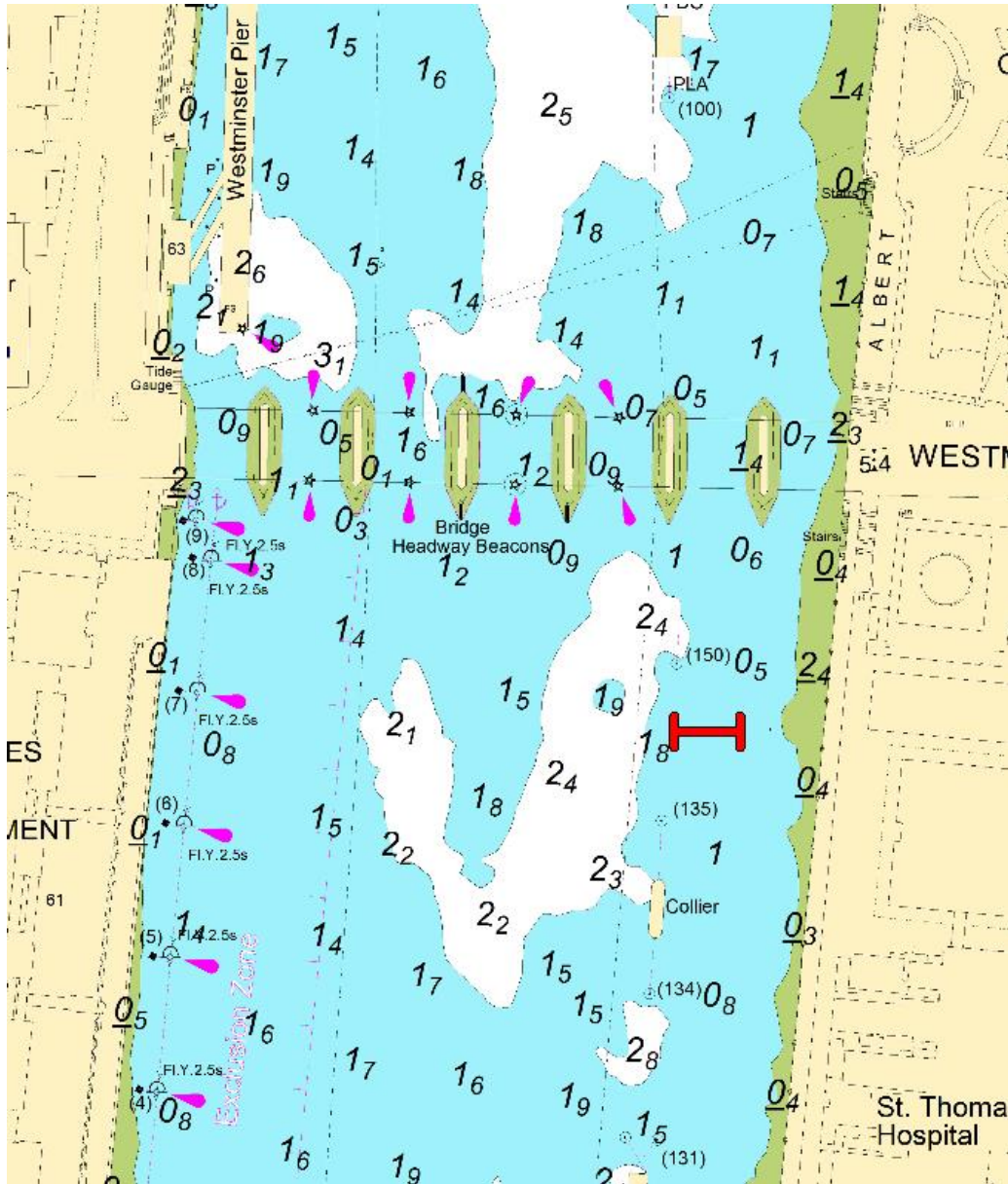
Further details will be broadcast by London VTS on VHF Channel 14.



Battersea Bridge



Nine Elms Reach



Westminster Bridge

29th June 2018

Port of London Authority
 London River House, Royal Pier Road,
 Gravesend, Kent DA12 2BG

BOB BAKER
CHIEF HARBOUR MASTER



EXPIRY DATE: 09th July 2018
 TO RECEIVE FUTURE NOTICES TO MARINERS BY **E-MAIL**,
 PLEASE REGISTER VIA OUR WEBSITE www.pla.co.uk
**Telephone calls, VHF radio traffic, CCTV and radar traffic images may
 be recorded in the VTS Centres at Gravesend and Woolwich**

