

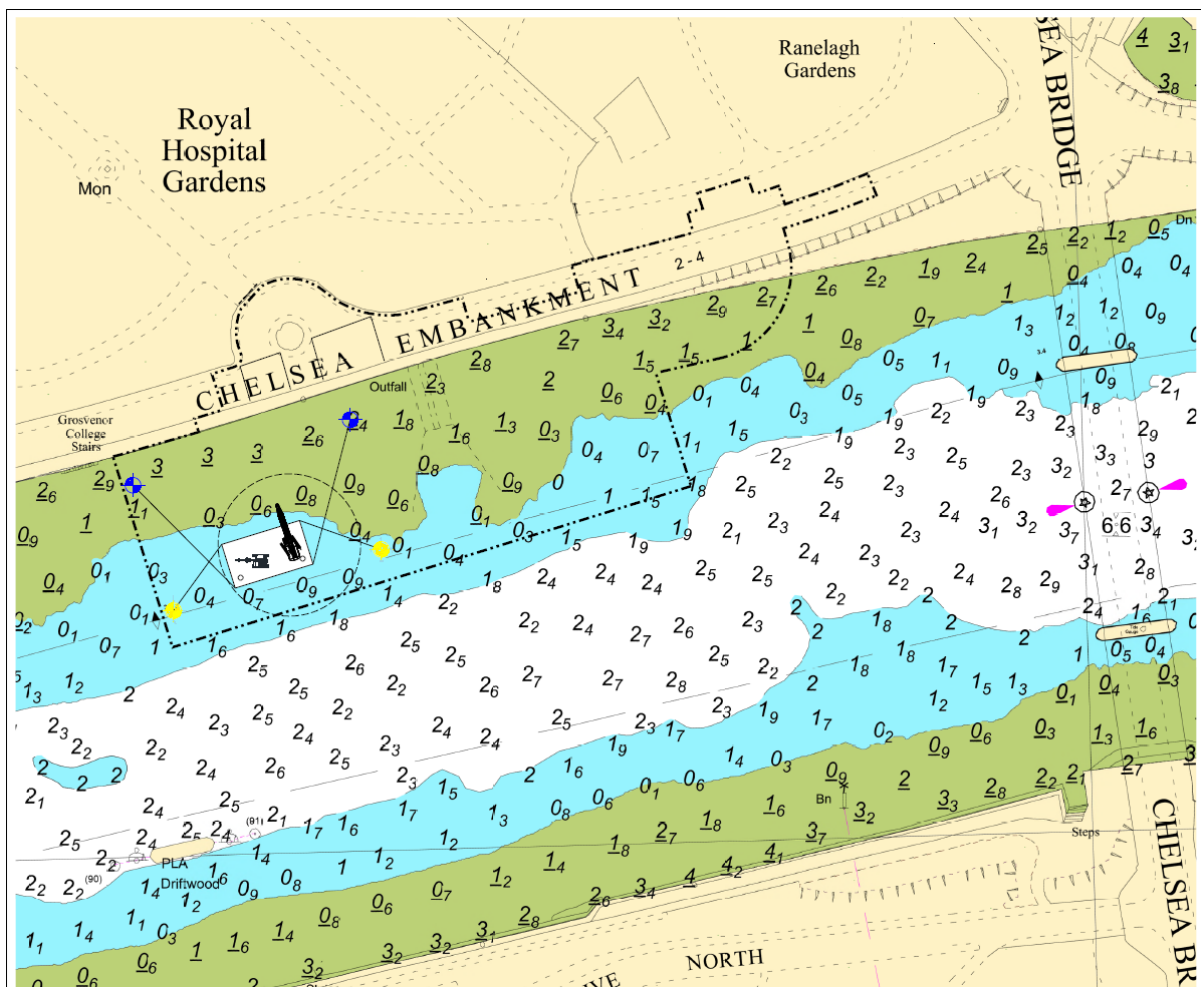
## NOTICE TO MARINERS M41 of 2017

### CHELSEA REACH CHELSEA EMBANKMENT TRIAL PITS

Mariners are advised that on or about the 30th May 2017 for a duration of approximately 6 days, contractors working on the Tideway Tunnel Project will dig trial pits on the foreshore at Chelsea Embankment.

The Crane Barge DEVON will be on site throughout the duration of the works. A safety vessel GPS ILLYRIA will also be in attendance during working hours 0600-1800 Monday to Friday.

Please see the chartlet below depicting the location of the construction works.



The Crane Barge DEVON will display the lights and shapes as prescribed in Rule 27 of the International Regulations for Preventing Collisions at Sea 1972 namely:

- By day, three black shapes in a vertical line the highest and lowest of which are balls and the middle one a diamond.
- By night, three all round lights in a vertical line the highest and lowest of which are red and the middle one white.

The anchors towards the channel edge will be marked by yellow unlit pellet buoys.

The works will involve repositioning the crane barge and will also involve the landing and lifting off of a digger/bulldozer to and from the foreshore when accessible. Vessels involved in the works will maintain a listening watch on VHF channel 14.

Vessels are requested to be mindful of the nature of the works, their wash when passing the works and to pass at a safe distance particularly from the yellow pellet buoys.

London VTS will broadcast requests for vessels to “proceed with caution” or “proceed at slow speed”, as described in Permanent Notices to Mariners 4 of 2014 as required by the works particularly when lifting operations are taking place. International Code flags “Romeo Yankee” will be displayed only when this is in effect.

Further details will be broadcast by London VTS on VHF Channel 14.

**15 May 2017**

Port of London Authority  
London River House, Royal Pier Road,  
Gravesend, Kent DA12 2BG

**BOB BAKER**  
**CHIEF HARBOUR MASTER**



EXPIRY DATE: 30<sup>th</sup> June 2017  
TO RECEIVE FUTURE NOTICES TO MARINERS BY **E-MAIL**,  
PLEASE REGISTER VIA OUR WEBSITE [www.pla.co.uk](http://www.pla.co.uk)  
**Telephone calls, VHF radio traffic, CCTV and radar traffic images may  
be recorded in the VTS Centres at Gravesend and Woolwich**

