

NOTICE TO MARINERS M26 of 2017

KINGS REACH TO WANDSWORTH REACH

MARINE WORKS INCLUDING BRIDGE ARCH CLOSURES

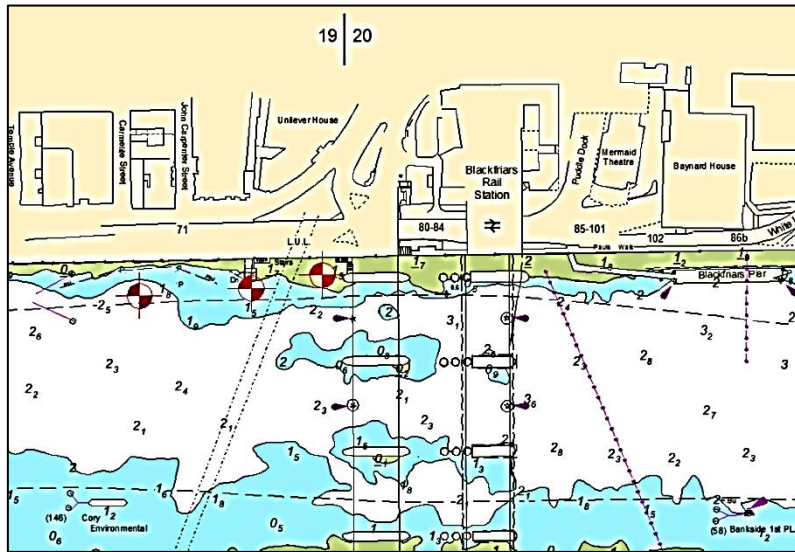
Mariners are advised that on or about 26th March until approximately the 18th May 2017 contractors working on the Tideway Tunnel Project will place a jack up barge at various locations between Blackfriars Bridge and Wandsworth Bridge. Service barges and vessels will also attend alongside the jack up barge. For details of specific locations and programmed durations please see the chartlets below.

No 1 and 2 arches of Blackfriars Road and Rail Bridges will be closed from 31st March to 9th of April and No 5 arch of Vauxhall Bridge from 1st to 7th of May.

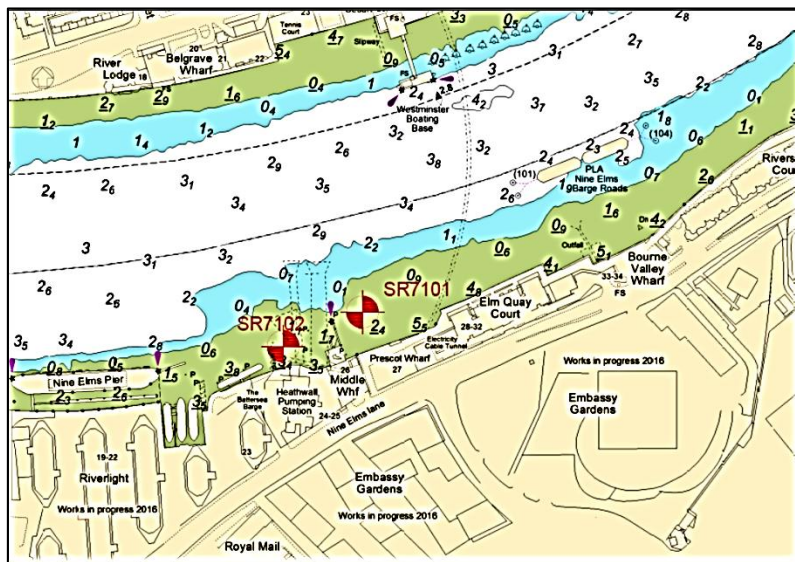
Arches closed to navigation will be marked in accordance with the Port of London Authority River Byelaws 2012 (as amended) namely:

- By day, three red discs 0.6 metres in diameter at the points of an equilateral triangle with the apex downwards and the base horizontal
- By night, three red lights in similar positions to the discs displayed by day.

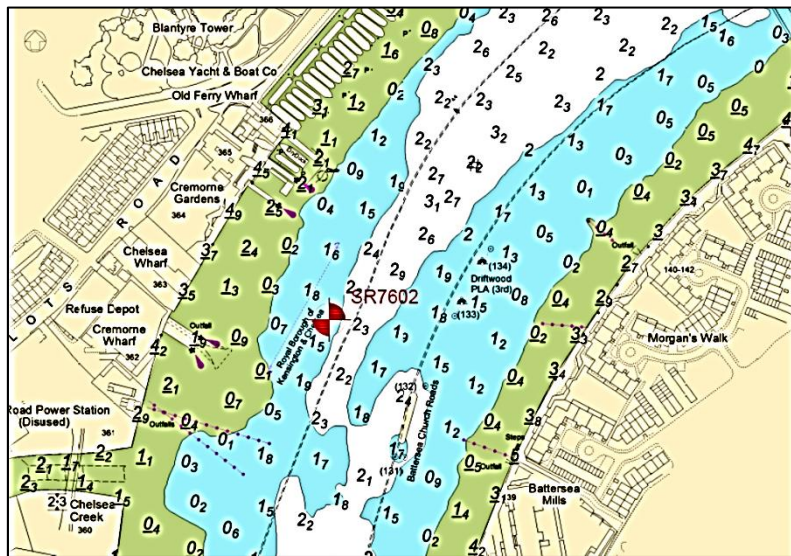
Blackfriars location 27th March – 9th April Bridge 1 & 2 arches closed 31st March - 9th April



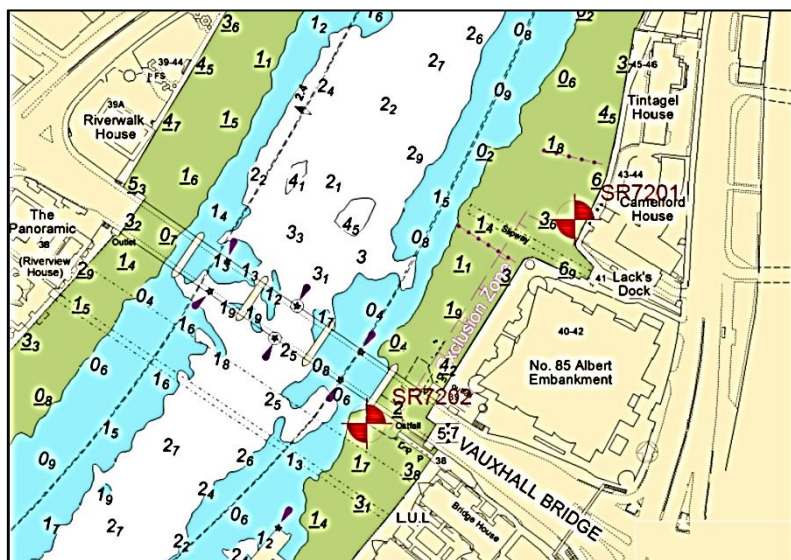
Heathwall Pumping Station and Middle Wharf 10-13 April and 18-23 April



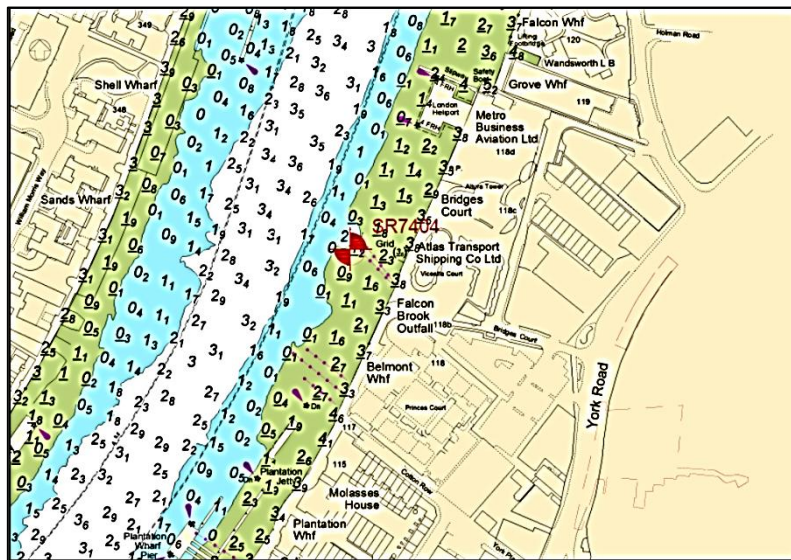
Cremorne Wharf 14-17 April



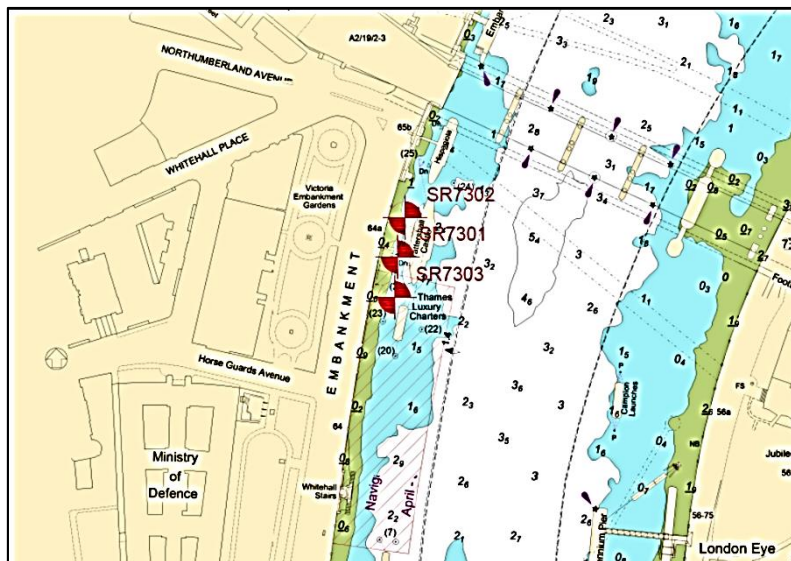
Albert Embankment 24 April - 7 May No 1 arch Vauxhall Bridge closed 1-7 May



Belmont Wharf 8-11 May



Victoria Embankment 12-17 May



The jack up barge SKATE 2D will be towed to the first western most Blackfriars location by the SHAKEDOG from Coin Street moorings and when on location will be attended by the SEADOG. Except for the Cremorne Wharf location which is 24 hour working, working hours will be 8am to 6pm Monday to Saturday.

SKATE 2D will display the lights and shapes as prescribed in Rule 27 of the International Regulations for Preventing Collisions at Sea 1972 namely:

- By day, three black shapes in a vertical line the highest and lowest of which are balls and the middle one a diamond.
- By night, three all round lights in a vertical line the highest and lowest of which are red and the middle one white.

Vessels are requested to be mindful of their wash when passing the works when attending vessels are present.

SHAKEDOG AND SEADOG will maintain a watch on VHF channel 14.

Further details will be broadcast by London VTS on VHF Channel 14.

13 March 2017

Port of London Authority
London River House, Royal Pier Road,
Gravesend, Kent DA12 2BG

BOB BAKER
CHIEF HARBOUR MASTER



EXPIRY DATE: 31st May 2017
TO RECEIVE FUTURE NOTICES TO MARINERS BY **E-MAIL**,
PLEASE REGISTER VIA OUR WEBSITE www.pla.co.uk
**Telephone calls, VHF radio traffic, CCTV and radar traffic images may
be recorded in the VTS Centres at Gravesend and Woolwich**

